

**kala**  
feminine forever & ever...  
**Jaipuri**



5006



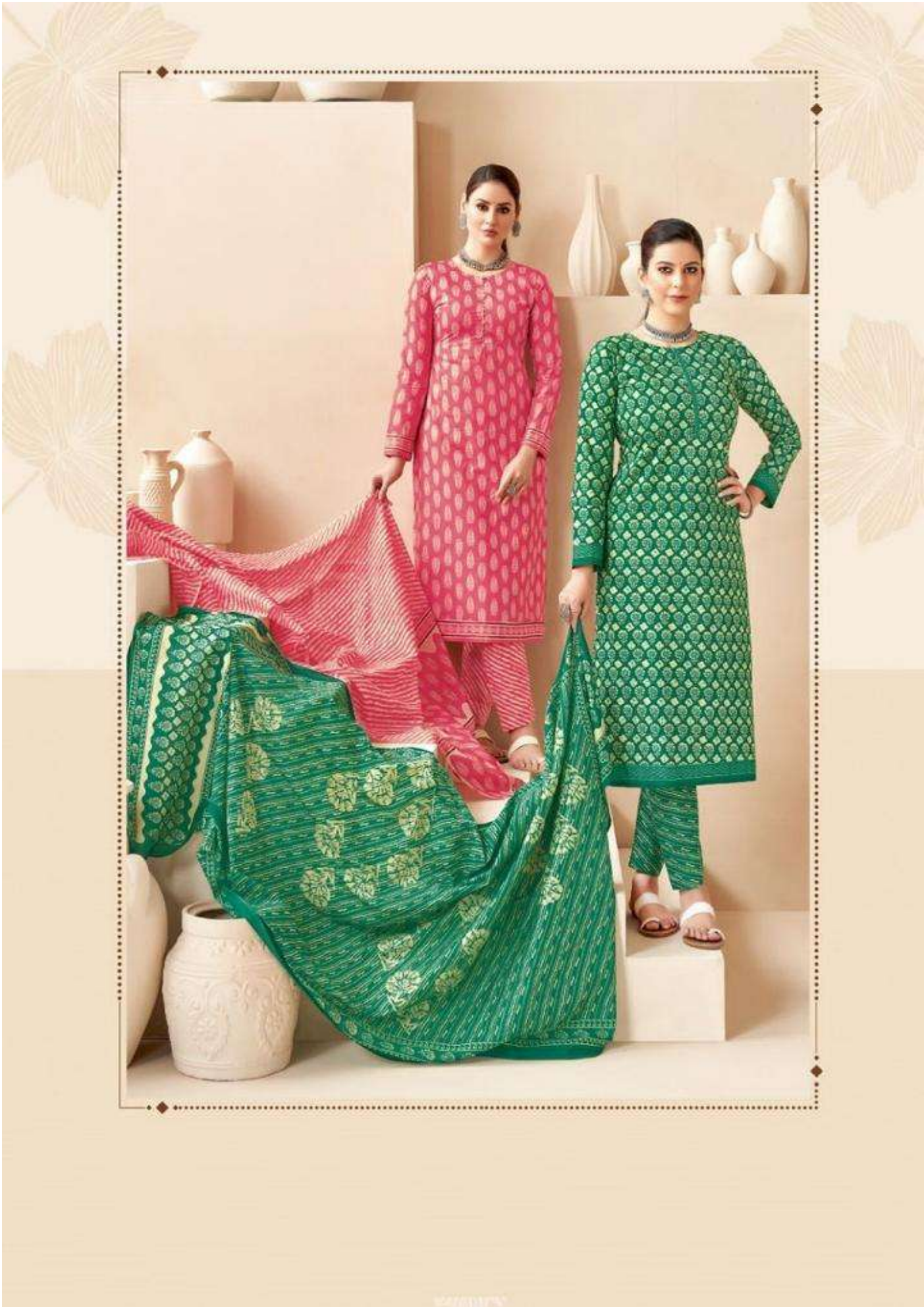
A woman is the central figure, wearing a long-sleeved, knee-length kurta with a repeating pattern of small red and brown motifs on a light beige background. The kurta has a red vertical stripe down the center and a matching red border at the hem. She is also wearing a red and beige patterned dupatta with a wide border and a matching pair of leggings. Her accessories include a dark necklace, earrings, and a ring. She is standing in a room with white walls and several white ceramic pots and vases on shelves and the floor. The lighting is soft and warm.

**kala**  
feminine forever & ever...

**Jaipuri**

5012







# Jaipuri

Vol-3

**kala**  
feminine forever & ever...



5001



5002



5003



5004



5005



5006



5007



5008



5009



5010

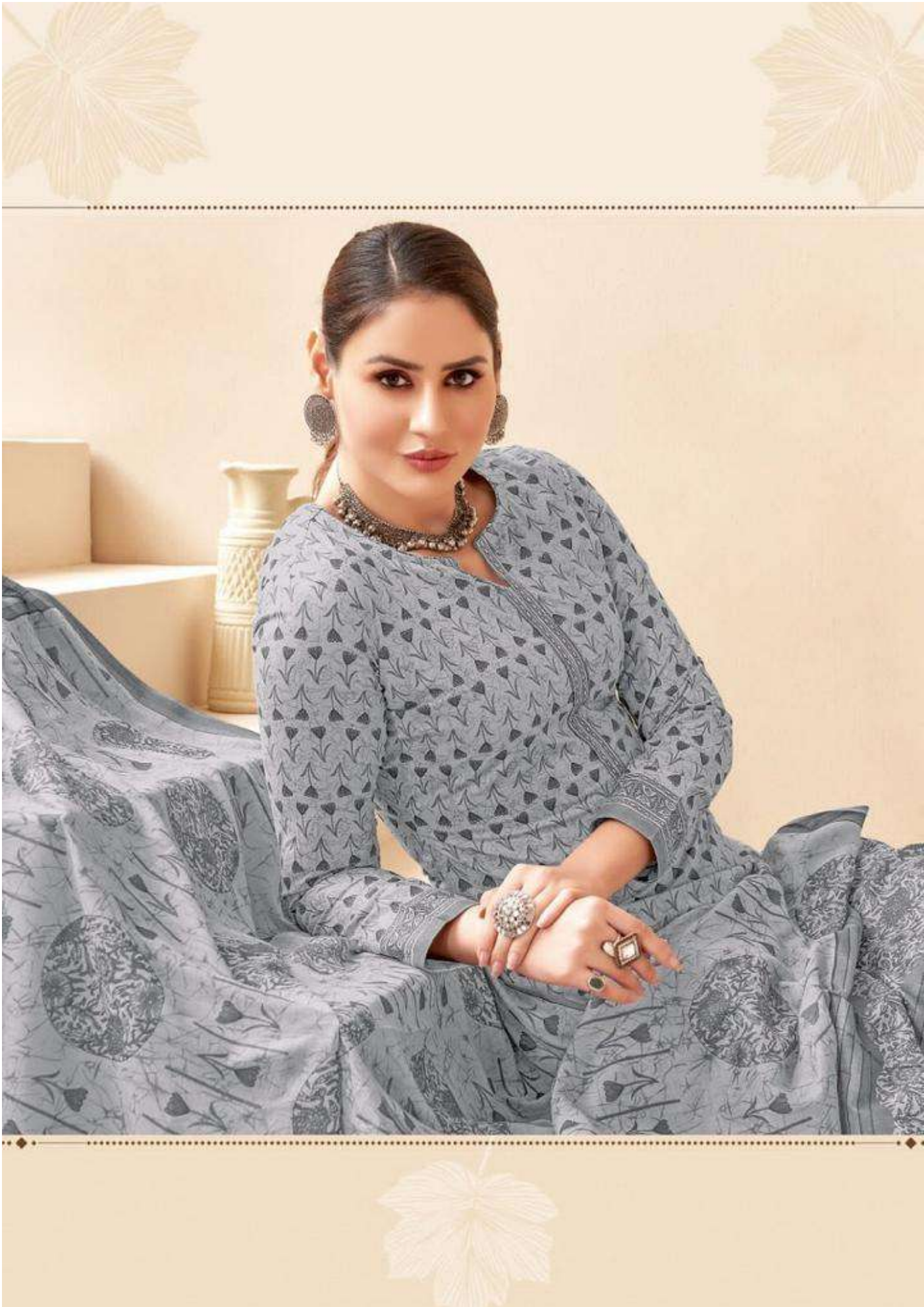


5011



5012





**kala**  
feminine forever & ever...  
**Jaipuri**



5001







**kala**  
feminine forever & ever...

**Jaipuri**



5007

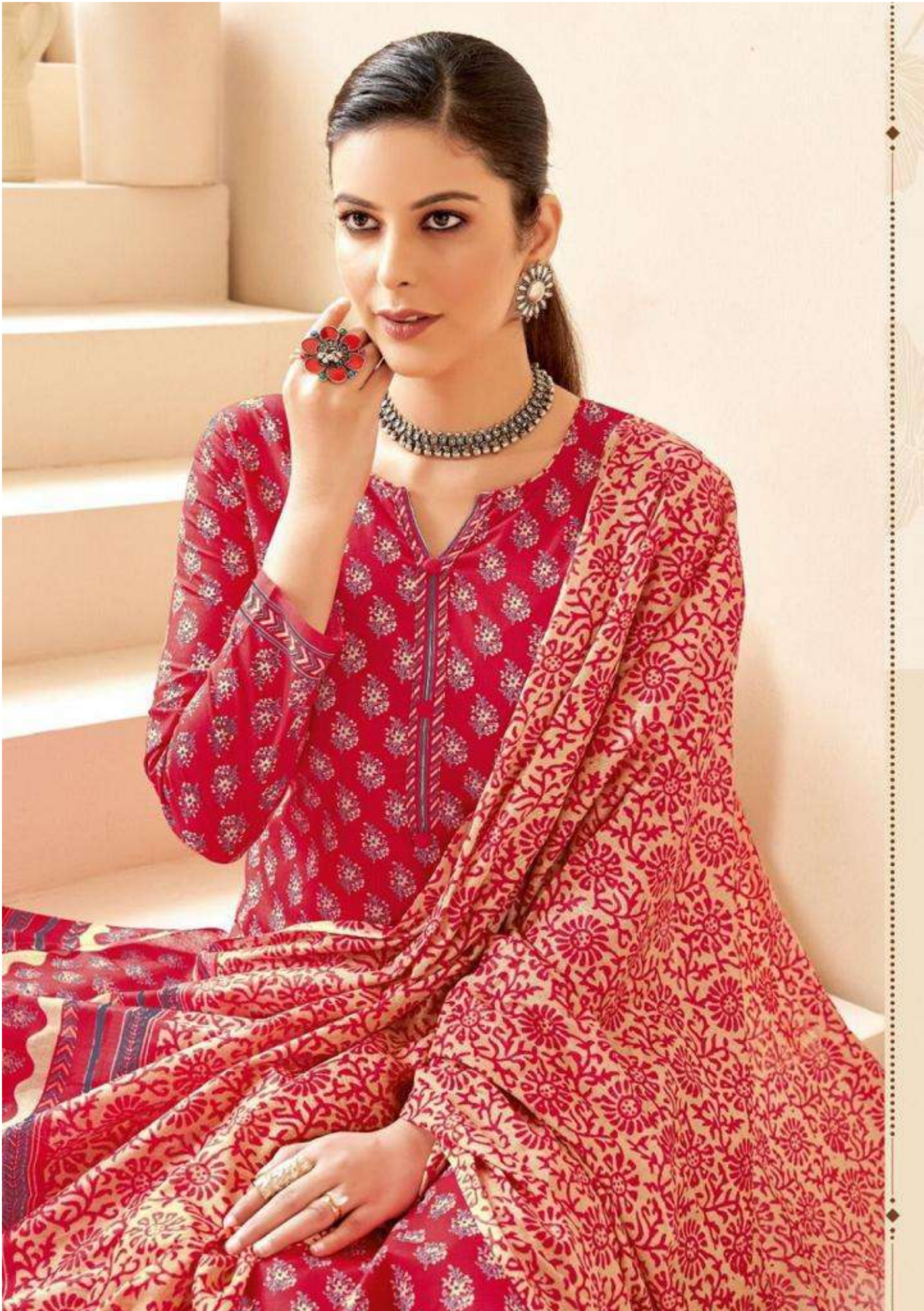


**kala**  
feminine forever & ever...  
**Jaipuri**



5004







**kala**  
feminine forever & ever...  
**Jaipuri**



5011



**kala**  
feminine forever & ever...  
**Jaipuri**



5002



**kala**  
feminine forever & ever...

**Jaipuri**

5008

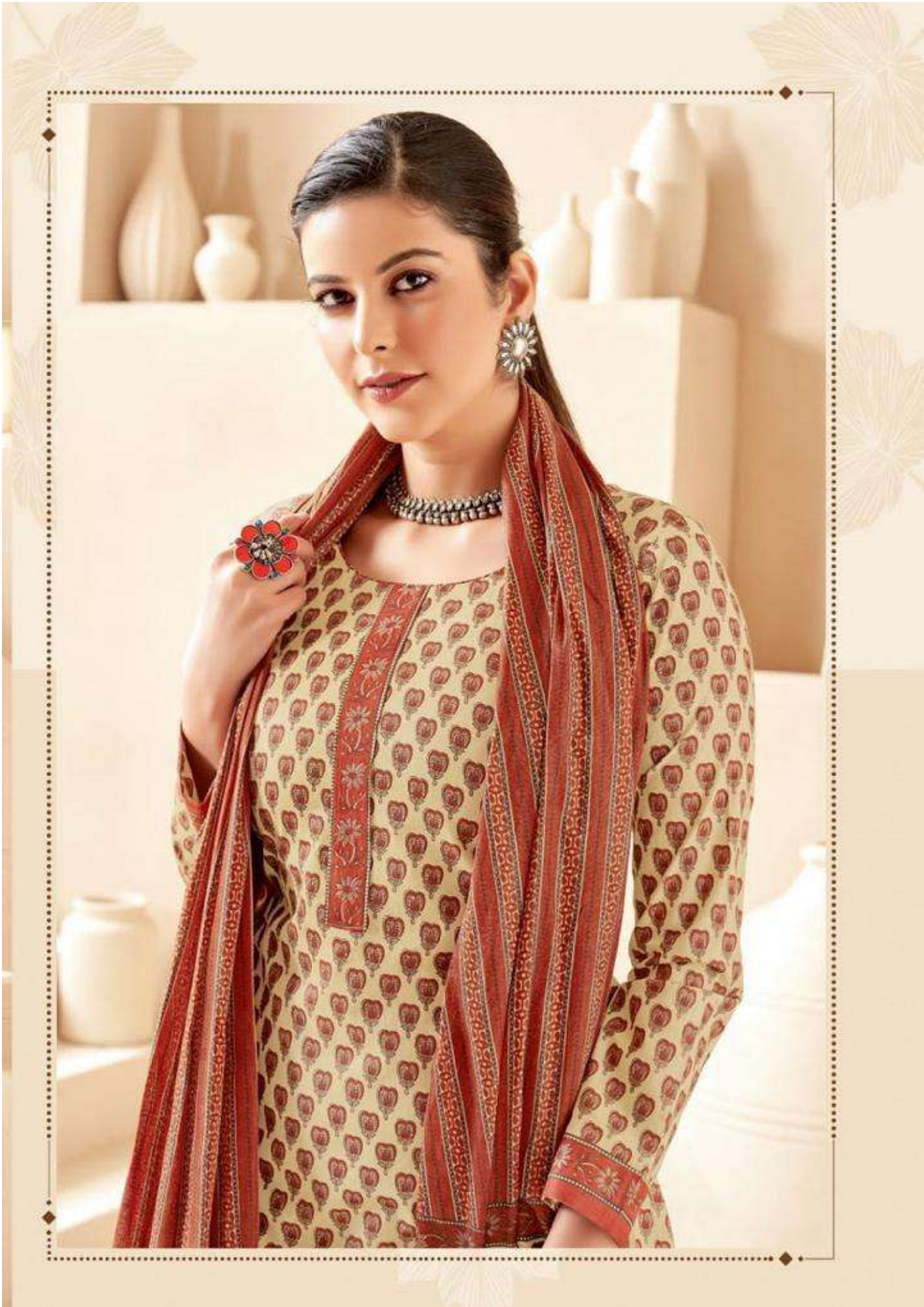


**kala**  
feminine forever & ever...  
**Jaipuri**



5003









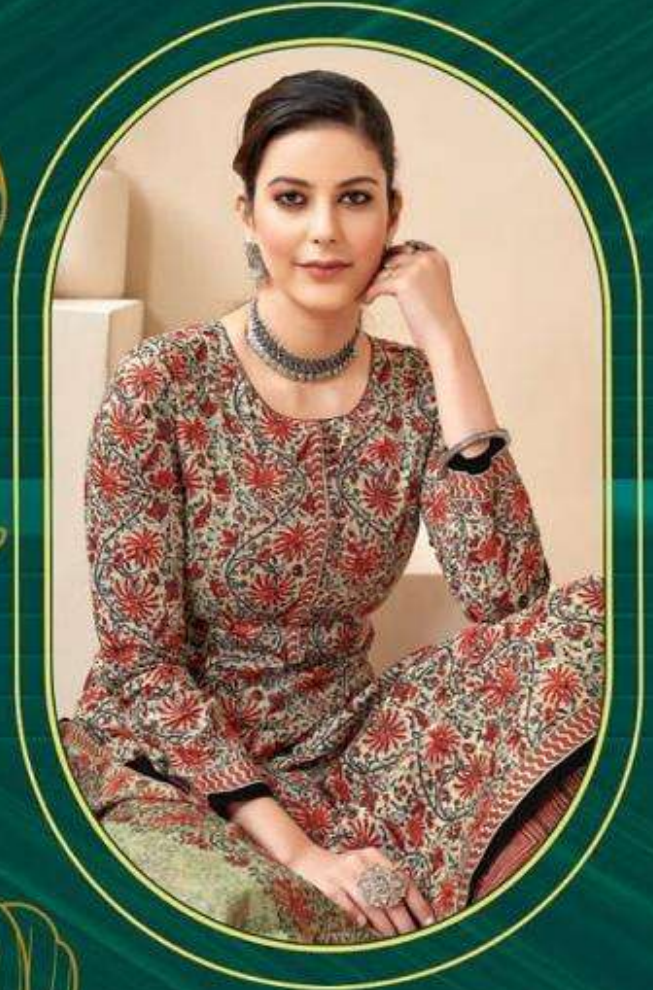








**kala**<sup>®</sup>  
feminine forever & ever...



**Jaipuri**  
Vol-3









**kala**  
feminine forever & ever...  
**Jaipuri**



5005



**kala**  
feminine forever & ever...

**Jaipuri**



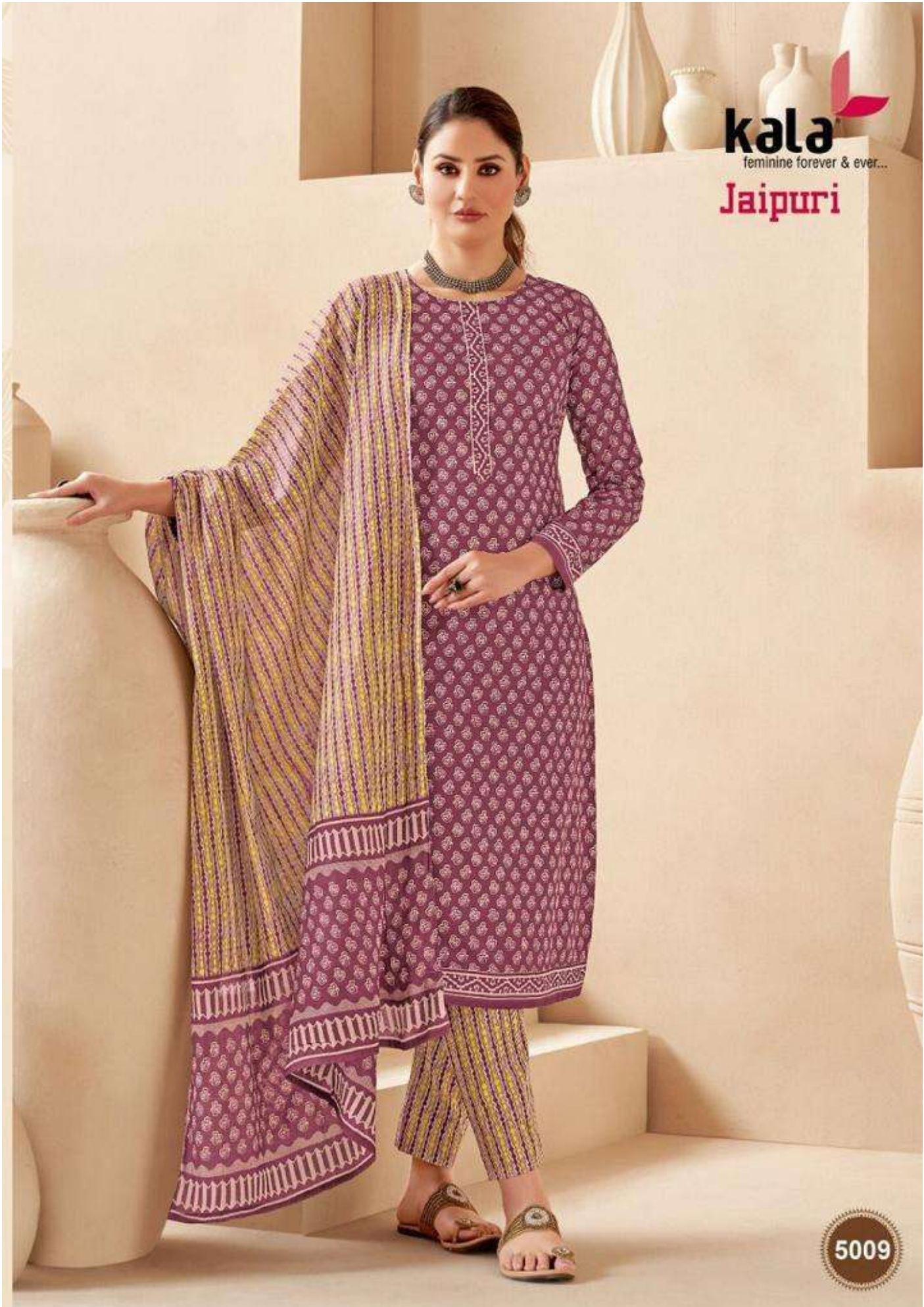
5010



**kala**  
feminine forever & ever...

**Jaipuri**

5009

















**kala**  
feminine forever & ever...  
**Jaipuri**



5006







**kala**  
feminine forever & ever...  
**Jaipuri**



5006



