

KIMORA®

ZARI



ZARI

: TOP :

Pure organza with scalloped zari embroidery on hemline,
sleeves and buttis all over
(with modale silk inner)

: DUPATTA :

Pure shaded organza with scalloped zari embroidery
border and buttis all over

: BOTTOM :

Modale silk

.. DESIGN NO ..

2131 TO 2138

Heer

KIMORA®

www.kimora.in

KIMORO



ZARI



KIMONO

ZARI





KIMORO
ZARI



KIMONO



ZARI

KIMORA- 43**~ ZARI ~****Price List**

Sr.No	Design No	Rate
1	2131	2490
2	2132	2490
3	2133	2490
4	2134	2490
5	2135	2490
6	2136	2490
7	2137	2490
8	2138	2490
Total		19920

KIMORO



ZARI



KIMONO



ZARI

KIMORA



2 1 3 8



KIMORA



2 1 3 6



KIMORA



2 1 3 7

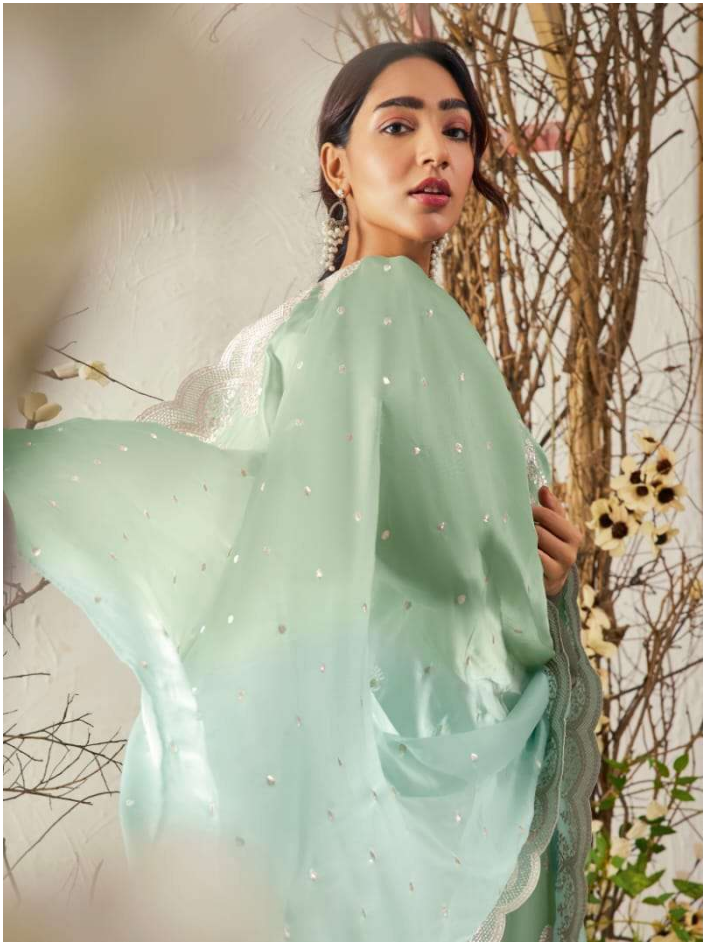


KIMORA



2 1 3 2





KIMONO



ZARI



KIMORA



2 1 3 1



KIMORA



2 1 3 4



KIMORO





ZARI

KIMORA®

ZARI

