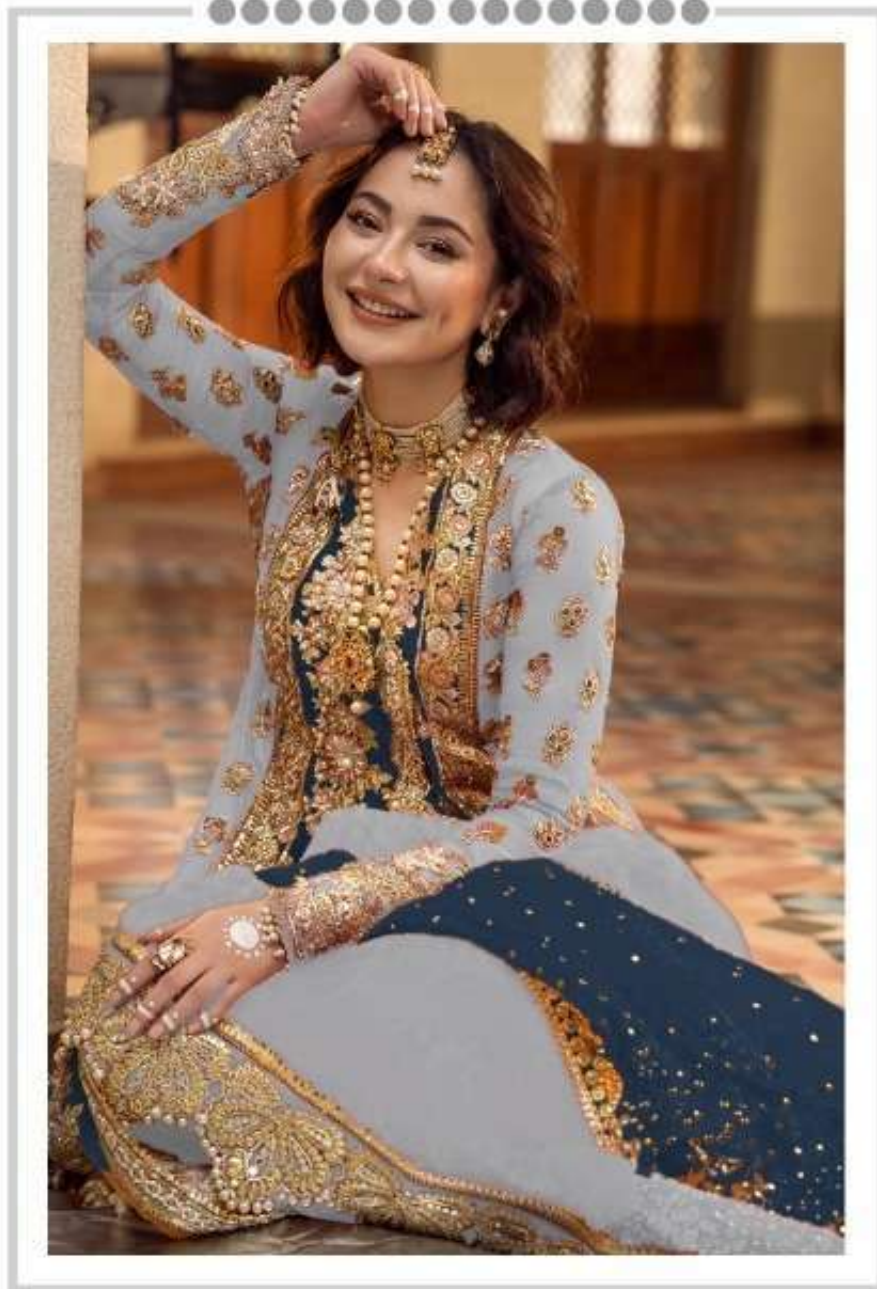


  
548-NX



  
548-NX







#R-548-E



TOP- ORGENZA WORK WITH EMBROIDERY  
BOTTOM-DULL SANTOON  
DUPATTA - ORGENZA WORK WITH EMBROIDERY

- Ⓟ DRY CLEAN ONLY.
- ⓧ DO NOT USE ANY BLEACH OR STAIN REMOVING CHEMICAL.
- ☎ IRON THE FABRIC AT MODERATE TEMPERATURE.







#R-548-F



TOP- ORGENZA WORK WITH EMBROIDERY  
BOTTOM-DULL SANTOON  
DUPATTA - ORGENZA WORK WITH EMBROIDERY

Ⓟ DRY CLEAN ONLY.  
ⓧ DO NOT USE ANY BLEACH OR STAIN REMOVING CHEMICAL.  
Ⓛ IRON THE FABRIC AT MODERATE TEMPERATURE.





#R-548-G



TOP- ORGENZA WORK WITH EMBROIDERY  
BOTTOM-DULL SANTOON  
DUPATTA - ORGENZA WORK WITH EMBROIDERY

- Ⓟ DRY CLEAN ONLY.
- ⓧ DO NOT USE ANY BLEACH OR STAIN REMOVING CHEMICAL.
- ☎ IRON THE FABRIC AT MODERATE TEMPERATURE.







#R-548-H



TOP- ORGENZA WORK WITH EMBROIDERY  
BOTTOM-DULL SANTOON  
DUPATTA - ORGENZA WORK WITH EMBROIDERY

Ⓟ DRY CLEAN ONLY.  
ⓧ DO NOT USE ANY BLEACH OR STAIN REMOVING CHEMICAL.  
Ⓡ IRON THE FABRIC AT MODERATE TEMPERATURE.

Ramsha®  
548-NX



Ramsha®  
548-NX



#R-548-E



#R-548-F



#R-548-G



#R-548-H