

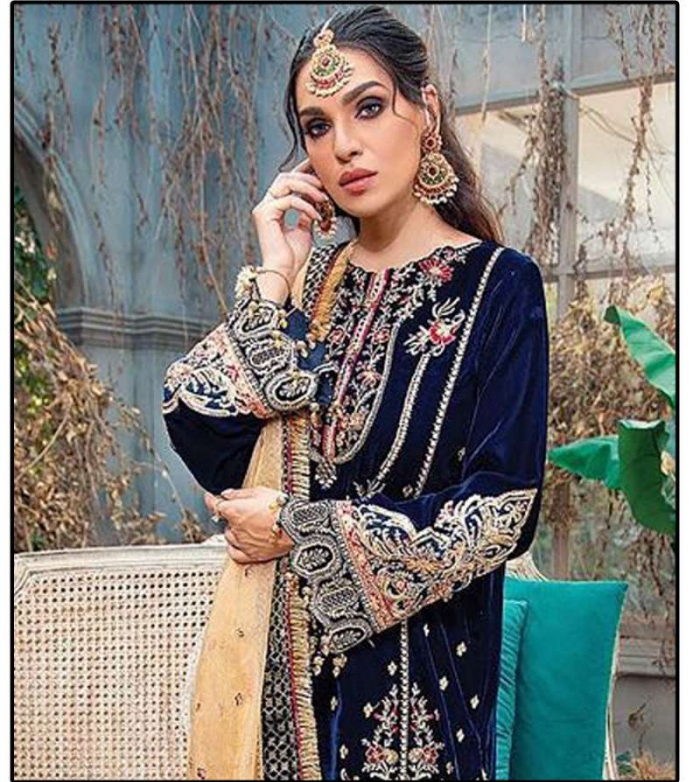


ANAYA VOL-01

VELVET COLLECTION



DS-144



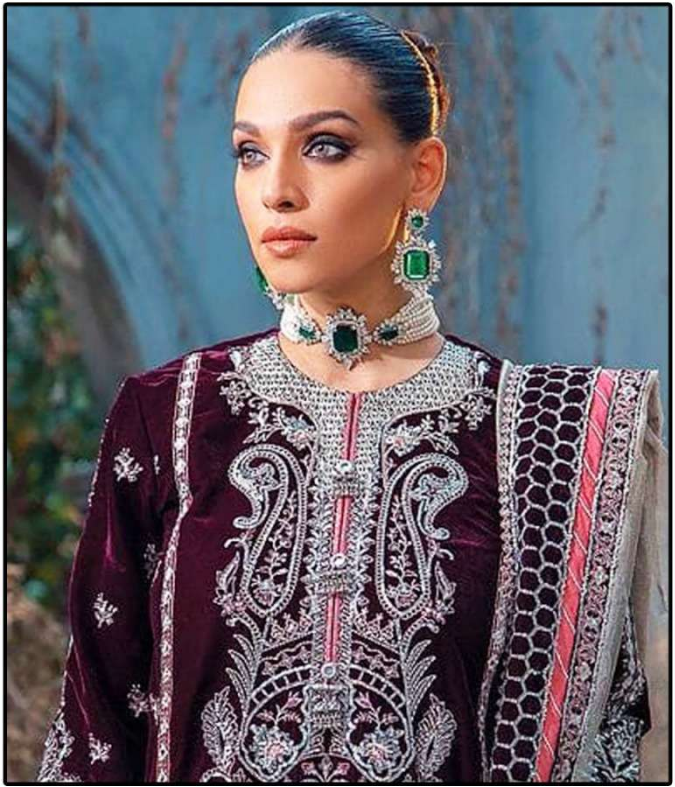
DS-146

VELVET
COLLECTION

WASHING INSTRUCTIONS
 DO NOT USE ANY TYPE OF BLEACH OR CHLORINE-BLEACHING AGENTS
 BEFORE CUTTING OR FINISHING, SHOULD BE WASHED IN WATER
 ALL COMPONENTS SEPARATELY FOR 30 MINUTES
 DO NOT KEEP HETTERED, IN TOUCH WITH LOCKS TO AVOID COP MARKS
 WASH COLOURED AND WHITE FABRICS SEPARATELY
 NEW COLOURED FABRICS SHOULD BE WASHED IN DIRECT SUNLIGHT
 EXTRA LACES, HANGINGS AND ACCESSORIES ARE NOT INCLUDED



Dinsaa
Suits



DS-144

**VELVET
COLLECTION**

WASHING INSTRUCTIONS
 DO NOT USE ANY TYPE OF BLEACH OR CHLORINE BLEACH
 BEFORE CUTTING OR FINISHING, SHOULD BE SOAKED IN WATER
 ALL COMPONENTS SEPARATELY FOR 30 MINUTES
 DO NOT KEEP HANGING IN FOLDERS OR LOCKERS TO AVOID COUP MARKS
 WASH COLOURED AND WHITE FABRICS SEPARATELY
 NEW COLOURED FABRICS SHOULD BE SOAKED IN DIRECT SUNLIGHT
 EXTRA LACES, HANGINGS AND ACCESSORIES ARE NOT INCLUDED



ANAYA VOL-01

VELVET COLLECTION



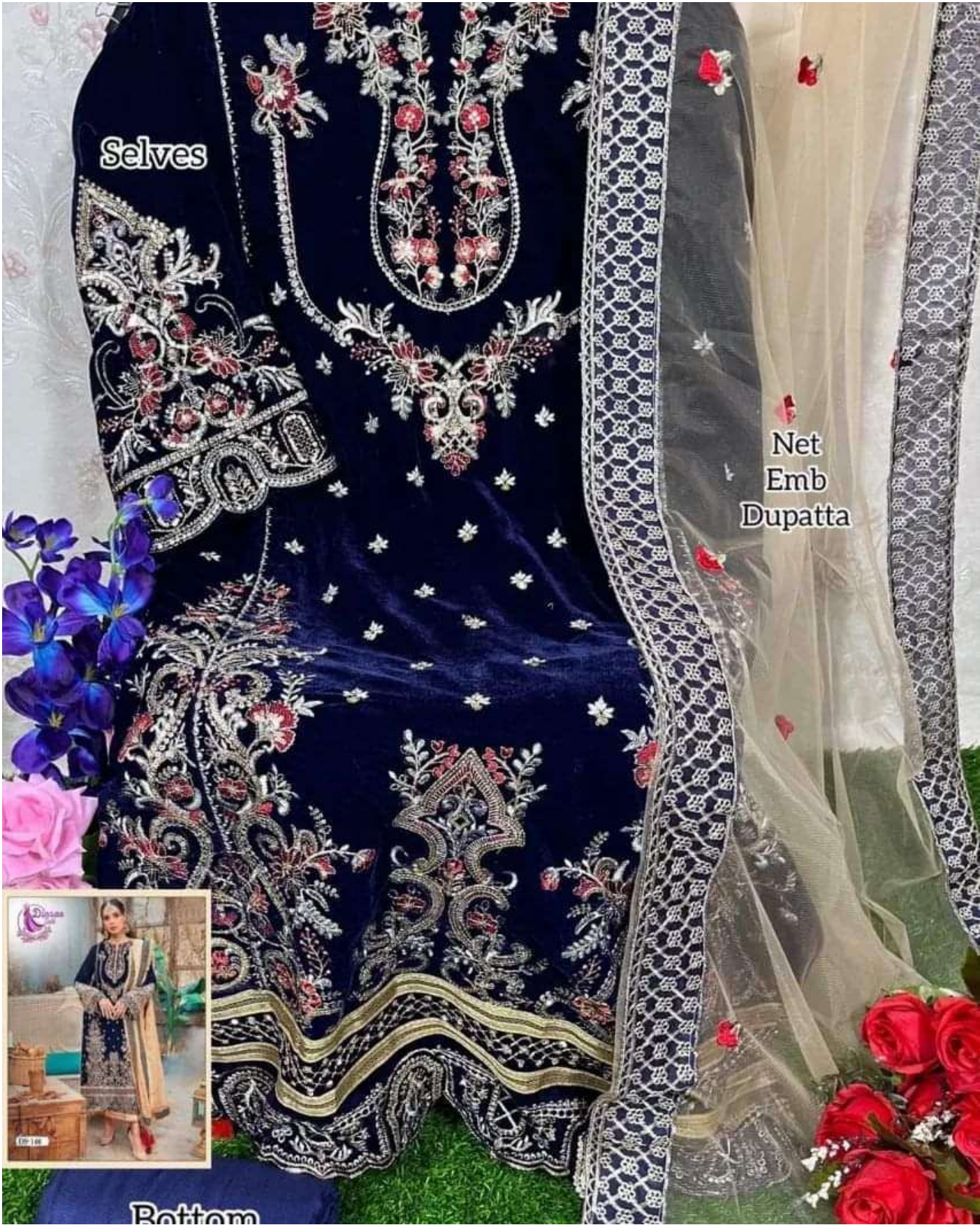
DS-144



DS-145



DS-146



Selves

Net
Emb
Dupatta



Bottom



Selves

Net
Emb
Dupatta

Bottom

Dinsaa
Suits

Selves

Net
Emb
Dupatta



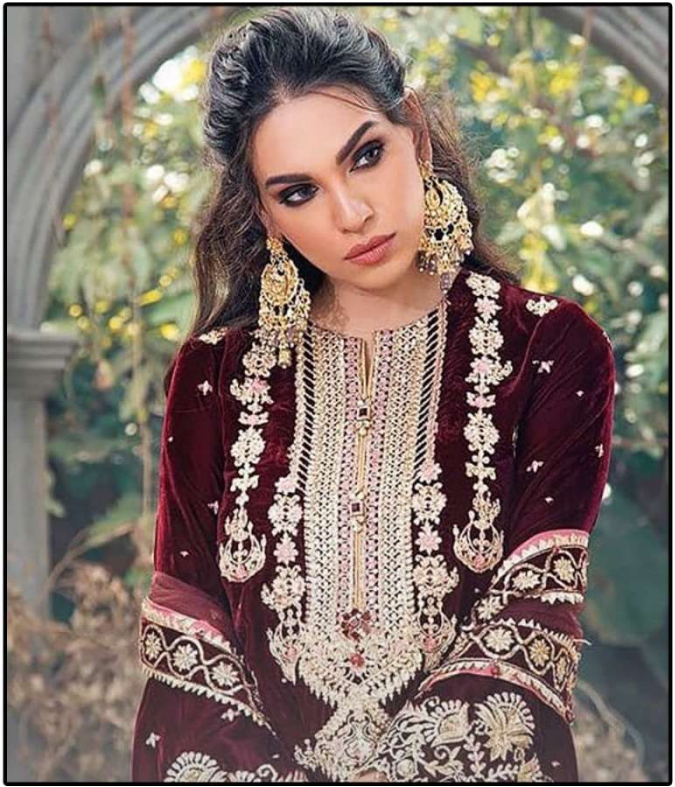
Bottom





ANAYA VOL-01

VELVET COLLECTION



DS-145

VELVET COLLECTION

WASHING INSTRUCTIONS
DO NOT USE ANY TYPE OF BLEACH OR CHLORINE BLEACH
BEFORE CUTTING OR FINISHING, SHOULD BE WASHED IN WATER
ALL COMPONENTS SEPARATELY FOR 5 MINUTES
DO NOT KEEP HANGING IN FOLDERS FROM LOCKER TO AVOID COUP MARKS
WASH COLOURED AND WHITE FABRICS SEPARATELY
IRON COLOURED FABRICS AT 110°C AND WHITE FABRICS AT 150°C
EXTRA LACES, HANGINGS AND ACCESSORIES ARE NOT INCLUDED