

  
**MAHNUR**<sup>TM</sup>  
— FASHION —

**D.NO.26002**



**TOP** - FAUX GEORGATTE WITH EMBROIDERY SEQUENCE  
DAIMOND WORK

**DUPATTA** - NAJMEEN WITH EMBROIDERY FANCY LESS

**BOTTOM / INNER** - HEAVY SANTOON

Ⓢ DRY CLEAN ONLY.  
✘ DO NOT USE ANY BLEACH OR STAIN REMOVING CHEMICAL.  
IRON THE FABRIC AT MODERATE TEMPERATURE.

  
**MAHNUR**<sup>TM</sup>  
— FASHION —

**D.NO.26002**



**TOP** - FAUX GEORGATTE WITH EMBROIDERY SEQUENCE  
DAIMOND WORK

**DUPATTA** - NAJMEEN WITH EMBROIDERY FANCY LESS

**BOTTOM / INNER** - HEAVY SANTOON

Ⓢ DRY CLEAN ONLY.  
✘ DO NOT USE ANY BLEACH OR STAIN REMOVING CHEMICAL.  
IRON THE FABRIC AT MODERATE TEMPERATURE.



D.No.26001



D.No.26002



D.No.26003

  
**MAHNUR**<sup>™</sup>  
— FASHION —

**D.NO.26003**



**TOP** - FAUX GEORGATTE WITH EMBROIDERY SEQUENCE  
DAIMOND WORK

**DUPATTA** - NAJMEEN WITH EMBROIDERY FANCY LESS

**BOTTOM / INNER** - HEAVY SANTOON

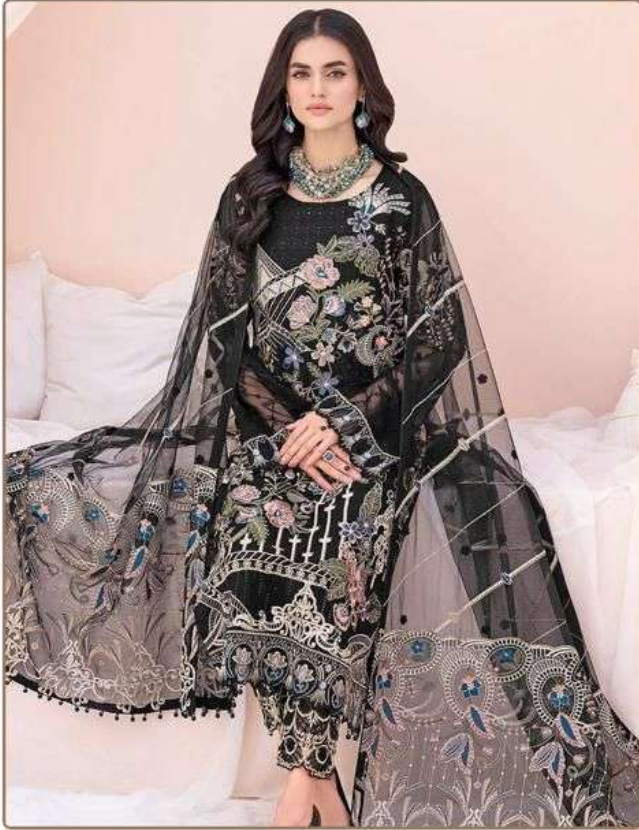
Ⓢ DRY CLEAN ONLY.  
✗ DO NOT USE ANY BLEACH OR STAIN REMOVING CHEMICAL.  
IRON THE FABRIC AT MODERATE TEMPERATURE.





  
**MAHNUR**<sup>TM</sup>  
— FASHION —

**D.NO.26001**



**TOP** - FAUX GEORGATTE WITH EMBROIDERY SEQUENCE  
DAIMOND WORK

**DUPATTA** - BUTTERFLY NET WITH EMBROIDERY FANCY LESS

**BOTTOM / INNER** - HEAVY SANTOON

Ⓢ DRY CLEAN ONLY.  
✗ DO NOT USE ANY BLEACH OR STAIN REMOVING CHEMICAL.  
IRON THE FABRIC AT MODERATE TEMPERATURE.



MAHNUR  
FASHION  
D.NO.26003







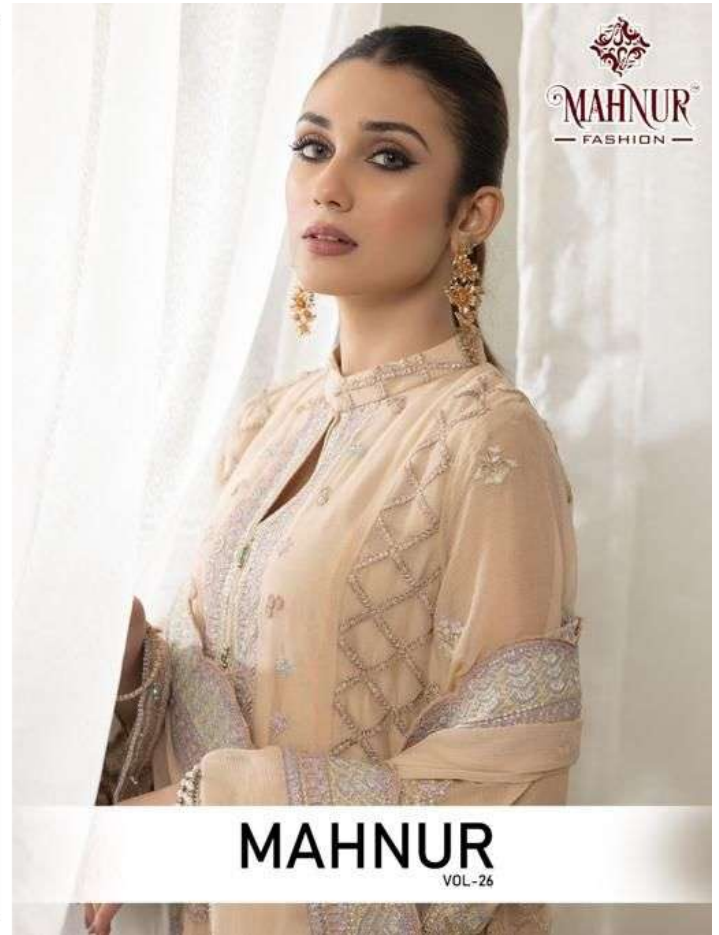




D.NO.26001



**MAHNUR**  
VOL-26



**MAHNUR**  
VOL-26



D.NO.26003



MAHNUR  
FASHION



D.NO.26002

