

LILY & LALI[®]
GULS PRIDE
A PRODUCT OF *fiona* GROUP[®]

Chicken Kari





LILY&LALI[®]
GULSPRIDE
A PRODUCT OF SION GROUP

Chicken Kari

FABRICS DETAILS

TOP

SCHIFFLI AND HANDWORK ON CHANDERI
SILK WITH INNER

DUPATTA

PURE ORGENZA PRINT DUPATTA

PANT

PURE VISCOSE PANT

SIZES

M, L, XL, XXL, 3XL

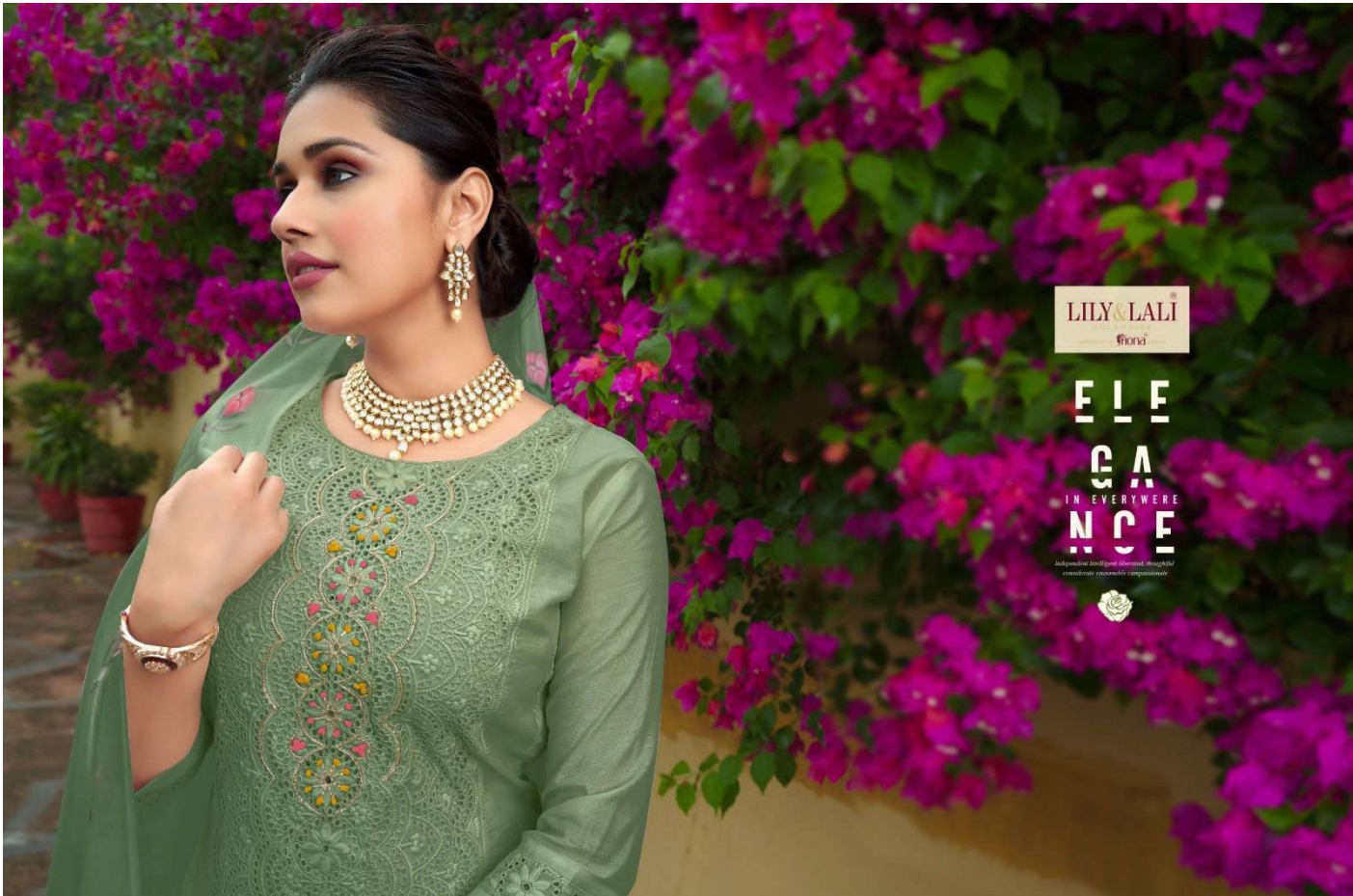
NOTE - POCKET INSIDE THE PANT



LILY & LALI
BY LALITA KUMAR
A DIVISION OF Sirona

C L A S S I C
NEVER GOES OUT OF STYLE
*for today's women, who prefer
to make a style statement
whenever she steps out.*





LILY & LALI
Pioneers

E
L
E
G
A
N
C
E
I
N
E
V
E
R
Y
W
H
E
R
E

Independent Intelligent. Shrewd. Thoughtful.
Conscious. Resourceful. Compassionate.





LILY & LALI
fiona

FABULOUS

FOR FASHION

For the woman who
wants to make a statement
you decide subtle, then
what she wants to express
to the way you and the
way you live.



///D.No.13105//



FABULOUS

FOR FASHION

*Don't be into trends, don't
make fashion or set you, but
you decide what you are,
what you want to express
by the way you and the
way you live.*

LILY & LALI
fiona





LILY & LALI
GALLERY
established in 2010
fiona

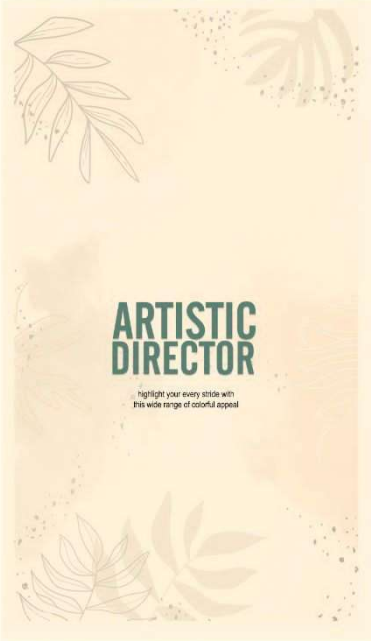
 DIRECTOR ARTISTIC

our lives are colored by the hues of rich emotions and experiences. or aims to capture the heat of these sentiments with the colors of happiness. vibrant, vivid and boldly catch, this range of ethnic wear makes sure it spreads colors wherever the or women go





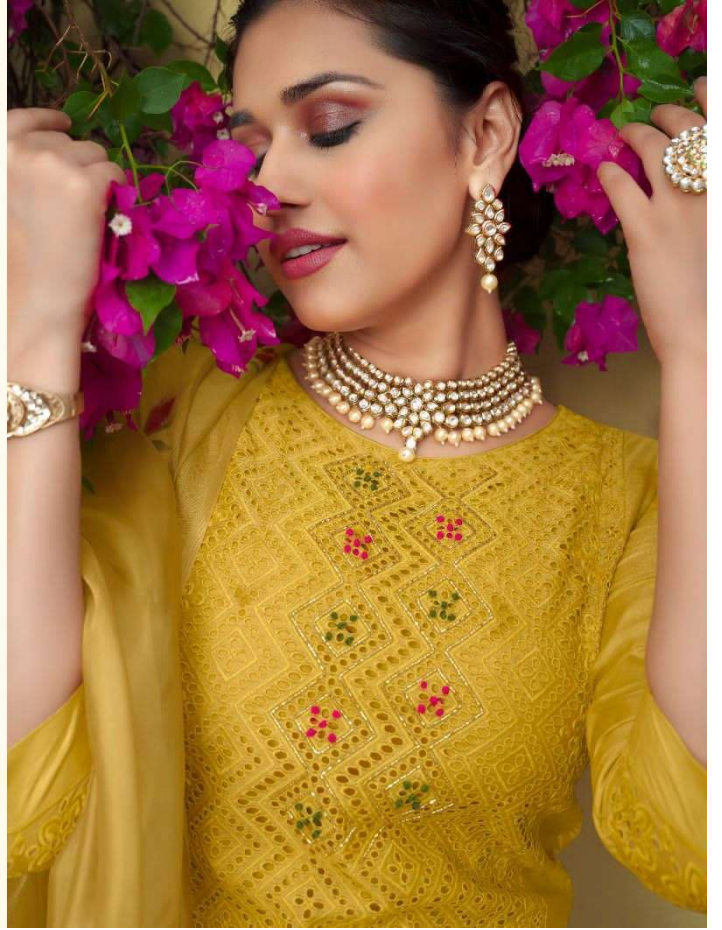
LILY & LALI
SINCE 1988
A Division of Sironia





LILY&LALI
BY SIONA

M
O
D
E
R
N
M
I
M
I
T
E
D
W
I
T
H
C
L
A
S
S
Y
T
O
U
C
H





LILY & LALI[®]
GULS PRIDE
A PRODUCT OF *fiona* GROUP[®]

Chicken Kari

