

# ZAHA AASIYA

10197 HITS COLOURS



**ZAHA**  
**READYMADE**



**D.No.10197-C**

- |                           |   |
|---------------------------|---|
| <b>TOP-</b>               | <b>PURE ORGANZA WITH<br/>HEAVY EMBROIDERY</b> |
| <b>BOTTOM<br/>INNER -</b> | <b>DULL SANTOON</b>                           |
| <b>DUPATTA-</b>           | <b>ORGANZA WITH<br/>HEAVY EMBROIDERY</b>      |



**ZAHA**  
READYMADE



**D.No.10197-B**

**TOP-** PURE ORGANZA WITH  
HEAVY EMBROIDERY

**BOTTOM  
INNER -** DULL SANTOON

**DUPATTA-** ORGANZA WITH  
HEAVY EMBROIDERY

**ZAHA**  
READYMADE

**TOP-** PURE ORGANZA WITH HEAVY EMBROIDERY

**BOTTOM /INNER-** DULL SANTOON

**DUPATTA-** ORGANZA WITH HEAVY EMBROIDERY



D.No.10197-A



D.No.10197-B



D.No.10197-C



**AASIYA**

10197 HITS COLOURS

**TOP** PURE ORGENZA WITH  
HEAVY EMBROIDERY

**ZAHA**

**BOTTOM-INNER** SILK STICH  
READYMADE

**D.No.10197-C**

**DUPATTA** ORGENZA WITH  
HEAVY EMBROIDERY

# AASIYA

10197 HITS COLOURS

**TOP** PURE ORGENZA WITH  
HEAVY EMBROIDERY

**BOTTOM-INNER**  
Dull santoon

**DUPATTA** ORGENZA WITH  
HEAVY EMBROIDERY



# ZAHA



10197-A



10197-B



10197-C



**ZAHA**  
**READYMADE**

**D.No.10197-A**

- |                           |   |
|---------------------------|---|
| <b>TOP-</b>               | <b>PURE ORGANZA WITH<br/>HEAVY EMBROIDERY</b> |
| <b>BOTTOM<br/>INNER -</b> | <b>DULL SANTOON</b>                           |
| <b>DUPATTA-</b>           | <b>ORGANZA WITH<br/>HEAVY EMBROIDERY</b>      |



**AASIYA**

10197 HITS COLOURS

**TOP** PURE ORGENZA WITH  
HEAVY EMBROIDERY

**ZAHA**

**BOTTOM-INNER** SILK STICH  
READYMADE

**D.No.10197-B**

**DUPATTA** ORGENZA WITH  
HEAVY EMBROIDERY





**AASIYA**

10197 HITS COLOURS

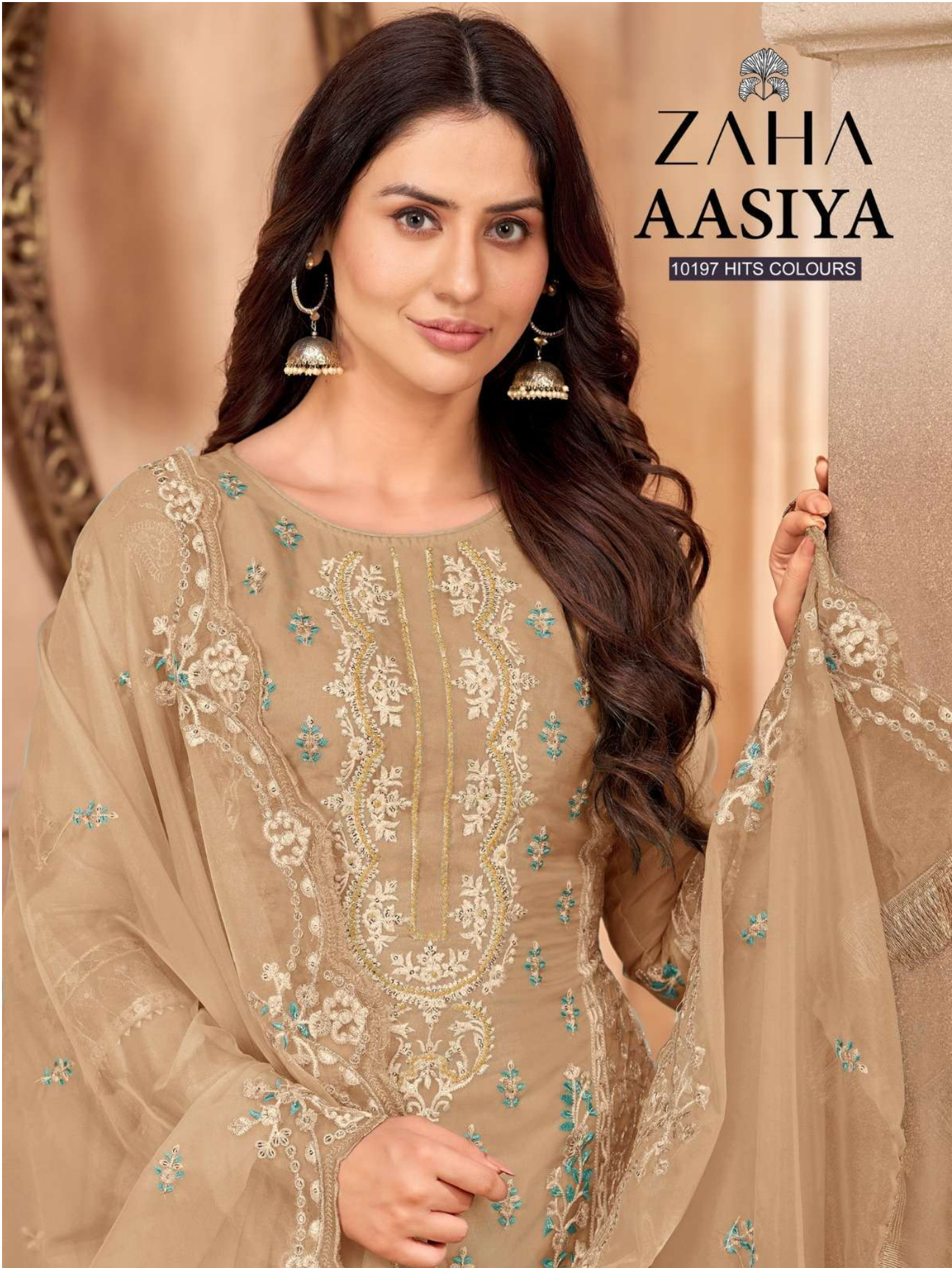
**TOP** PURE ORGENZA WITH  
HEAVY EMBROIDERY

**ZAHA**

**BOTTOM-INNER** SILK STICH  
READYMADE

**D.No.10197-A**

**DUPATTA** ORGENZA WITH  
HEAVY EMBROIDERY



# ZAHA AASIYA

10197 HITS COLOURS