



sheeshmahal®



#S-12052 A



sheeshmahal®



#S-12052 A

S
sheeshmahal®



#S-12052 A

Top- POLYESTER COTTON

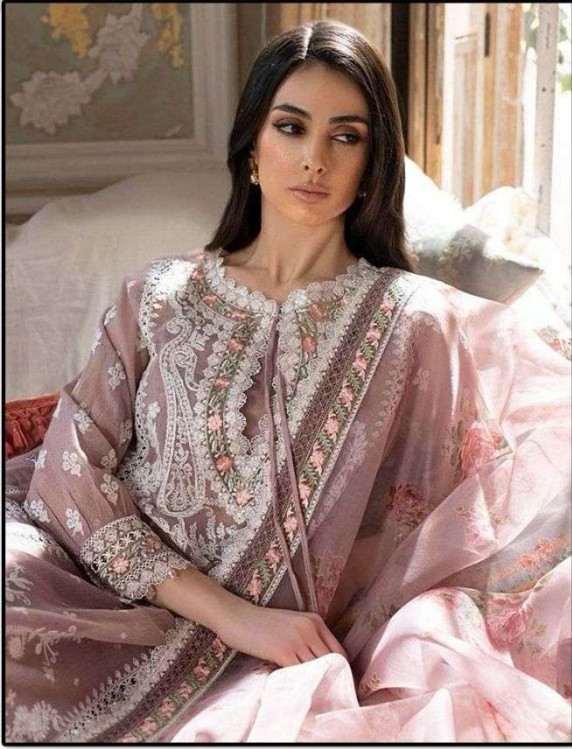
Bottom/Iner- POLYESTER COTTON

Dupatta- DIGITAL ORGANZA

WASHING INSTRUCTIONS
DO NOT USE ANY TYPE OF BLEACH OR STAIN REMOVING CHEMICALS
BEFORE DYEING OR COLORING SHOULD BE SOAKED IN WATER
ALL COMPONENTS SEPARATED FOR 15 MINUTES
DO NOT KEEP HOT FABRIC IN TRAYED FROM IN ORDER TO AVOID CRIP MARKS
HIGH-COLORED AND WASH FABRICS SEPARATELY
IRON CLOTHES AT MODERATE TEMPERATURE DO NOT DRY FABRIC IN DIRECT SUNLIGHT
(EXTRA LACES/HANGINGS AND ACCESSORIES ARE NOT INCLUDED)



S
sheeshmahal®



#S-12052 B

Top- POLYESTER COTTON

Bottom/Iner- POLYESTER COTTON

Dupatta- DIGITAL ORGANZA

WASHING INSTRUCTIONS
DO NOT USE ANY TYPE OF BLEACH OR STAIN REMOVING CHEMICALS
BEFORE DYEING/COLORING/FABRIC SHOULD BE SOAKED IN WATER
ALL COMPONENTS SHOULD BE SEPARATED FOR 15 MINUTES
DO NOT KEEP HOT IRON IN TOUCH WITH FABRIC TO AVOID SCORCHING
HIGH-COLORED AND DARK FABRICS SEPARATELY
IRON CLOTHES AT MODERATE TEMPERATURE DO NOT DRY FABRIC IN DIRECT SUNLIGHT
(EXTRA LACES/HANGINGS AND ACCESSORIES ARE NOT INCLUDED)




sheeshmahal®

Top- POLYESTER COTTON
Bottom/Iner- POLYESTER COTTON
Dupatta- DIGITAL ORGANZA



#S-12052 A



#S-12052 B



#S-12052 C

S
sheeshmahal®



#S-12052 C

Top- POLYESTER COTTON

Bottom/Iner- POLYESTER COTTON

Dupatta- DIGITAL ORGANZA

WASHING INSTRUCTIONS
DO NOT USE ANY TYPE OF BLEACH OR STAIN REMOVING CHEMICALS
BEFORE DYEING/COLORING/FABRIC SHOULD BE SOAKED IN WATER
ALL COMPONENTS SEPARATELY FOR 15 MINUTES
DO NOT KEEP HOT IRON. IRON THROUGH INVERTED TO AVOID CUP MARKS
HIGH-COLORED AND WASH FABRICS SEPARATELY
IRON CLOTHES AT MODERATE TEMPERATURE DO NOT DRY FABRIC IN DIRECT SUNLIGHT
(EXTRA LACES/HANGINGS AND ACCESSORIES ARE NOT INCLUDED)

