

HEER™

# Mehboob











Mehboob

9037

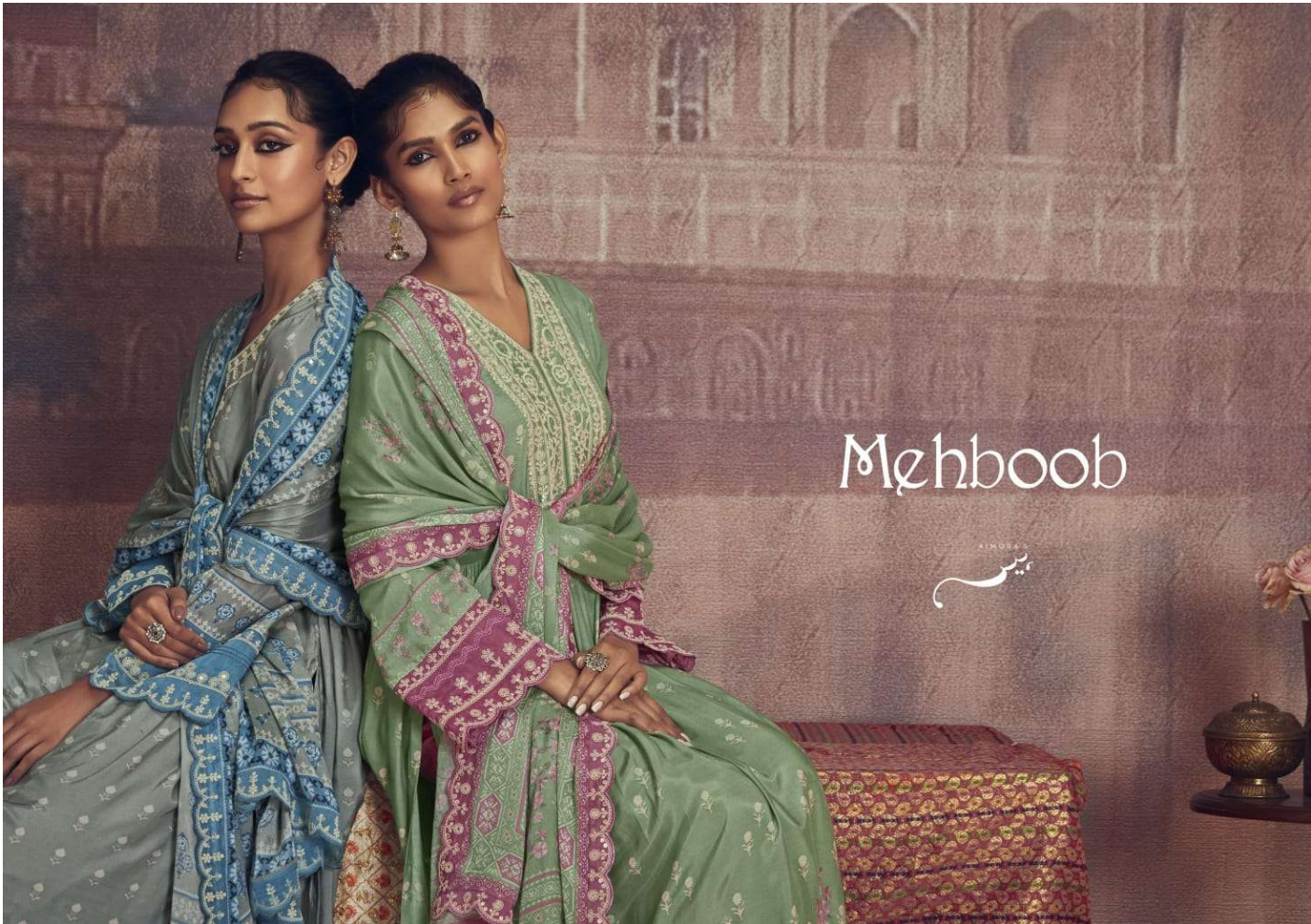
by  
SIR





श्रीर

9038



Mehboob





9031

9032

HEER



9035

9036



9033

9034

Mehboob



9037

9038



# Mehboob

## TOP

Pure muslin digital print with dori embroidery on neck and Dori scalloped embroidery on organza for sleeves

## DUPATTA

Pure chinnon chiffon with digital print and four sided organza scalloped dori embroidery

## BOTTOM

Pure cotton satin with scalloped dori embroidery on organza

*HEER*

KIMORA'S  
SIR



9033





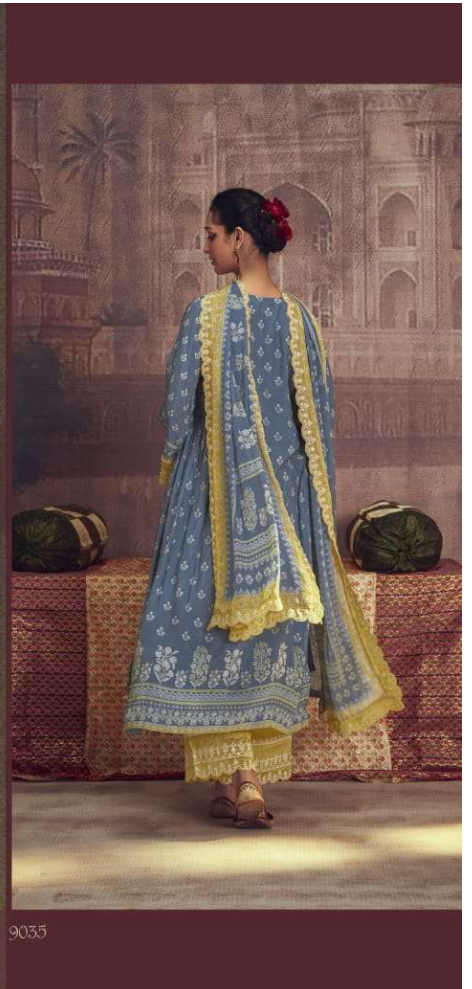
HEER

9033





HEER

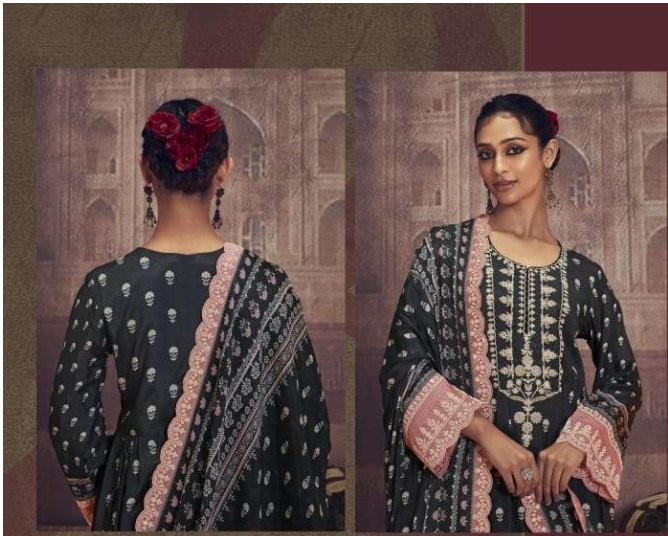


9035



9034





# Mehboob

9034

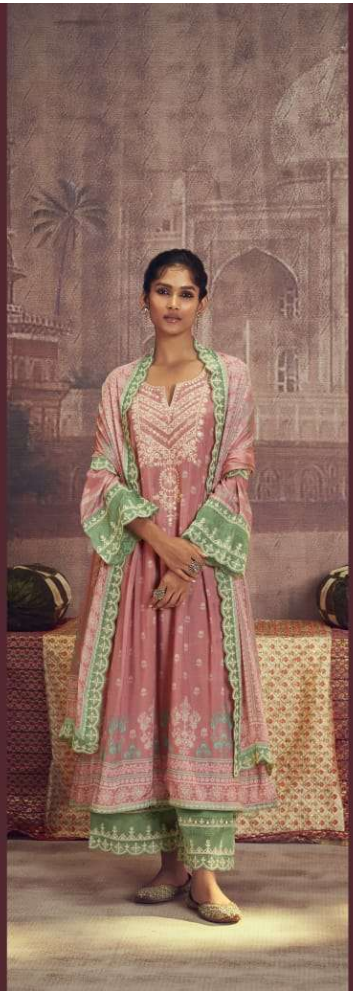
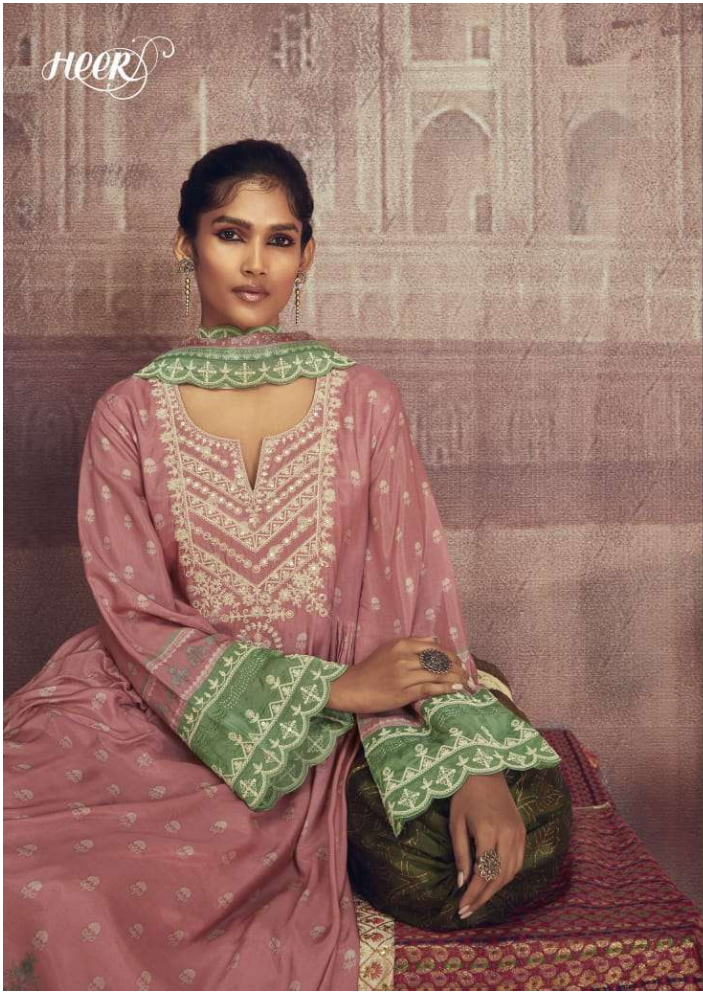




Mehboob



9035





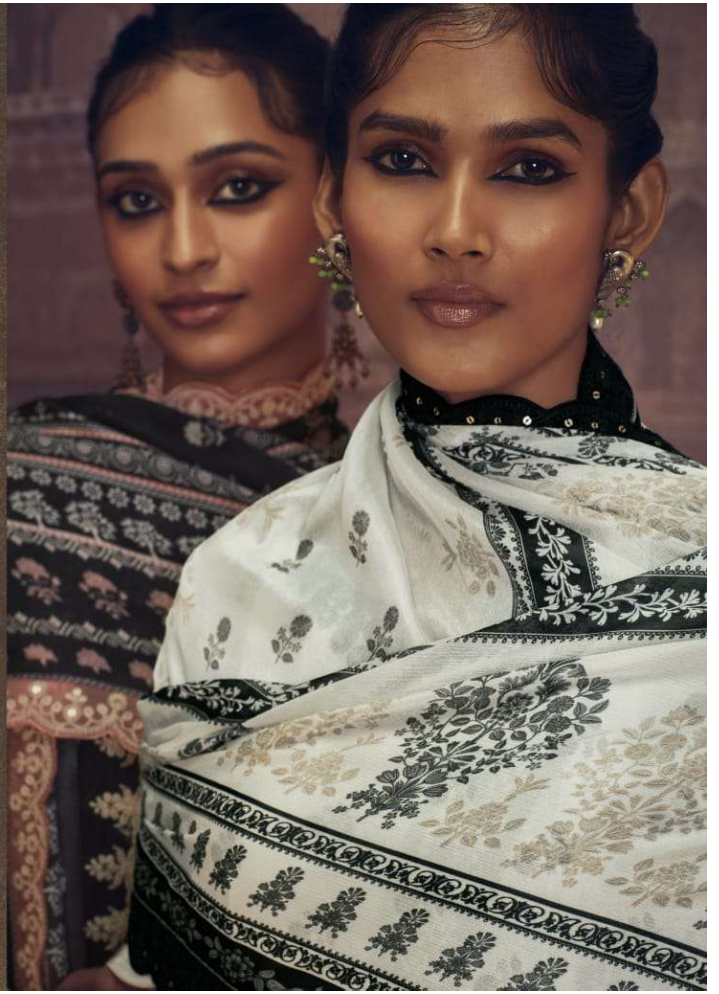
HEER™

# Mehboob



# Mehboob

KIMOGA'S







KINGRA'S  
KIR





9032

9032