

ZAHA AASIYA

10197 HITS COLOURS



ZAHA
READYMADE



D.No.10197-B

TOP- PURE ORGANZA WITH
HEAVY EMBROIDERY

BOTTOM
INNER - DULL SANTOON

DUPATTA- ORGANZA WITH
HEAVY EMBROIDERY



ZAHA
READYMADE



D.No.10197-C

TOP- PURE ORGANZA WITH
HEAVY EMBROIDERY

**BOTTOM
INNER -** DULL SANTOON

DUPATTA- ORGANZA WITH
HEAVY EMBROIDERY



ZAHA
READYMADE

D.No.10197-A

- | | |
|---------------------------|---------------------------------------|
| TOP- | PURE ORGANZA WITH
HEAVY EMBROIDERY |
| BOTTOM
INNER - | DULL SANTOON |
| DUPATTA- | ORGANZA WITH
HEAVY EMBROIDERY |

**ZAHA**
READYMADE

TOP- PURE ORGANZA WITH HEAVY EMBROIDERY

BOTTOM /INNER- DULL SANTOON

DUPATTA- ORGANZA WITH HEAVY EMBROIDERY



D.No.10197-A



D.No.10197-B



D.No.10197-C



AASIYA

10197 HITS COLOURS

TOP PURE ORGENZA WITH
HEAVY EMBROIDERY

ZAHA

BOTTOM-INNER SILK STICH
READYMADE

D.No.10197-B

DUPATTA ORGENZA WITH
HEAVY EMBROIDERY



AASIYA

10197 HITS COLOURS

TOP PURE ORGENZA WITH
HEAVY EMBROIDERY

ZAHA

BOTTOM-INNER SILK STICH
READYMADE

D.No.10197-C

DUPATTA ORGENZA WITH
HEAVY EMBROIDERY



AASIYA

10197 HITS COLOURS

TOP PURE ORGENZA WITH
HEAVY EMBROIDERY

ZAHA

BOTTOM-INNER SILK STICH
READYMADE

D.No.10197-A

DUPATTA ORGENZA WITH
HEAVY EMBROIDERY

AASIYA

10197 HITS COLOURS

TOP PURE ORGENZA WITH
HEAVY EMBROIDERY

BOTTOM-INNER
Dull santoon

DUPATTA ORGENZA WITH
HEAVY EMBROIDERY


ZAHA



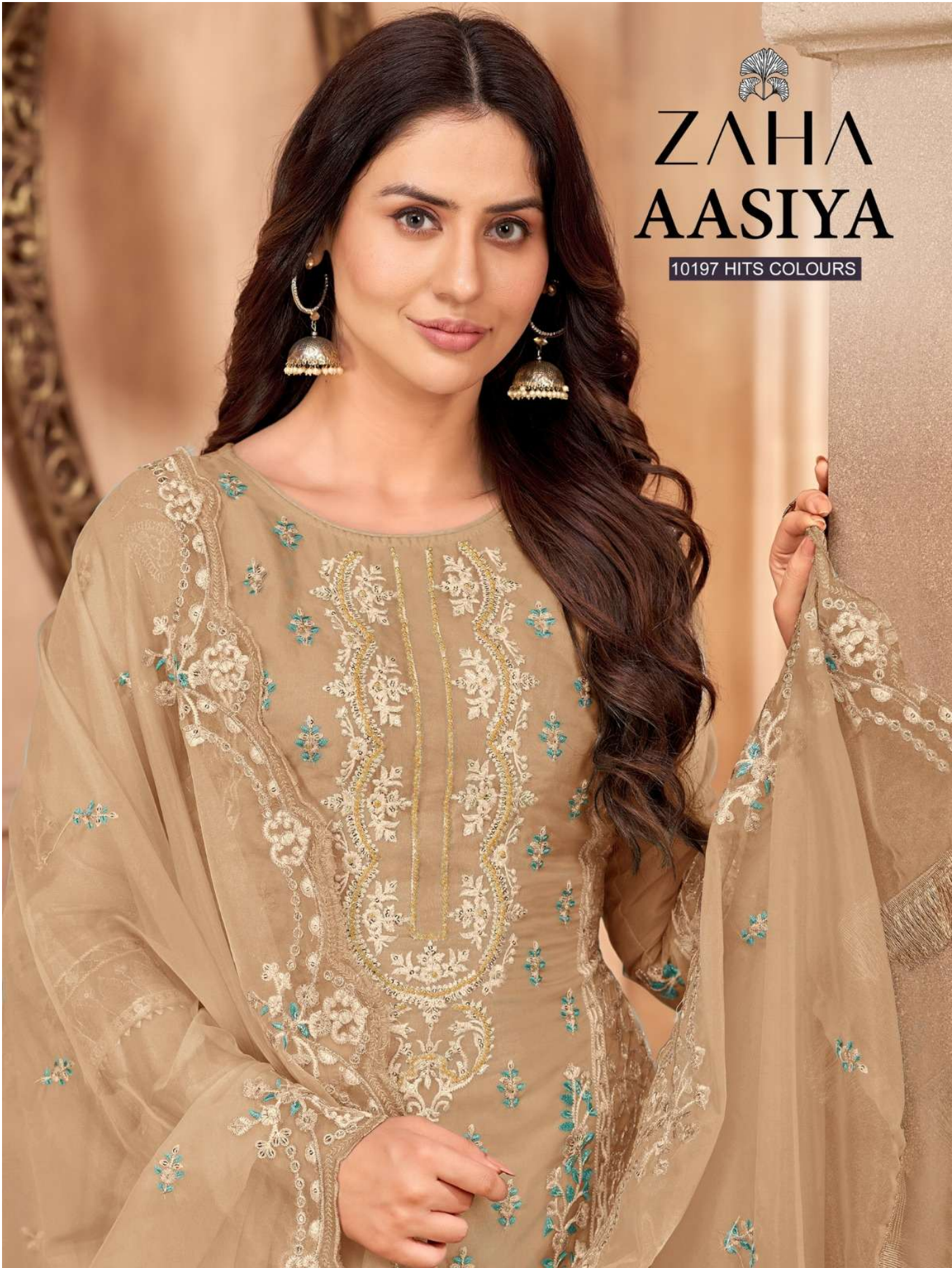
10197-A



10197-B



10197-C



ZAHA AASIYA

10197 HITS COLOURS