

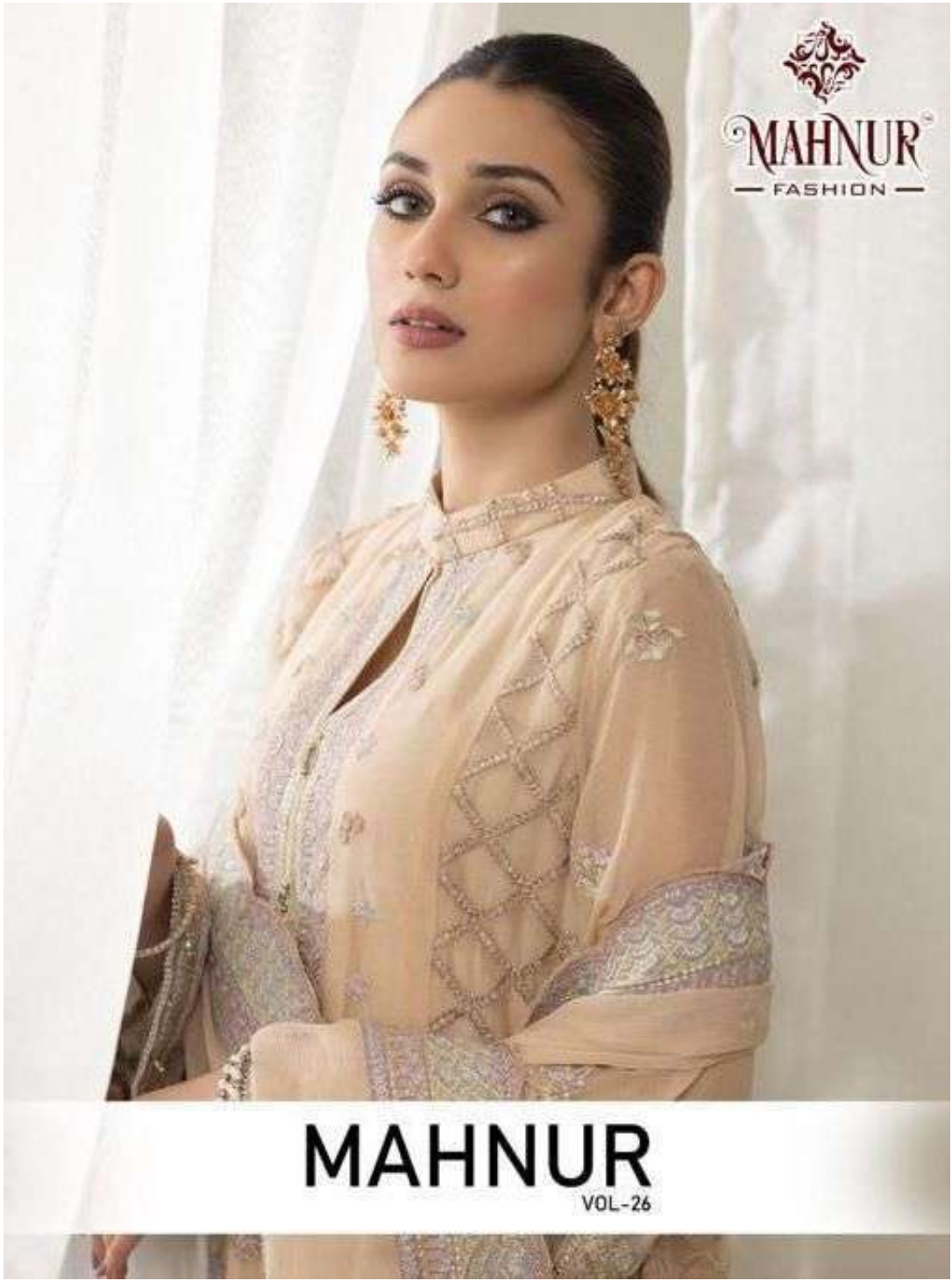

MAHNUR
— FASHION —

MAHNUR
VOL-26



MAHNUR
FASHION
D.NO.20003






MAHNUR
— FASHION —

MAHNUR
VOL-26




MAHNUR
FASHION



MAHNUR
VOL-26



A woman is seated on a white sofa, wearing a black and white patterned traditional dress with a matching shawl. The dress features intricate floral and geometric patterns. She is also wearing a necklace and earrings. The background is a plain, light-colored wall.



D.NO.26001



MAHUR
FASHION



D.NO.26002





D.NO.26003





D.No.26001



D.No.26002



D.No.26003





MAHNUR
FASHION

D.NO 26001



FREE DELIVERY WITH BANGLORE DELIVERY
BANGLORE ONLY
MATERIAL: 100% COTTON
HEAVY SARTON