



# CHARIZMA VOL-2



D.No.113-A

**TOP-** Cambric cotton with heavy embroidery work

**BOTTOM-INNER** Semi lawn

**DUPATTA-** Butterfly Net with Heavy Embroidery





# CHARIZMA VOL-2



D.No.113-A

**TOP-** Cambric cotton with heavy embroidery work

**BOTTOM-INNER** Semi lawn

**DUPATTA-** Butterfly Net with Heavy Embroidery





**CHARIZMA  
VOL-2**



**D.No.113-B**

**TOP-** Cambric cotton with heavy embroidery work

**BOTTOM-INNER** Semi lawn

**DUPATTA-** Butterfly Net with Heavy Embroidery



# CHARIZMA

VOL-2

**MSD**  
FASHION





**CHARIZMA  
VOL-2**



**D.No.113-D**

**TOP-** Cambric cotton with heavy embroidery work

**BOTTOM-INNER** Semi lawn

**DUPATTA-** Butterfly Net with Heavy Embroidery





# CHARIZMA VOL-2



D.No.113-C

**TOP-** Cambric cotton with heavy embroidery work

**BOTTOM-INNER** Semi lawn

**DUPATTA-** Butterfly Net with Heavy Embroidery





**MSD**  
FASHION  
**CHARIZMA**  
VOL-2

D.No.113-B

**TOP:** Cambric cotton with heavy embroidery work

**BOTTOM-INNER:** Semi lawn

**DUPATTA:** Butterfly Net with Heavy Embroidery





# CHARIZMA VOL-2

TOP

BOTTOM  
INNER

DUPATTA

Cambric cotton with  
heavy embroidery work

Semi lawn

Butterfly Net with  
Heavy Embroidery



113-A



113-B



113-C



113-D





**MSD**  
FASHION  
CHARIZMA  
VOL-2



D.No. 113-A

**TOP:** Cambric cotton with heavy embroidery work

**BOTTOM-INNER:** Semi lawn

**DUPATTA:** Butterfly Net with Heavy Embroidery





**MSD**  
FASHION  
**CHARIZMA**  
VOL-2



**D.No.113-B**

**TOP** - Cambric cotton with heavy embroidery work

**BOTTOM-INNER** - Semi lawn

**DUPATTA** - Butterfly Net with Heavy Embroidery



**MSD**  
FASHION

CHARIZMA  
VOL-2



D.No. 113-D

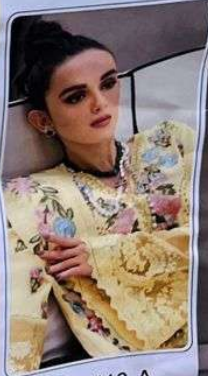
**TOP:** Cambric cotton with heavy embroidery work

**BOTTOM-INNER:** Semi lawn

**DUPATTA:** Butterfly Net with Heavy Embroidery



**MSD**  
FASHION  
**CHARIZMA**  
VOL-2



D.No.113-A

**TOP** - Cambric cotton with heavy embroidery work  
**BOTTOM-INNER** - Semi lawn  
**DUPATTA** - Butterfly Net with Heavy Embroidery



**MSL**  
FASHION  
**CHARIZMA**  
VOL-2



D.No.113-D

**TOP** Cambric cotton with heavy embroidery work

**BOTTOM-INNER** Semi lawn

**DUPATTA** Butterfly Net with Heavy Embroidery



**MSD**  
FASHION  
CHARIZMA  
VOL-2



D.No.113-C

TOP: Cambric cotton with heavy embroidery work

BOTTOM-INNER: Semi lawn

DUPATTA: Butterfly Net with Heavy Embroidery



**MSD**  
FASHION  
**CHARIZMA**  
VOL-2



D.No. 113-C

TOP	Cambrie cotton with heavy embroidery work
BOTTOM INNER	Serri lawn
DUPATTA	Butterfly Net with Heavy Embroidery