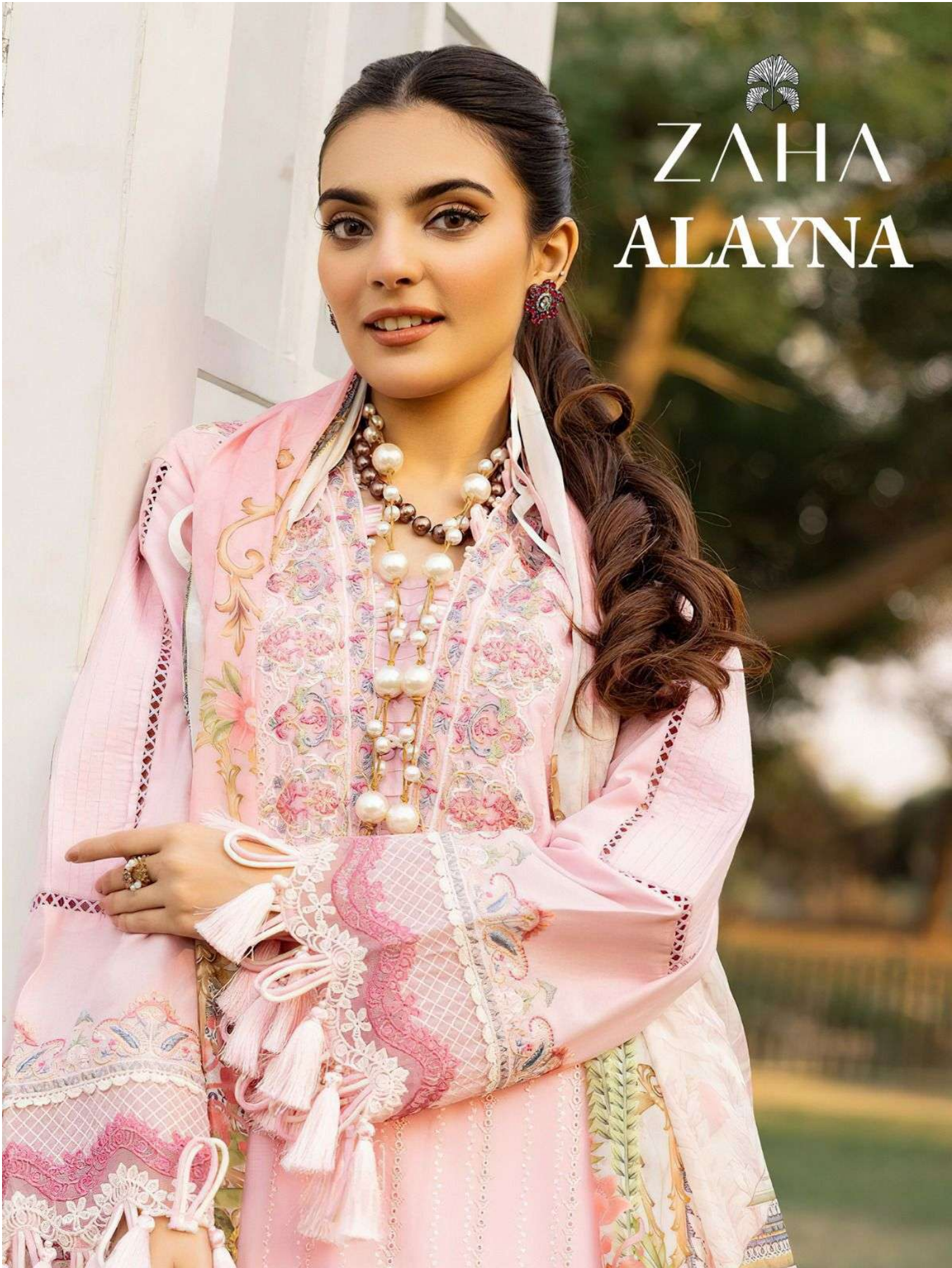


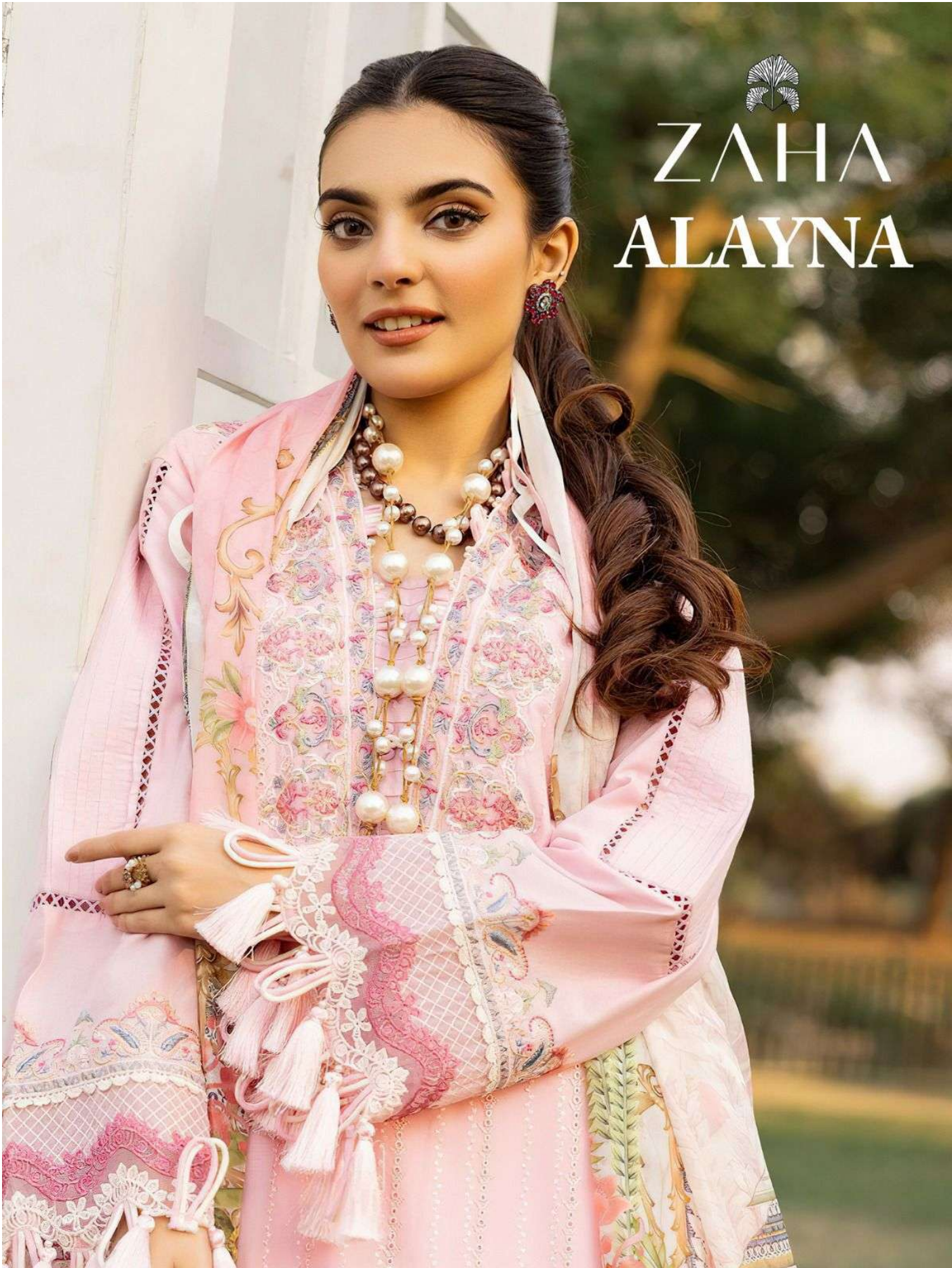


# ZAHA ALAYNA





# ZAHA ALAYNA





**ALAYNA**

**ZAHA**

**D.No.10171**

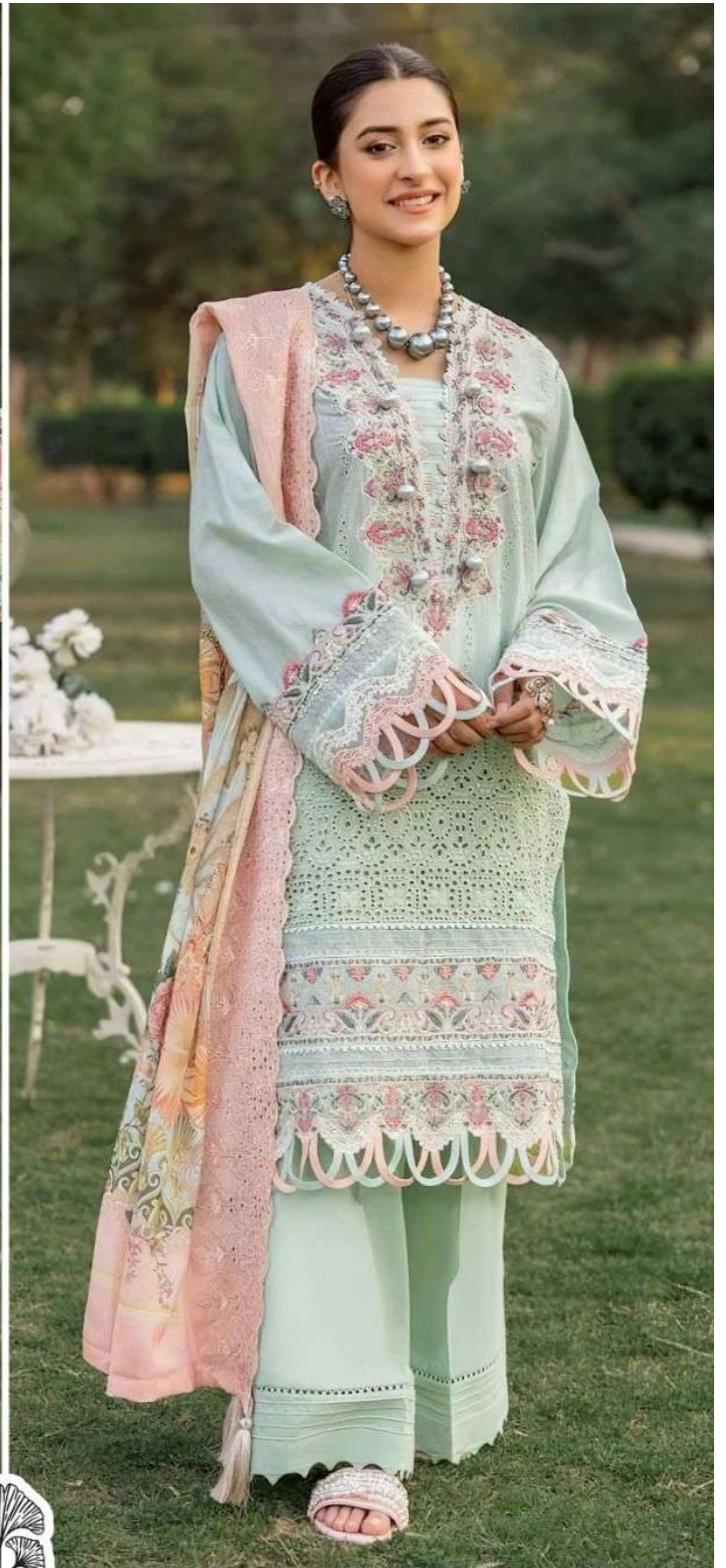
**TOP**

Cambric Cotton With  
Heavy Embroidery Work

**BOTTOM-INNER**  
Semi Lawn

**DUPATTA**

Tubby Silk With  
Print



**ALAYNA**

**ZAHA**

**D.No.10170**

**TOP** Cambric Cotton With Heavy Embroidery Work

**BOTTOM-INNER** Semi Lawn

**DUPATTA** Tubby Silk With Print



**ALAYNA**

**ZAHA**

**D.No.10173**

**TOP**

Cambric Cotton With  
Heavy Embroidery Work

**BOTTOM-INNER**  
Semi Lawn

**DUPATTA**

Tubby Silk With  
Print



**ALAYNA**

**ZAHA**

**D.No.10172**

**TOP**

Cambric Cotton With  
Heavy Embroidery Work

**BOTTOM-INNER**  
Semi Lawn

**DUPATTA**

Tubby Silk With  
Print



**ALAYNA ZAHA** D.No.10170  
TOP Cambric Cotton With Heavy Embroidery Work  
BOTTOM-INNER Semi Lace  
DUPATTA Tulle Silk With Print

ALAYNA

ZAHA



10170



10171



10172



10173





**ALAYNA ZAHA** D.No.10171  
TOP Cambric Cotton With Heavy Embroider- BOTTOM-IF Semi La. Tully Silk Wash Print



**ALAYNA ZAHA**  
TOP: Cambria Cotton With Heavy Embroidery Work  
BOTTOM-INNER: Semi Lawn



**ALAYNA ZAH**  
TOP Cambric Cotton With Heavy Embroidery Work



**ALAYNA ZAHHA D.N.**  
TOP Cambric Cotton With Heavy Embroidery Work BOTTOM Sen DUBA



**ALAYNA ZAHARA**

TOP Cambic Cotton With Heavy Embroidery Work

BOTTOM-IN...  
Semi L...



**ALAYNA ZAHA** D.No.10172  
TOP Cambric Cotton With Heavy Embroidery Work