



Crimson

 **401- S**

**TOP - CAMBRIC COTTON WITH EMBROIDERY
CHICKENKARI WORK**

BOTTOM - SOLID COTTON

**DUPATTA - BUTTER FLY NET WITH HEAVY
EMBROIDERY PATCH**



Saniya 
TRENDZ

DRY CLEAN ONLY. 
DO NOT USE ANY BLEACH OR STAIN REMOVING CHEMICAL. 
IRON THE FABRIC AT MODERATE TEMPERATURE. 



Crimson

 **401- S**

**TOP - CAMBRIC COTTON WITH EMBROIDERY
CHICKENKARI WORK**

BOTTOM - SOLID COTTON

**DUPATTA - BUTTER FLY NET WITH HEAVY
EMBROIDERY PATCH**



Saniya 
TRENDZ

DRY CLEAN ONLY. 
DO NOT USE ANY BLEACH OR STAIN REMOVING CHEMICAL. 
IRON THE FABRIC AT MODERATE TEMPERATURE. 



Crimson

 **401- C**

**TOP - CAMBRIC COTTON WITH EMBROIDERY
CHICKENKARI WORK**

BOTTOM - SOLID COTTON

**DUPATTA - BUTTER FLY NET WITH HEAVY
EMBROIDERY PATCH**



Saniya 
TRENDZ

DRY CLEAN ONLY. 
DO NOT USE ANY BLEACH OR STAIN REMOVING CHEMICAL. 
IRON THE FABRIC AT MODERATE TEMPERATURE. 



ST- 401 T

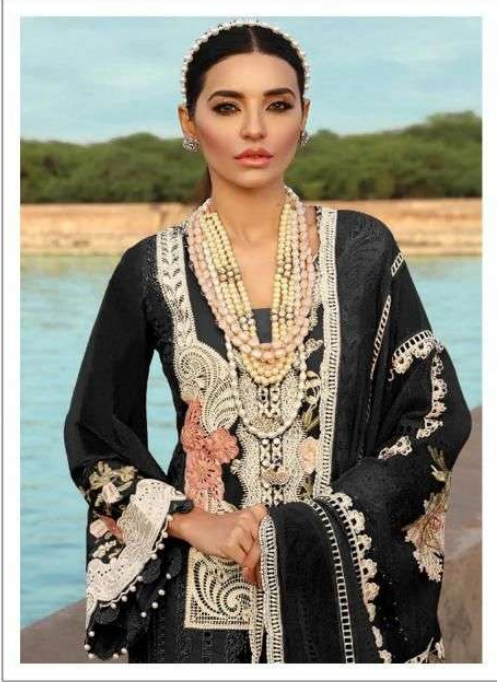
TOP - CEMRIC COTTON

BOTTOM - NET

DUPATTA - POLYSTER COTTON







ST- 401 O

TOP - CEMRIC COTTON

BOTTOM - NET

DUPATTA - POLYSTER COTTON





