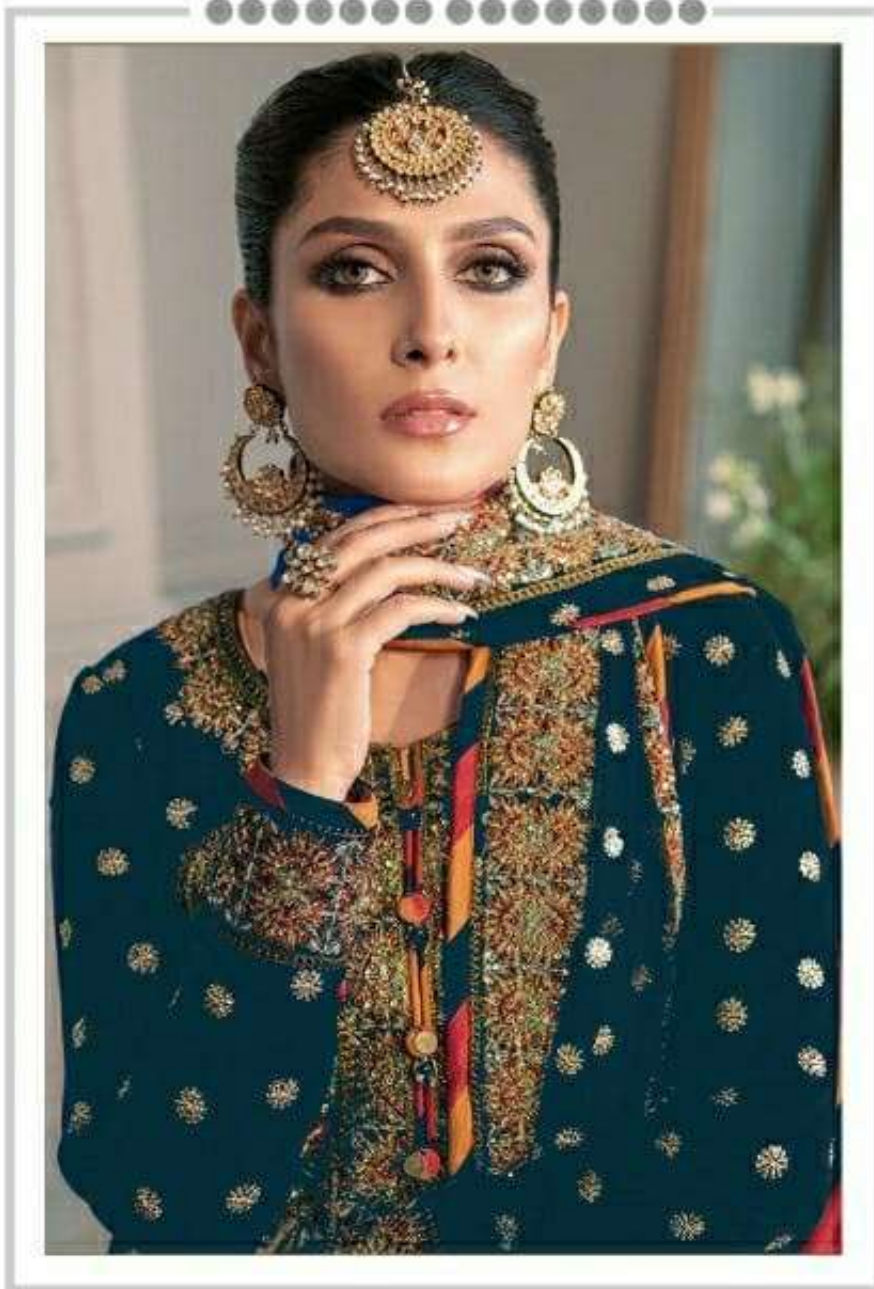



Ramsha[®]
554-NX





#R-554-C



TOP- FOX GEORGET WITH HEAVY EMBROIDERY
BOTTOM- DULL SANTOON
DUPATTA - NET WITH HEAVY EMBROIDERY

Ⓟ DRY CLEAN ONLY.
ⓧ DO NOT USE ANY BLEACH OR STAIN REMOVING CHEMICAL.
Ⓜ IRON THE FABRIC AT MODERATE TEMPERATURE.



#R-554-D



TOP- FOX GEORGET WITH HEAVY EMBROIDERY
BOTTOM- DULL SANTOON
DUPATTA - NET WITH HEAVY EMBROIDERY

Ⓟ DRY CLEAN ONLY.
⊗ DO NOT USE ANY BLEACH OR STAIN REMOVING CHEMICAL.
☎ IRON THE FABRIC AT MODERATE TEMPERATURE.



#R-554-A



TOP- FOX GEORGET WITH HEAVY EMBROIDERY
BOTTOM- DULL SANTOON
DUPATTA - NET WITH HEAVY EMBROIDERY

Ⓟ DRY CLEAN ONLY.
ⓧ DO NOT USE ANY BLEACH OR STAIN REMOVING CHEMICAL.
Ⓡ IRON THE FABRIC AT MODERATE TEMPERATURE.



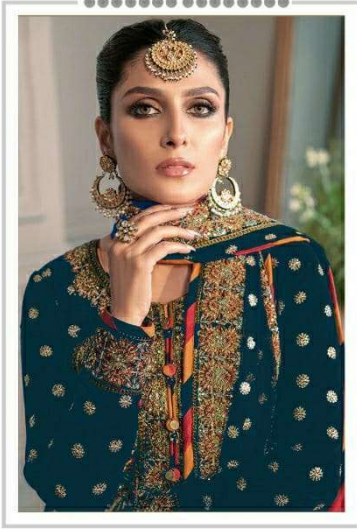
#R-554-B



TOP- FOX GEORGET WITH HEAVY EMBROIDERY
BOTTOM- DULL SANTOON
DUPATTA - NET WITH HEAVY EMBROIDERY

Ⓟ DRY CLEAN ONLY.
⊗ DO NOT USE ANY BLEACH OR STAIN REMOVING CHEMICAL.
☎ IRON THE FABRIC AT MODERATE TEMPERATURE.

Ramsha®
554-NX



#R-554-A



#R-554-B

Ramsha®
554-NX



#R-554-C



#R-554-D



Ramshri
#R-554-C

TOP: KUKICHUWET WITH HEAVY EMBROIDERY
BOTTOM: DOLA SASTON
DURRYTA - NET WITH HEAVY EMBROIDERY

BY: CLEAR ONLY
DO NOT USE BLEACH OR OTHER BLEACHING CHEMICALS
WASH IN COLD WATER



Ramsha
#R-554-D

TOP: FOLK CROQUISAT WITH HEAVY EMBROIDERY
BOTTOM: DUNE SANTONG
IN: TACTA - NET WITH HEAVY EMBROIDERY

WASH IN COLD WATER
DO NOT BLEACH
DO NOT IRON
DO NOT DRY CLEAN
DO NOT TUMBLE DRY



Ramsha
#R-554-B

TOP FOR GRADUATE WITH HEAVY EMBROIDERY
MATERIAL: 80% SILK 20% COTTON
DECORATE: NET WITH HEAVY EMBROIDERY

FOR MORE INFORMATION VISIT
WWW.RAMSHA.COM


Ramsha[®]
554-NX

