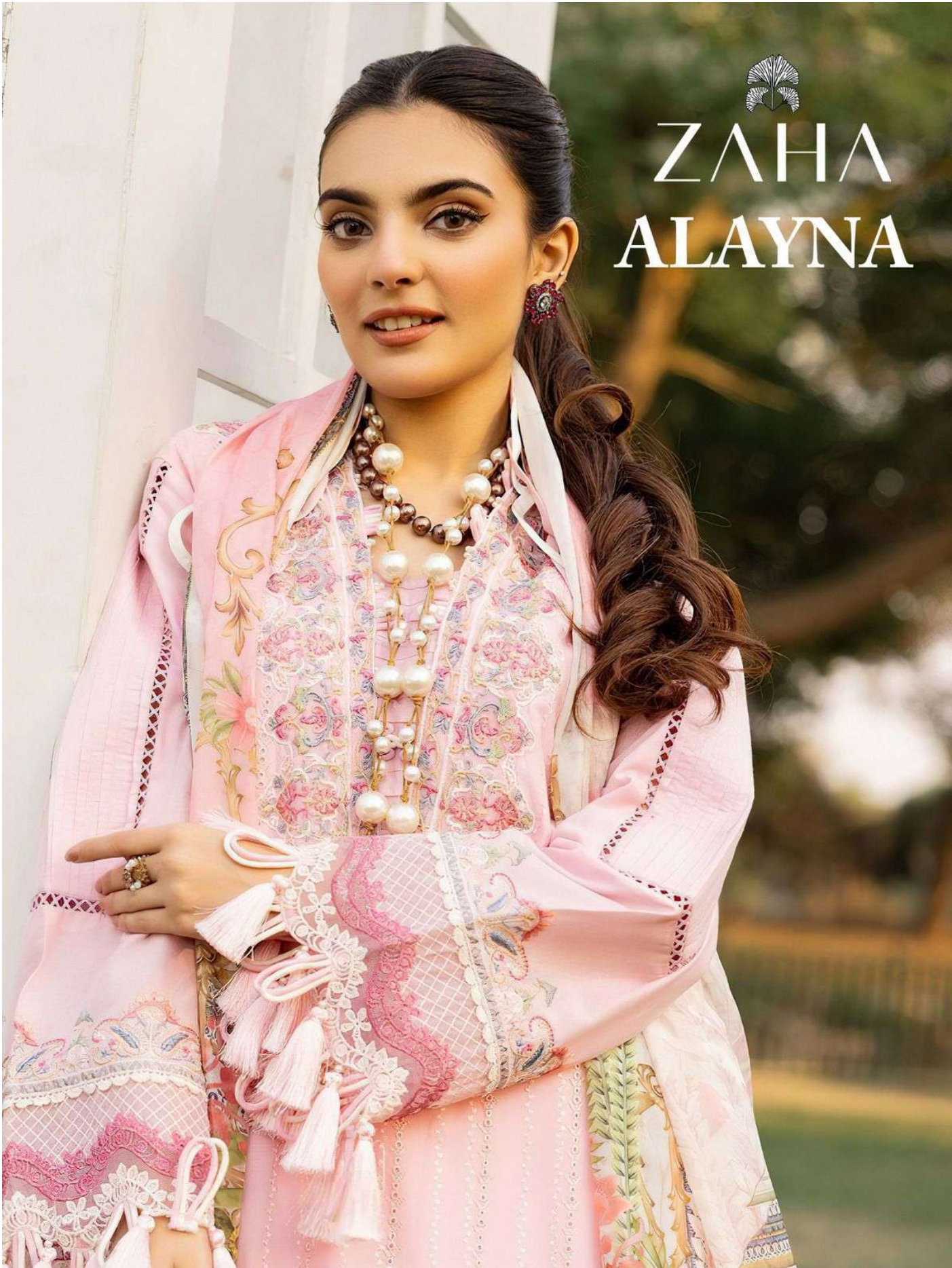


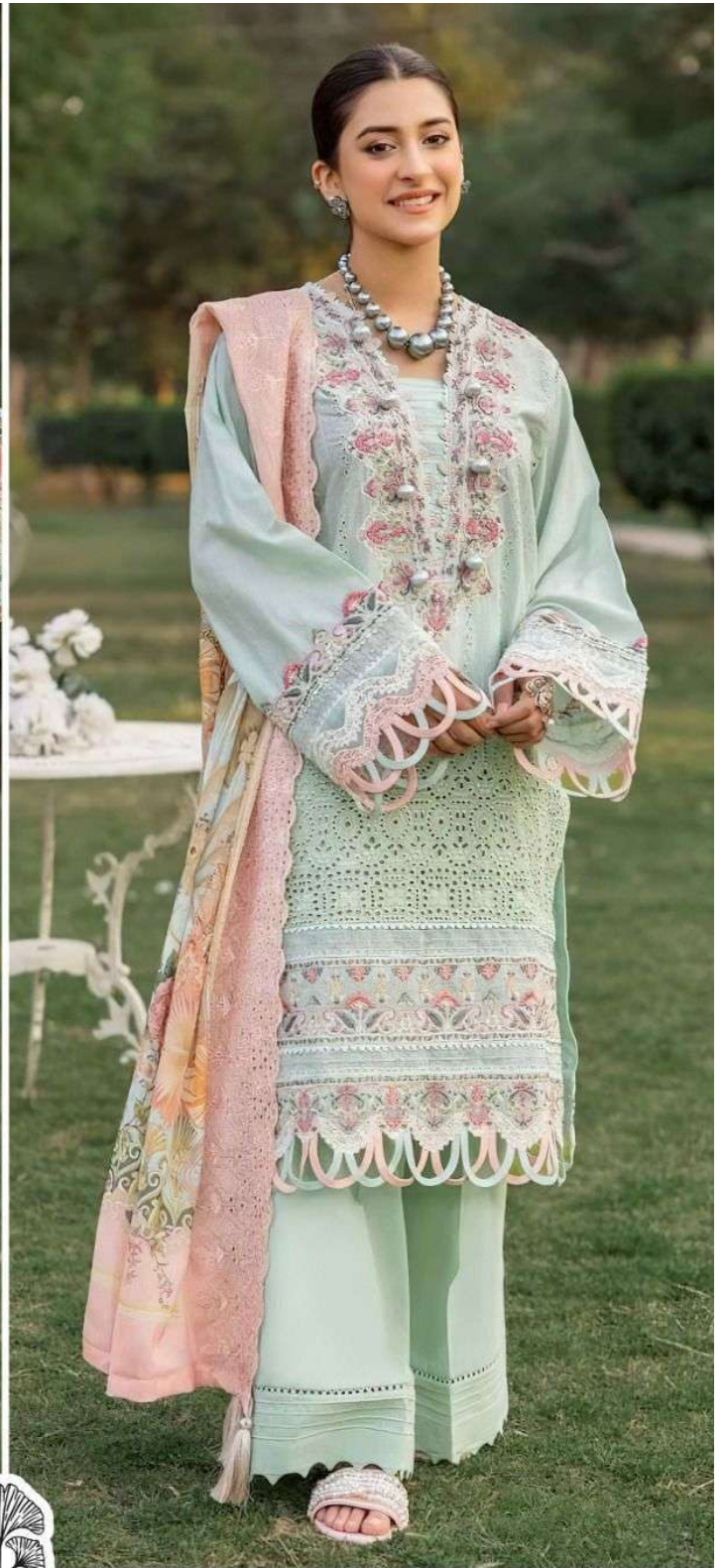
ZAHA  
ALAYNA





ZAHA  
ALAYNA





**ALAYNA**

**ZAHA**

**D.No.10170**

**TOP** Cambric Cotton With Heavy Embroidery Work

**BOTTOM-INNER** Semi Lawn

**DUPATTA** Tubby Silk With Print





**ALAYNA**

**ZAHA**

**D.No.10171**

**TOP** Cambric Cotton With Heavy Embroidery Work

**BOTTOM-INNER** Semi Lawn

**DUPATTA** Tubby Silk With Print





**ALAYNA**

**ZAHA**

**D.No.10172**

**TOP**

Cambric Cotton With  
Heavy Embroidery Work

**BOTTOM-INNER**  
Semi Lawn

**DUPATTA**

Tubby Silk With  
Print





**ALAYNA**

**ZAHA**

**D.No.10173**

**TOP** Cambric Cotton With Heavy Embroidery Work

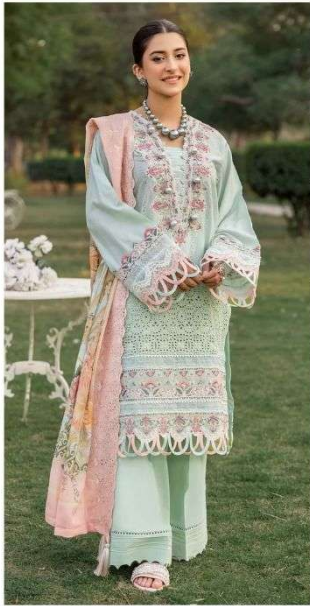
**BOTTOM-INNER** Semi Lawn

**DUPATTA** Tubby Silk With Print



# ALAYNA

# ZAHA



10170



10171



10172



10173





**ALAYNA ZAHA** D.No.10171  
TOP Cambric Cotton With Heavy Embroider- BOTTOM-IF Tubby Silk With Print Semi La.





**ALAYNA ZAHHA** D.N-  
TOP Cambric Cotton With Heavy Embroidery Work BOTTOM Sen DUBA





**ALAYNA ZAHA** D.No.10172  
TOP Cambric Cotton With Heavy Embroidery Work  
With





**ALAYNA ZAHA** D.No.10170  
TOP Cambric Cotton With Heavy Embroidery Work  
BOTTOM-INNER Semi Lace  
DUPATTA Tubby Silk With Print