



sheeshmahal®

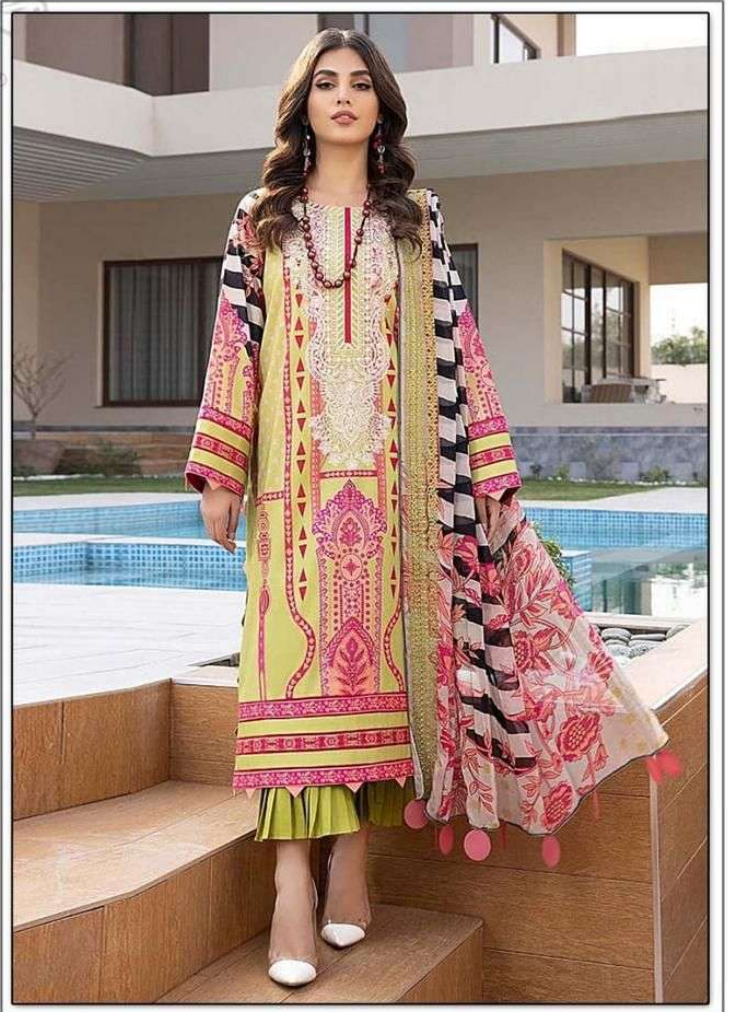


S
sheeshmahal®

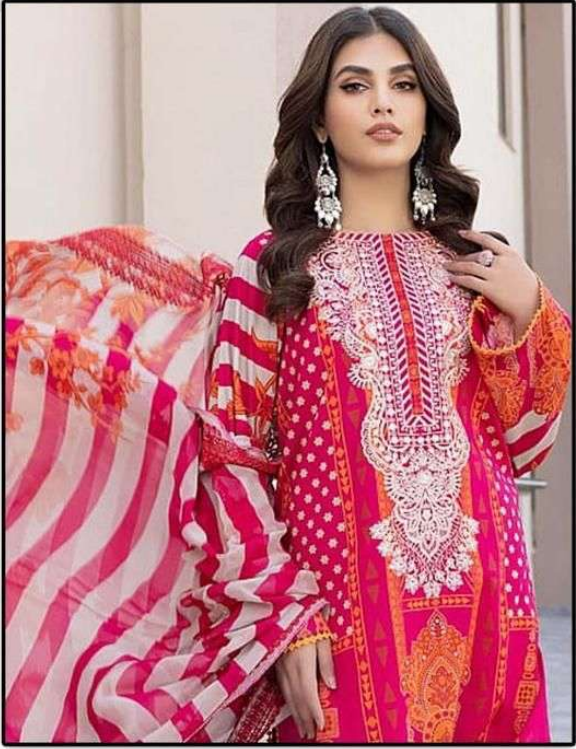


#S-3159

WASHING INSTRUCTIONS
DO NOT USE ANY TYPE OF BLEACH OR STAIN REMOVING CHEMICALS
BEFORE DRYING CLOTHING ITEMS SHOULD BE CAREFULLY DROPPED IN WATER
AND COMPONENTS SEPARATED FOR 15 MINUTES
DO NOT USE HOT IRONS OR DRYERS IN ORDER TO AVOID CUP MARKS
HIGH-COLORED AND WHITE FABRICS DRY BEST
IRON CLOTHES AT MODERATE TEMPERATURE DO NOT DRY FABRIC IN DIRECT SUNLIGHT
(EXTRA LACE, HANGINGS AND ACCESSORIES ARE NOT INCLUDED)



S
sheeshmahal®

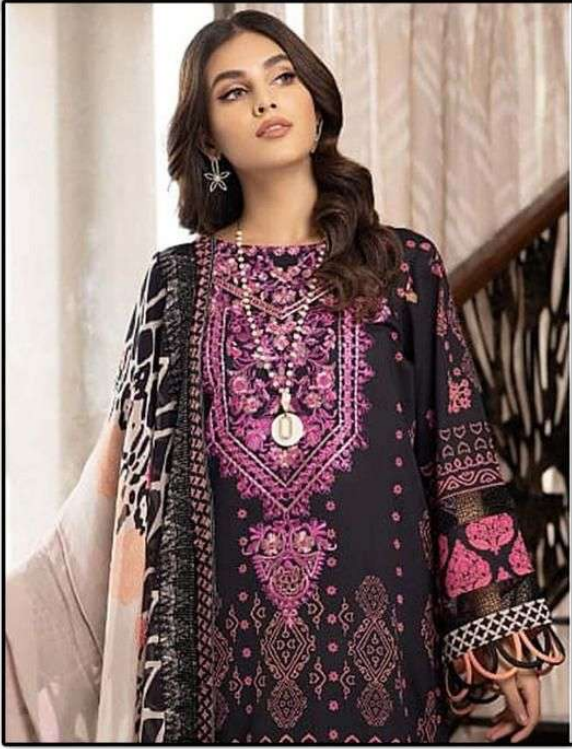


#S-3160

WASHING INSTRUCTIONS
DO NOT USE HOT TYPE OF SOAP OR STAIN REMOVING CHEMICALS
BEFORE DYEING/COLORING/FABRIC SHOULD BE SOAKED IN WATER
ALL COMPONENTS SEPARATELY FOR 15 MINUTES
DO NOT KEEP WET FABRIC IN TRAYED POUCH IN ORDER TO AVOID CLIP MARKS
HIGH-COLORED AND WHITE FABRIC SEPARATELY
IRON CLOTHES AT MODERATE TEMPERATURE DO NOT DRY FABRIC IN DIRECT SUNLIGHT
(EXTRA LACE/HANDKERCHIEF AND ACCESSORIES ARE NOT INCLUDED)

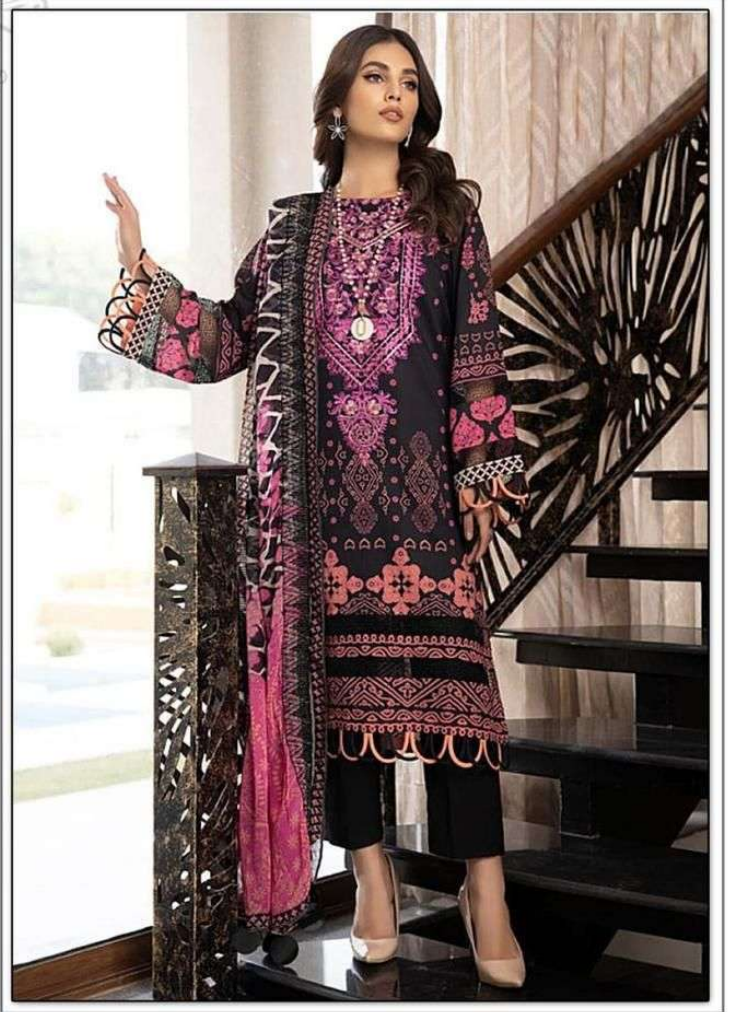


S
sheeshmahal®

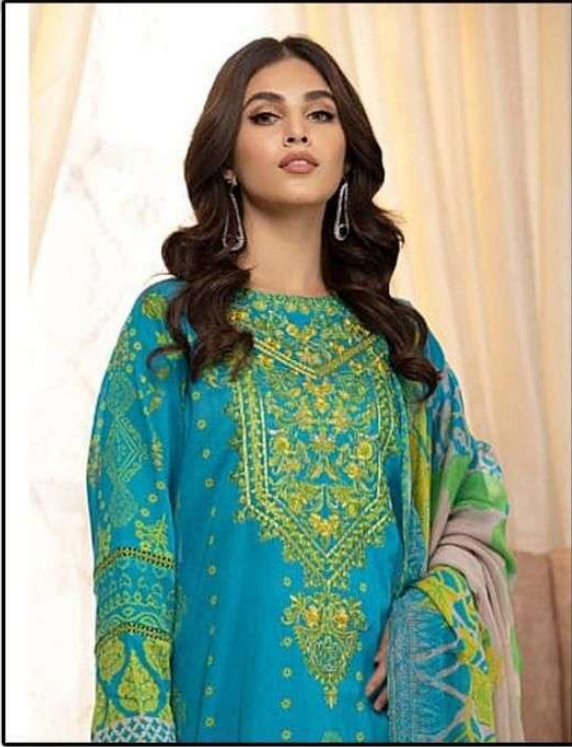


#S-3162

WASHING INSTRUCTIONS
DO NOT USE DRY TYPE OF DYEING OR DRY CLEANING PROCESSES
BEFORE DYEING OR CLEANING SHOULD BE SOAKED IN WATER
ALL COMPONENTS SEPARATELY FOR 15 MINUTES
DO NOT USE HOT WATER IN DYEING OR CLEANING TO AVOID COLOR LOSS
WASH COLORED AND WHITE FABRICS SEPARATELY
IRON CLOTHES AT MODERATE TEMPERATURE DO NOT DRY FABRIC IN DIRECT SUNLIGHT
(EXTRA LACES/HANDKERCHIEFS AND ACCESSORIES ARE NOT INCLUDED)



S
sheeshmahal®



#S-3161

WASHING INSTRUCTIONS
DO NOT USE ANY TYPE OF BLEACH OR OTHER BLEACHING AGENTS
BEFORE DYEING OR COLORING SHOULD BE DONE IN WATER
ALL COMPONENTS WASHED FOR 15 MINUTES
DO NOT KEEP IN FABRIC IN TRAY FOR LONGER THAN 24 HOURS
WASH COLOURED AND WHITE FABRICS SEPARATELY
IRON CLOTHES AT MODERATE TEMPERATURE DO NOT DRY FABRIC IN DIRECT SUNLIGHT
(EXTRA LACES/HANDLES AND ACCESSORIES ARE NOT INCLUDED)





#S-3159



#S-3160



#S-3161



#S-3162











sheeshmahal®

