

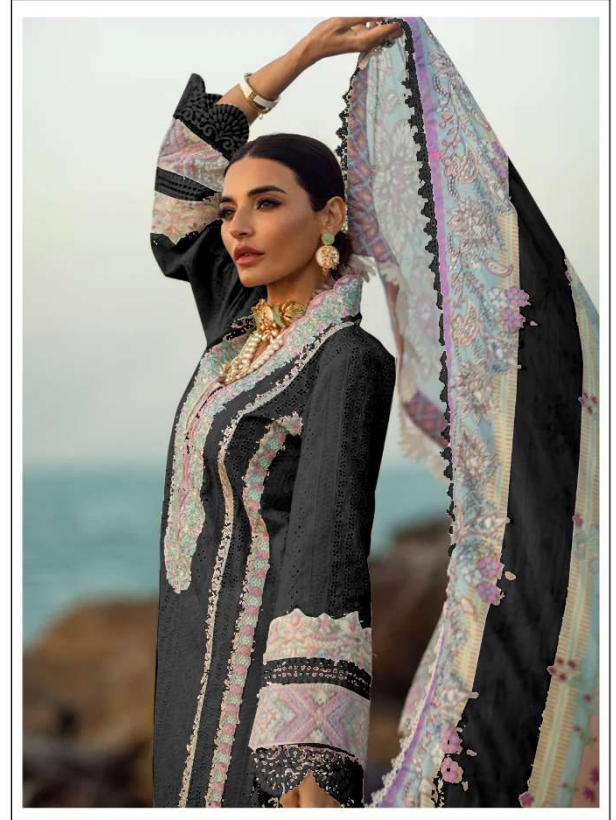
**TOP- CAMBRIC COTTON BORING WORK WITH HEAVY EMBROIDERY**

M-218 B

**BOTTOM/INNER- SEMI COTTON**

**DUPATTA/NET- TABBY SILK DIGITAL PRINTED/ MAL MAL DIGITAL PRINTED DUPTA**

- ☉ DRY CLEAN ONLY.
- ✘ DO NOT USE ANY BLEACH OR STAIN REMOVING CHEMICAL.
- ☎ IRON THE FABRIC AT MODERATE TEMPERATURE.



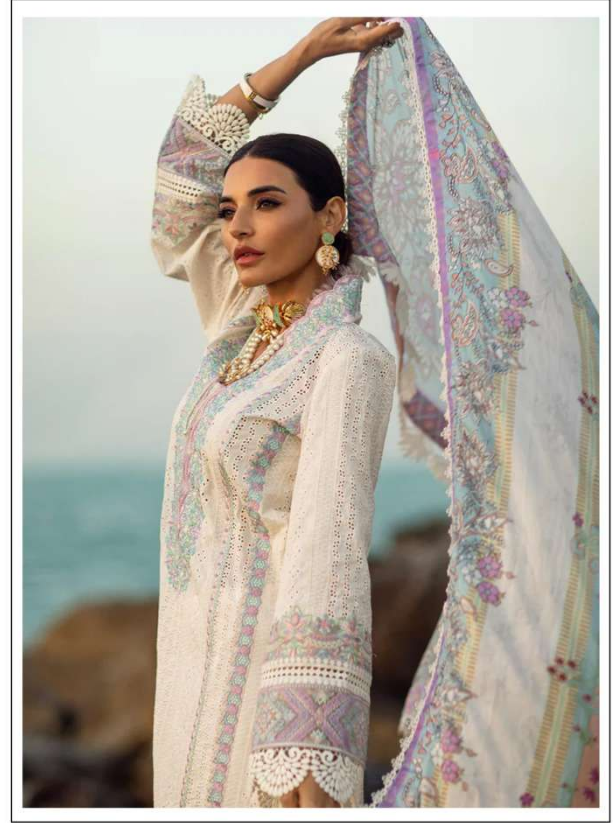
**TOP- CAMBRIC COTTON BORING WORK  
WITH HEAVY EMBROIDERY**

M-218 B

**BOTTOM/INNER- SEMI COTTON**

**DUPATTA/NET- TABBY SILK DIGITAL  
PRINTED/ MAL MAL DIGITAL PRINTED DUPTA**

- ☉ DRY CLEAN ONLY.
- ✗ DO NOT USE ANY BLEACH OR STAIN REMOVING CHEMICAL.
- ☎ IRON THE FABRIC AT MODERATE TEMPERATURE.



**TOP- CAMBRIC COTTON BORING WORK  
WITH HEAVY EMBROIDERY**

M-218 A

**BOTTOM/INNER- SEMI COTTON**

**DUPATTA/NET- TABBY SILK DIGITAL  
PRINTED/ MAL MAL DIGITAL PRINTED DUPTA**

- ☉ DRY CLEAN ONLY.
- ✗ DO NOT USE ANY BLEACH OR STAIN REMOVING CHEMICAL.
- ☎ IRON THE FABRIC AT MODERATE TEMPERATURE.



**TOP- CAMBRIC COTTON BORING WORK  
WITH HEAVY EMBROIDERY**

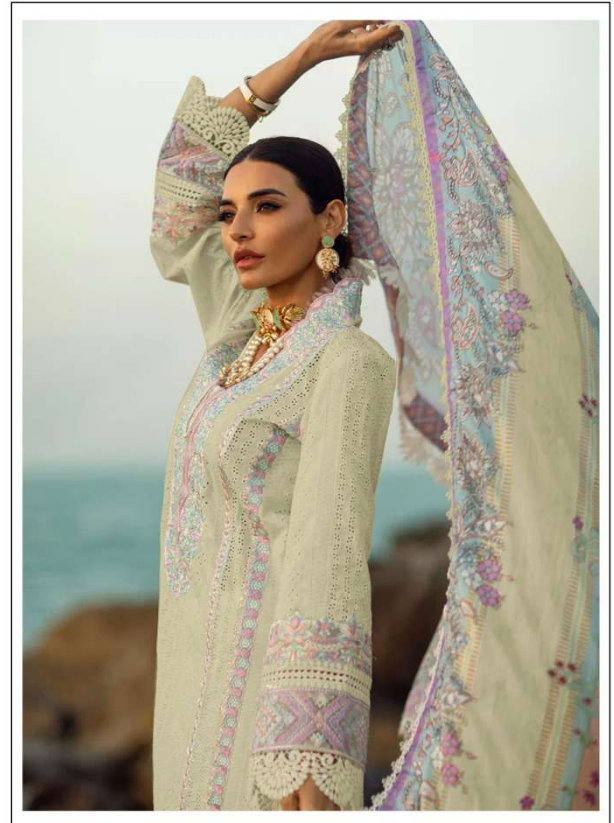
M-218 D

**BOTTOM/INNER- SEMI COTTON**

**DUPATTA/NET- TABBY SILK DIGITAL  
PRINTED/ MAL MAL DIGITAL PRINTED DUPTA**

- ☉ DRY CLEAN ONLY.
- ✘ DO NOT USE ANY BLEACH OR STAIN REMOVING CHEMICAL.
- ☎ IRON THE FABRIC AT MODERATE TEMPERATURE.





**TOP- CAMBRIC COTTON BORING WORK  
WITH HEAVY EMBROIDERY**

M-218 F

**BOTTOM/INNER- SEMI COTTON**

**DUPATTA/NET- TABBY SILK DIGITAL  
PRINTED/ MAL MAL DIGITAL PRINTED DUPTA**

- ☉ DRY CLEAN ONLY.
- ✘ DO NOT USE ANY BLEACH OR STAIN REMOVING CHEMICAL.
- ☎ IRON THE FABRIC AT MODERATE TEMPERATURE.





MUSHQ



TOP: CAMBRIC COTTON BOWING WORK WITH HEAVY EMBROIDERY  
BOTTOM: LINER: SEMI COTTON  
DUPATA: TERRY SILK & DIGITAL PRINTED DUPATA

M-218 A