



D.no-184-I (Organza)



-:TOP:-

Organza Embroidery.

-:BOTTAM/INNER:-

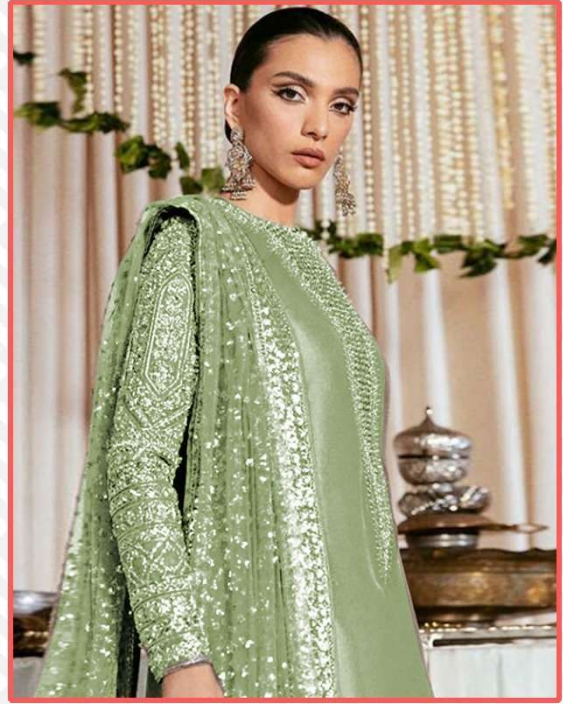
Santoon.

-:DUPATTA:-

Heavy Embroidery With Four Side Lace.



D.no-184-I (Organza)



-:TOP:-

Organza Embroidery.

-:BOTTAM/INNER:-

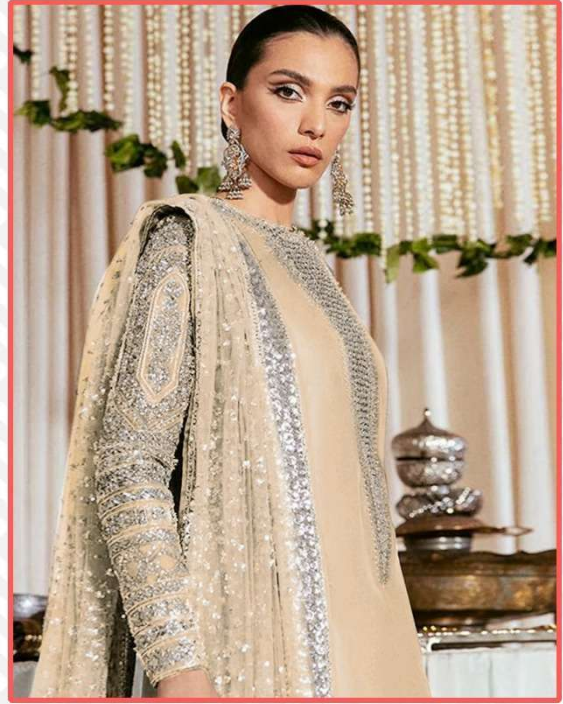
Santoon.

-:DUPATTA:-

Heavy Embroidery With Four Side Lace.



D.no-184-J (Organza)



-:TOP:-

Organza Embroidery.

-:BOTTAM/INNER:-

Santoon.

-:DUPATTA:-

Heavy Embroidery With Four Side Lace.



D.no-184-L (Organza)



-:TOP:-

Organza Embroidery.

-:BOTTAM/INNER:-

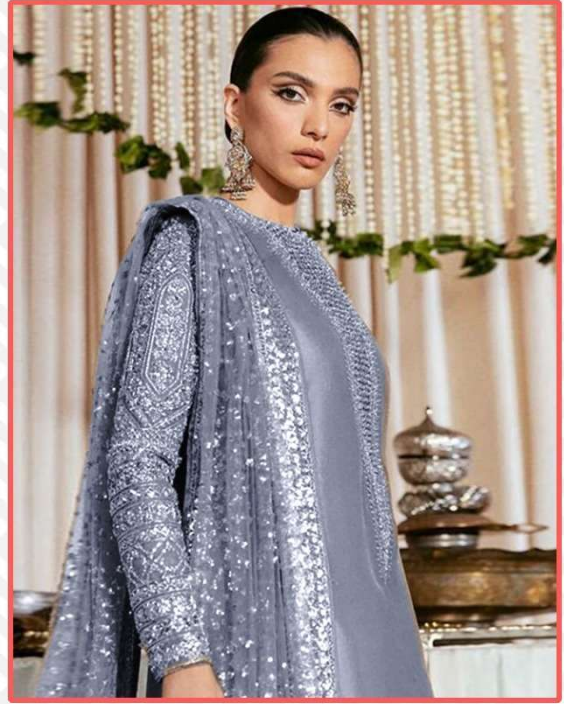
Santoon.

-:DUPATTA:-

Heavy Embroidery With Four Side Lace.



D.no-184-K (Organza)



-:TOP:-

Organza Embroidery.

-:BOTTAM/INNER:-

Santoon.

-:DUPATTA:-

Heavy Embroidery With Four Side Lace.



D.no-184-I

-:TOP:-
Organza Embroidery.



D.no-184-J

-:BOTTAM/INNER:-
Santoon



D.no-184-K

-:DUPATTA:-
Heavy Embroidery With Four Side Lace.



D.no-184-L









Dinzaa
Suits

D.no-184-1 (Organza)



DP
Emb
-HO
AM/INN
loc