

PANACHE

It is said that you cast a spell on ONE and all. When they behold the first GLIMPSE of you... they simply can't look away.

notes of
style

Beautiful
MINDS

It is said that you cast a spell on ONE and all. When they behold the first GLIMPSE of you... they simply can't look away.



PANACHE

It is said that you cast a spell on ONE and all. When they behold the first GLIMPSE of you... they simply can't look away.

notes of
style

Beautiful
MINDS

It is said that you cast a spell on ONE and all. When they behold the first GLIMPSE of you... they simply can't look away.





It is said that you cast a spell on one and all. When they behold the first glimpse of you... they simply can't look away. Many wonder, afraid and to themselves, what magic spells lie at your disposal. And we tell them in the power of your eye, blessed with designs that enchant and enrapture all around you!





DESIGNER'S COLLECTION





Doorway
TO WONDERS



PORTRAIT OF LIFE





 Sadhana

PORTRAIT OF LIFE

Clad in your charming sari, you are a reflection of all the qualities which make life so special. You exhale beauty into the world around you, and breathe life into the staid, the mundane, the pale. As you smile, flowers begin to bloom and freshness seeps into existence, touching and transforming everything around you.





Sadhana



VISAGE OF ENAMOUR

If it is said that you cast a spell on one and all, when they behold the first glimpse of you, they simply can't look away. Many women, proud of their beauty, and magic spells lie at their disposal. Shall we tell them of the power of your wit, dressed with designs that enchant and encapture all around you?

It is said that you cast a spell
on one and all when they
behold the first glimpse of
you. They simply can't look
away. Many wonder, about
and to themselves, what magic
spells lie at your disposal. Shall
we tell them in the power of
your face, blessed with features
that enthrall and enrapture all
around you?



• VISAGE OF ENAMOUR •





VISAGE OF ENAMOUR



Sachana

PASSAGE TO PERFECTION

D.M.O.
9.21.2



Sadhana
DESIGNERS

D.NO.
8213



It is said that you can't spell go-one and all. When they behold the first glimpse of you... they simply can't look away. Many wonder, stand and to themselves, what magic spells lie at your disposal. And we tell them it is the power of true love, blessed with designs that enchant and amaze you all around you!

PASSAGE TO PERFECTION



 Sadhana

PICTURE OF MAJESTY



WHY SHOULD ROHASY BE DRESSED IN ANYTHING SHORT OF REGAL? WHEN YOU CARRY YOURSELF WITH GRACE AND POISE, WHEN THE WORLD OWNS TO YOUR COMMAND, WHEN A WHOLE KINGDOM OF BESOTTED MEN ARE READY TO GO TO BATTLE FOR YOU, ALL YOU NEED IS THIS BREATHWORTHY DRESS. OUR EXQUISITE TOUCH MAKES THE PICTURE SHINY PERFECT.

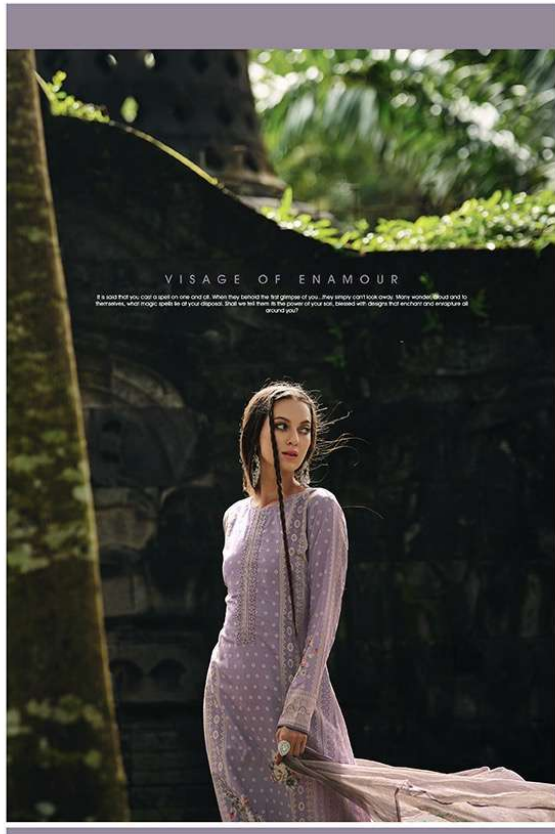


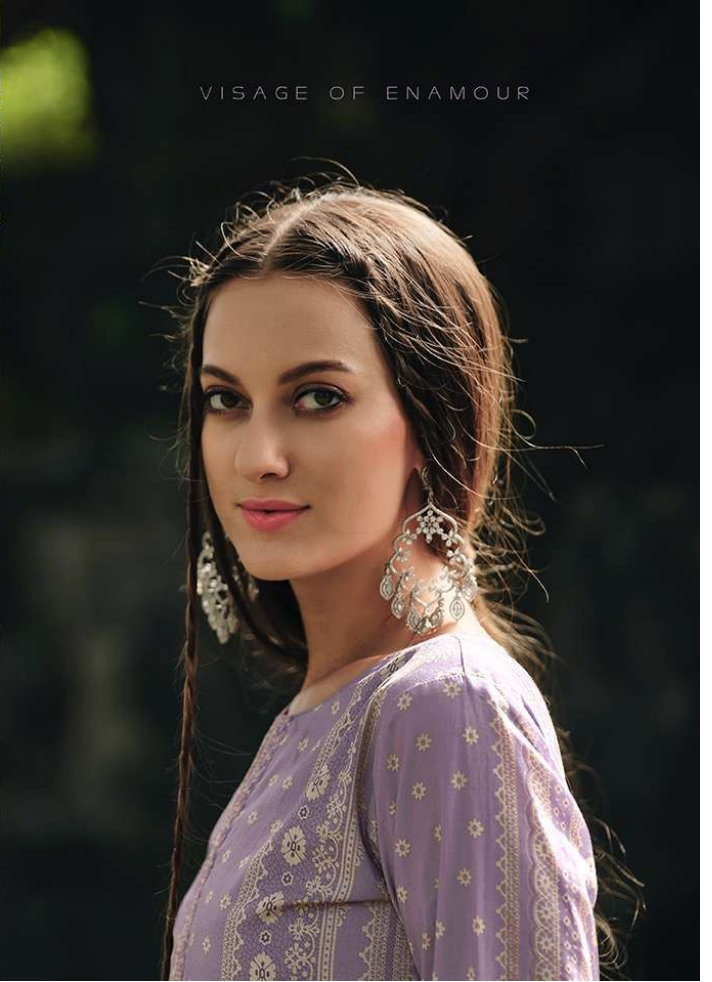
PICTURE OF MAJESTY



WHY SHOULD ROYALTY BE DRESSED IN
ANYTHING SHORT OF REGAL WHEN YOU CARRY YOURSELF WITH GRACE AND
POISE, WHEN THE WORLD BOWS TO YOUR
COMMAND, WHEN A WHOLE KINGDOM OF BESOTTEN MEN ARE READY TO
GO TO BATTLE FOR YOU, ALL YOU NEED IS THIS BREATHTAKING
DRESS. OUR EXQUISITE TOUCH MAKES THE PICTURE SIMPLY
PERFECT.









If is said that you cast a spell on one and all. When they behold the fair glimpse of you - they simply can't look away. Alas! revolves about and to themselves, what magic spells lie of your clothes! Sad! we tell them to the sorrow of your lot. Blessed with designs that enchant and enrapture all around you!



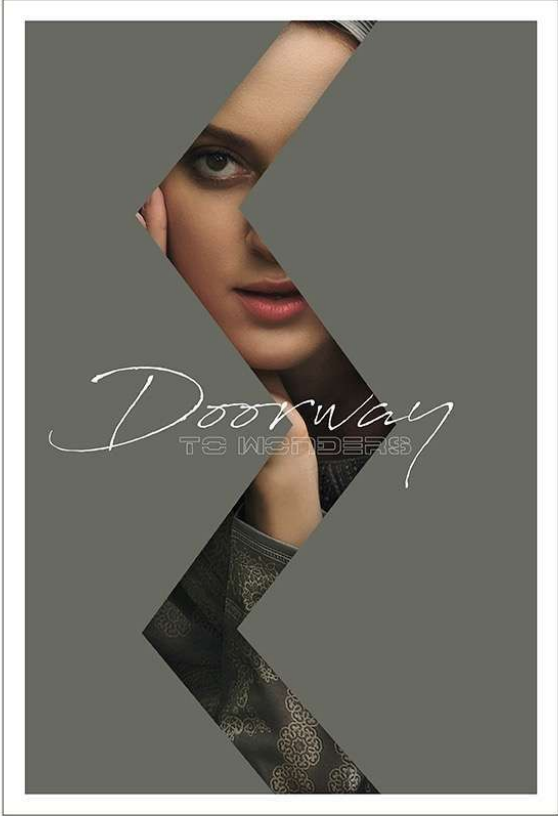
VISAGE OF ENAMOUR

It is said that you cast a spell on one and all. When they behold the first glimpse of you...they simply come back away. Many wonder, about and to themselves, what magic spells lie at your disposal. Shall we let them be the power of your spell (blessed with thoughts that enchant and enrapture all around you)?











VISAGE OF ENAMOUR

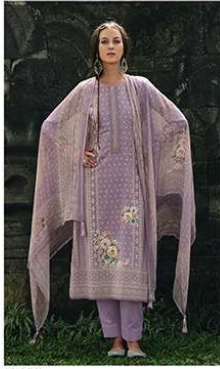
If a girl that you cast a spell on one and all, when they behold the first glimpse of you, they simply can't look away. Many moan, about and to themselves, what magic, spell is at your disposal. Soon we will learn of the power of your cast, blessed with designs that enchants and enrapture all around you!



VISAGE OF ENAMOUR



There are some garments so intricately crafted, so gloriously made, so magnificently designed and so finely created that they transcend into the special realm. These pieces are not beyond the realm of human understanding and comprehension. What happens do they imbue your being with Adorn yourself in the top and find out!



5206



5207



5210



5211



5208



5209



5212



5213