

A woman with long, dark, wavy hair is the central figure, looking over her shoulder towards the camera. She is wearing a teal and orange patterned dress with a sheer, flowing overlay. Her accessories include large, ornate gold earrings with teal stones and a matching ring. The background is a natural setting with a river and rocks. The brand name 'Jang Fashion' is in the top left, and 'Summer shy' is at the bottom.

Jang
FASHION

Summer shy

A woman with long, dark, wavy hair is the central figure, looking over her shoulder towards the camera. She is wearing a vibrant green dress with long sleeves and a matching shawl or dupatta featuring a pattern of orange, purple, and white. Her accessories include large, ornate gold earrings with turquoise stones and a matching ring. The background is a natural setting with a rocky riverbed and lush green foliage. In the top left corner, there is a gold-colored logo for 'Rang FASHION' with a decorative crown-like element above the word 'Rang'.

Rang
FASHION

Summer shuy



REVAMP YOUR WARDROBE
WITH A DASH OF GOLDEN
SPARK AND MATCHLESS
DESIGNS
THIS SEASON





REDEFINING GLAMOUR

D.NO.
1001



T R A D I T I O N A L

G I R L
—
—
—



D.NO. 1002 DREAMY DRAPES





Stylish elegance
EFFORTLESS SIMPLICITY OF BEAUTY



T I M E L E S S M A S T E R P I E C E

D.NO.
1003





NATURAL BEAUTY

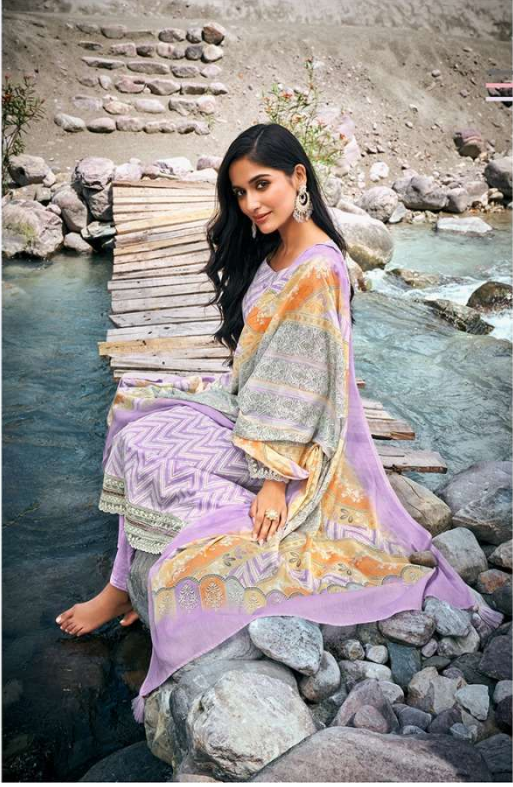
D.NO.
1005





D.NO.
1004

C E L E B R A T E M O M E N T S



T R A D I T I O N A L S A G A

D.NO.
1008

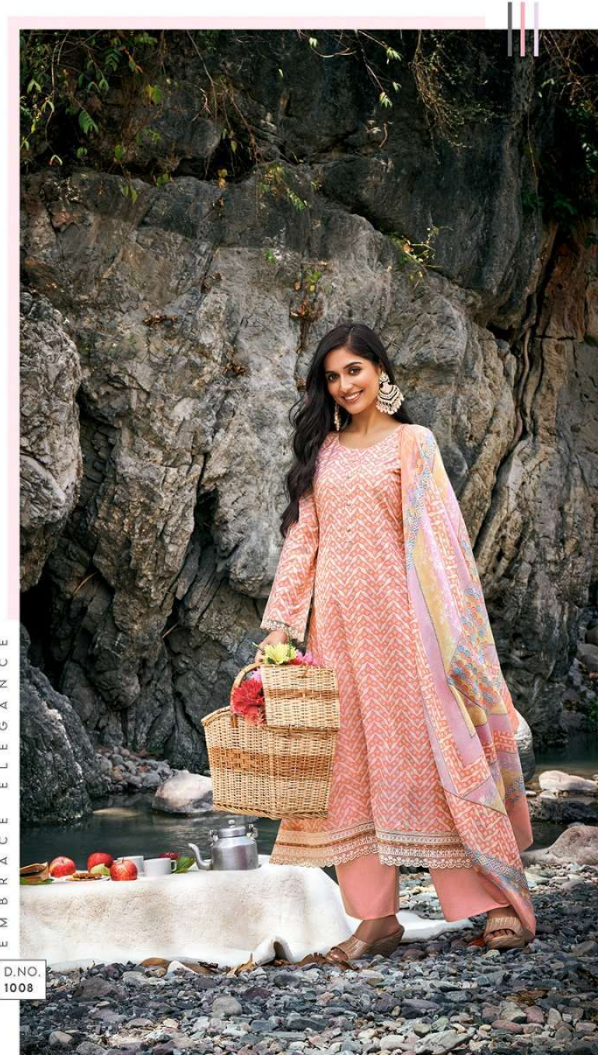




GRACE AND GRANDEUR

D.NO.
1006





EMBRACE ELEGANCE

D.NO.
1008





Summer sky

