

**S**  
sheeshmahal®



#S-1320-B

**Top- GEORGETTE**  
**Bottom/Iner- SANTOON**  
**Dupatta- NAZMEEN**

**WASHING INSTRUCTIONS**  
DO NOT USE ANY TYPE OF BLEACH OR OTHER BLEACHING AGENTS  
BEFORE DRYING. COLORED FABRIC SHOULD BE SOAKED IN WATER  
ALL COMPONENTS SEPARATELY FOR 15 MINUTES  
DO NOT KEEP ANY FABRIC IN CONTACT WITH RUBBER TUBES OR HARSH  
HIGH-COLOURED AND WHITE FABRICS SEPARATELY  
IRON CLOTHES AT MODERATE TEMPERATURE. DO NOT DRY FABRIC IN DIRECT SUNLIGHT  
(EXTRA LACES, HANGINGS AND ACCESSORIES ARE NOT INCLUDED)



**S**  
sheeshmahal®



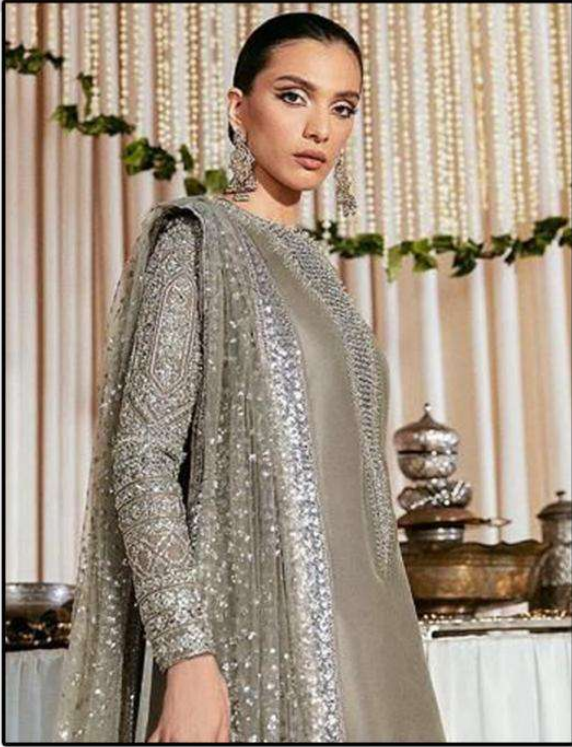
#S-1320-B

**Top- GEORGETTE**  
**Bottom/Iner- SANTOON**  
**Dupatta- NAZMEEN**

**WASHING INSTRUCTIONS**  
DO NOT USE ANY TYPE OF BLEACH OR OTHER BLEACHING AGENTS  
BEFORE DRYING OR WASHING SHOULD BE WASHED IN WATER  
ALL COMPONENTS SEPARATELY FOR 15 MINUTES  
DO NOT DRY IN DIRECT SUNLIGHT TO AVOID COLOR LOSS  
DO NOT IRON. IF TINTED IRON IN ORDER TO AVOID COLOR LOSS  
HIGH COLORED AND WHITE FABRICS SEPARATELY  
IRON CLOTHES AT MODERATE TEMPERATURE DO NOT DRY FABRIC IN DIRECT SUNLIGHT  
EXTRA LACES, HANGINGS AND ACCESSORIES ARE NOT INCLUDED



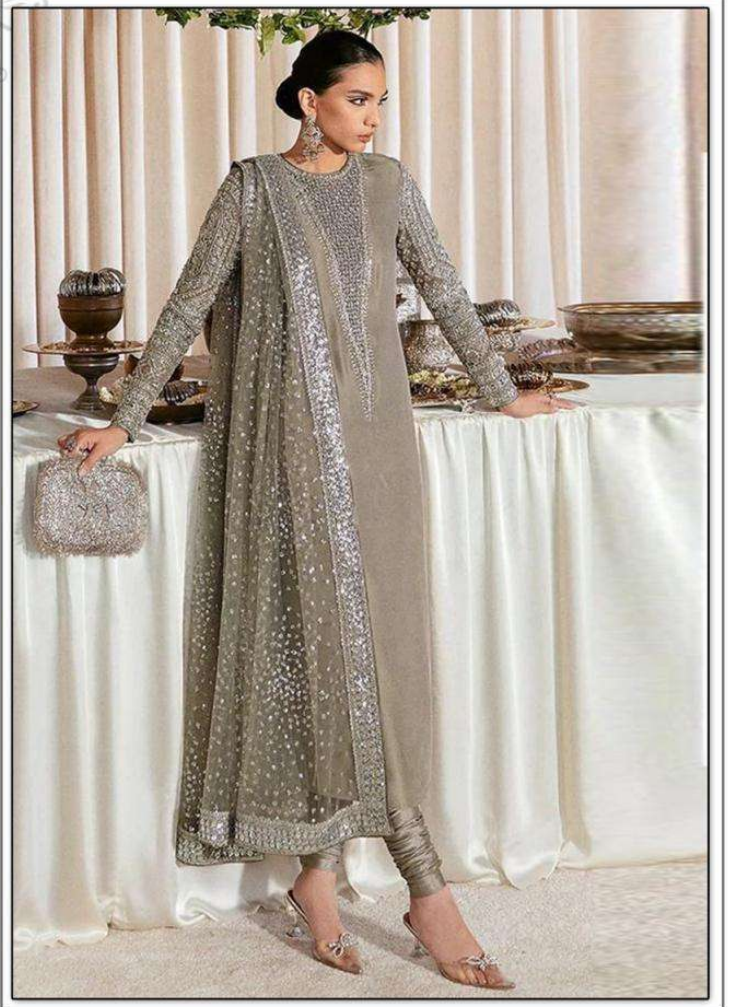
**S**  
sheeshmahal®



#S-1320-A

**Top- GEORGETTE**  
**Bottom/Iner- SANTOON**  
**Dupatta- NAZMEEN**

**WASHING INSTRUCTIONS**  
DO NOT USE ANY TYPE OF BLEACH OR OTHER BLEACHING AGENTS  
BEFORE DRYING OR WASHING SHOULD BE SOAKED IN WATER  
ALL COMPONENTS SEPARATELY FOR 15 MINUTES  
DO NOT USE HOT WATER. IN TRIMMED ITEM IN ORDER TO AVOID COP MARKS  
HIGH COLOURED AND WHITE FABRIC SEPARATELY  
IRON CLOTHES AT MEDIUM TEMPERATURE DO NOT DRY FABRIC IN DIRECT SUNLIGHT  
(EXTRA LACES/HANDKERCHIEFS AND ACCESSORIES ARE NOT INCLUDED)



**S**  
sheeshmahal®



#S-1320-D

**Top- GEORGETTE**  
**Bottom/Iner- SANTOON**  
**Dupatta- NAZMEEN**

**WASHING INSTRUCTIONS**  
DO NOT USE ANY TYPE OF BLEACH OR STAIN REMOVING CHEMICALS  
BEFORE DYEING COLOURS/FABRIC SHOULD BE SOAKED IN WATER  
ALL COMPONENTS SEPARATELY FOR 15 MINUTES  
DO NOT KEEP ANY FABRIC IN TOUCH WITH INK OR TOXIC COLOURS (BLACK)  
HIGH COLOURED AND WHITE FABRICS SEPARATELY  
IRON CLOTHES AT MODERATE TEMPERATURE DO NOT DRY FABRIC IN DIRECT SUNLIGHT  
(EXTRA LACES/HANDKERCHIEFS AND ACCESSORIES ARE NOT INCLUDED)



**S**  
sheeshmahal®



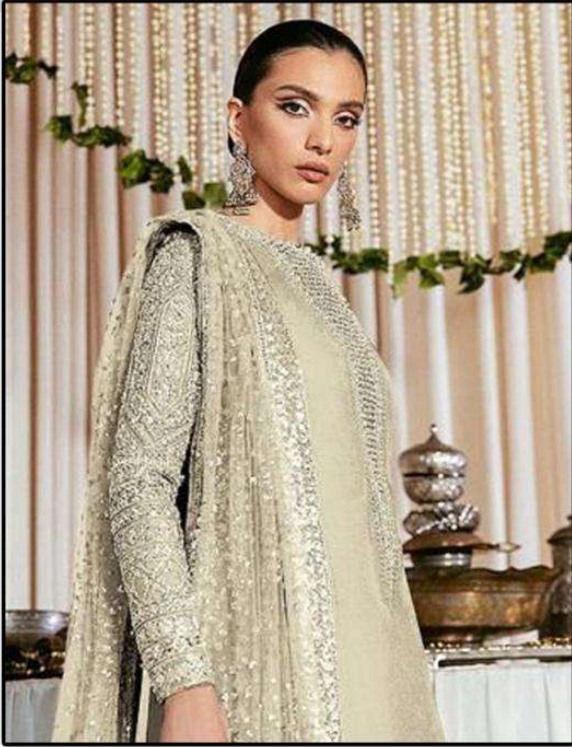
#S-1320-C

**Top- GEORGETTE**  
**Bottom/Iner- SANTOON**  
**Dupatta- NAZMEEN**

**WASHING INSTRUCTIONS**  
DO NOT USE ANY TYPE OF BLEACH OR OTHER BLEACHING AGENTS  
BEFORE DRYING. COLOURED FABRICS SHOULD BE SOAKED IN WATER  
ALL COMPONENTS SEPARATELY FOR 15 MINUTES  
DO NOT KEEP ANY FABRIC IN CONTACT WITH IRON OR STEEL TO AVOID COUP MARKS  
HIGH COLOURED AND WHITE FABRICS SEPARATELY  
IRON CLOTHES AT MODERATE TEMPERATURE DO NOT DRY FABRIC IN DIRECT SUNLIGHT  
(EXTRA LACES, HANGINGS AND ACCESSORIES ARE NOT INCLUDED)



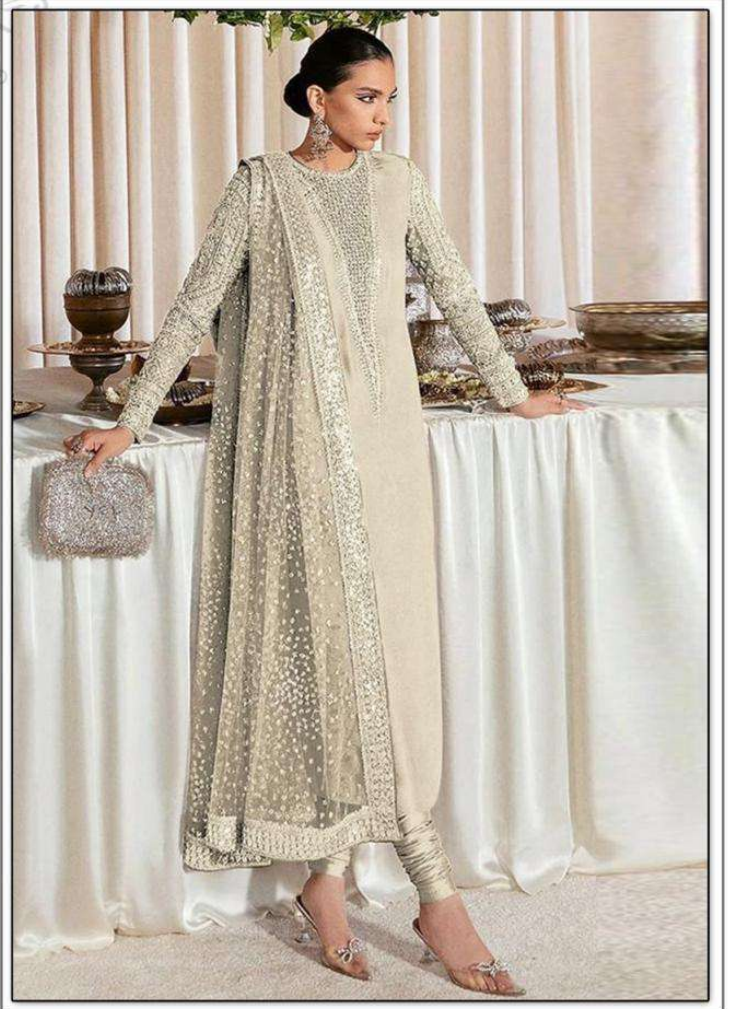
**S**  
sheeshmahal®



#S-1320-F

**Top- GEORGETTE**  
**Bottom/Iner- SANTOON**  
**Dupatta- NAZMEEN**

**WASHING INSTRUCTIONS**  
DO NOT USE ANY TYPE OF BLEACH OR OTHER BLEACHING AGENTS  
BEFORE DYEING OR COLORING SHOULD BE DONE IN WATER  
ALL COMPONENTS WASHED FOR 15 MINUTES  
DO NOT USE HOT WATER. IN TRIMMED ITEM IN ORDER TO AVOID TOP UNDO  
HIGH COLORED AND WHITE FABRIC SEPARATELY  
IRON CLOTHES AT MODERATE TEMPERATURE DO NOT DRY FABRIC IN DIRECT SUNLIGHT  
(EXTRA LACES, HANGINGS AND ACCESSORIES ARE NOT INCLUDED)



**S**  
sheeshmahal®



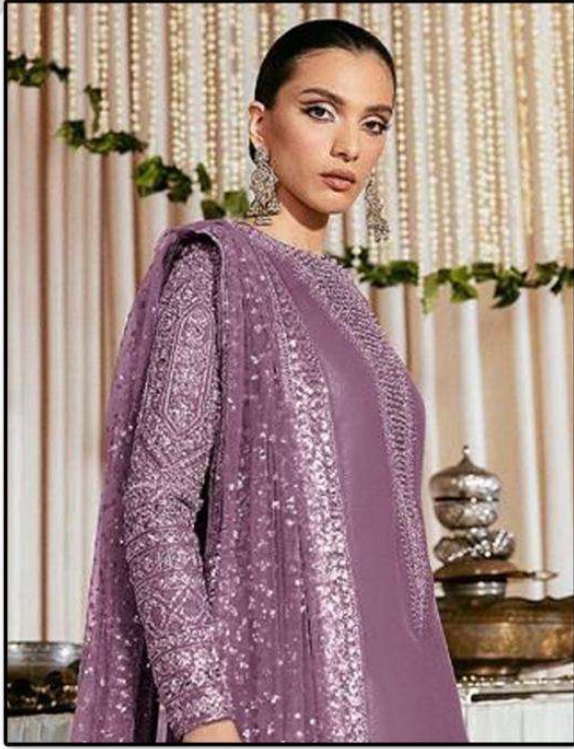
#S-1320-G

**Top- GEORGETTE**  
**Bottom/Iner- SANTOON**  
**Dupatta- NAZMEEN**

**WASHING INSTRUCTIONS**  
DO NOT USE ANY TYPE OF BLEACH OR CHLORINE BLEACHES  
BEFORE DRYING COLORING FABRIC SHOULD BE SOAKED IN WATER  
ALL COMPONENTS WASHED FOR 15 MINUTES  
DO NOT DRY IN DIRECT SUNLIGHT TO AVOID COLOR LOSS  
DO NOT IRON IN DIRECT SUNLIGHT TO AVOID COLOR LOSS  
HIGH COLORED AND WHITE FABRICS SEPARATELY  
IRON CLOTHES AT MODERATE TEMPERATURE DO NOT DRY FABRIC IN DIRECT SUNLIGHT  
EXTRA LACES HANGINGS AND ACCESSORIES ARE NOT INCLUDED



**S**  
sheeshmahal®



#S-1320-E

**Top- GEORGETTE**  
**Bottom/Iner- SANTOON**  
**Dupatta- NAZMEEN**

**WASHING INSTRUCTIONS**  
DO NOT USE ANY TYPE OF BLEACH OR OTHER BLEACHING AGENTS  
BEFORE DRYING. COLORED FABRICS SHOULD BE SOAKED IN WATER  
ALL COMPONENTS SEPARATELY FOR 15 MINUTES  
DO NOT KEEP ANY FABRIC IN CONTACT WITH DIRECT SUNLIGHT OR HARSH  
HIGH-COLOURED AND WHITE FABRICS SEPARATELY  
IRON CLOTHES AT MODERATE TEMPERATURE. DO NOT DRY FABRIC IN DIRECT SUNLIGHT  
(EXTRA LACES, HANGINGS AND ACCESSORIES ARE NOT INCLUDED)







  
sheeshmahal®

**TOP- GEORGETTE**  
**BOTTOM/INER - SANTOON**  
**DUPATTA - NET**



#S-1320 A

#S-1320 B

#S-1320 C

#S-1320 D

#S-1320 E

#S-1320 F

#S-1320 G

