



*be*  
**RICH**

*Vol 3*





*be*  
**RICH**

*Vol 3*





SWISH®  
•INSPIRED BY FASHION•

*be*

# RICH

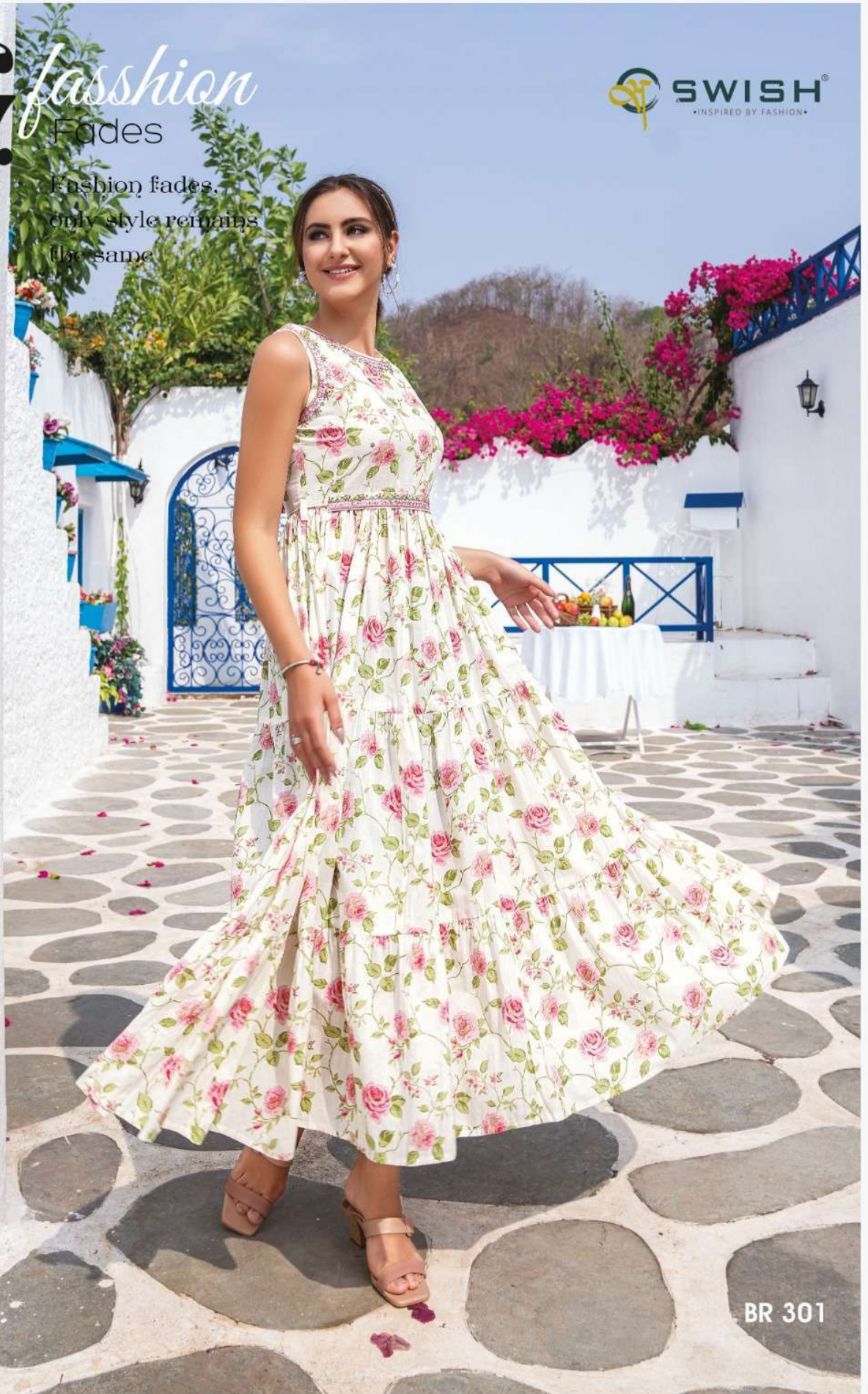
*Vol.3*



# fashion

Fades

Fashion fades,  
only style remains  
the same.



BR 301





BR 303



# Extreme Beauty

leave the ordinary behind & go stylish



BR 302





# R Mood Effect

Special occasions  
need special attires





**SWISH**  
INSPIRED BY FASHION

Being  
*Classy*

Being classy  
isn't a choice  
Its a lifestyle

BR 304



**SWISH**<sup>®</sup>  
INSPIRED BY FASHION

Magical  
*mystery*

Style is a way to say  
who you are without  
having to speak



BR 305

A woman with her hair in a ponytail is smiling and posing on a patio. She is wearing a black sleeveless dress with a vibrant floral pattern in shades of red, green, and gold. The dress has a full, tiered skirt. She is also wearing silver strappy high-heeled sandals. The patio has a blue metal railing and a white chair. In the background, there are white walls, a blue archway, and lush greenery with bright pink flowers. The sky is clear and blue.

**SWISH**  
INSPIRED BY FASHION

**BR 306**

**T**rend  
Alert  
Flow with  
fresh trends





**BR 301**



**BR 302**



**BR 303**



**BR 304**



**BR 305**



**BR 306**



**BR 307**



 **SWISH**<sup>®</sup>  
INSPIRED BY FASHION

ARROGANT

*Style*

Being classy  
isn't a choice  
Its a lifestyle



BR 307