

DRESSTIVE[®]

◆ ANGELICA ◆



DRESSTIVE[®]

◆ ANGELICA ◆



DRESSTIVE® | DRS1401





DRESSITIVE | DRS1401

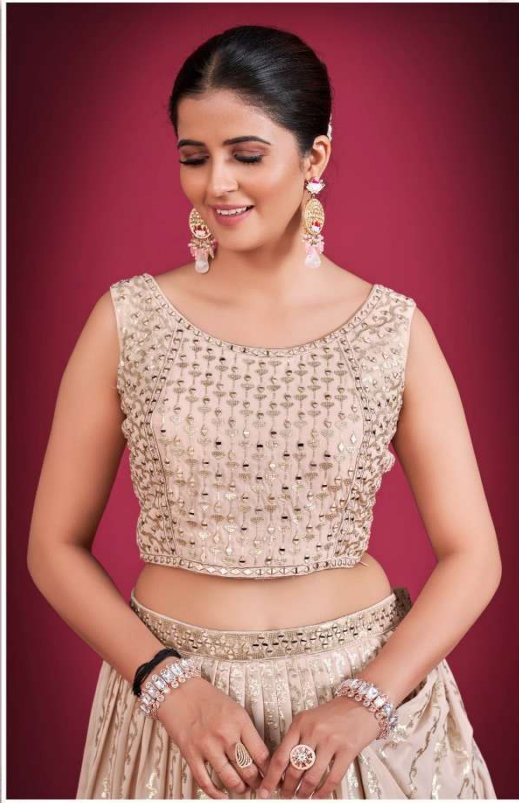


DRESSTIVE® | DRS1402

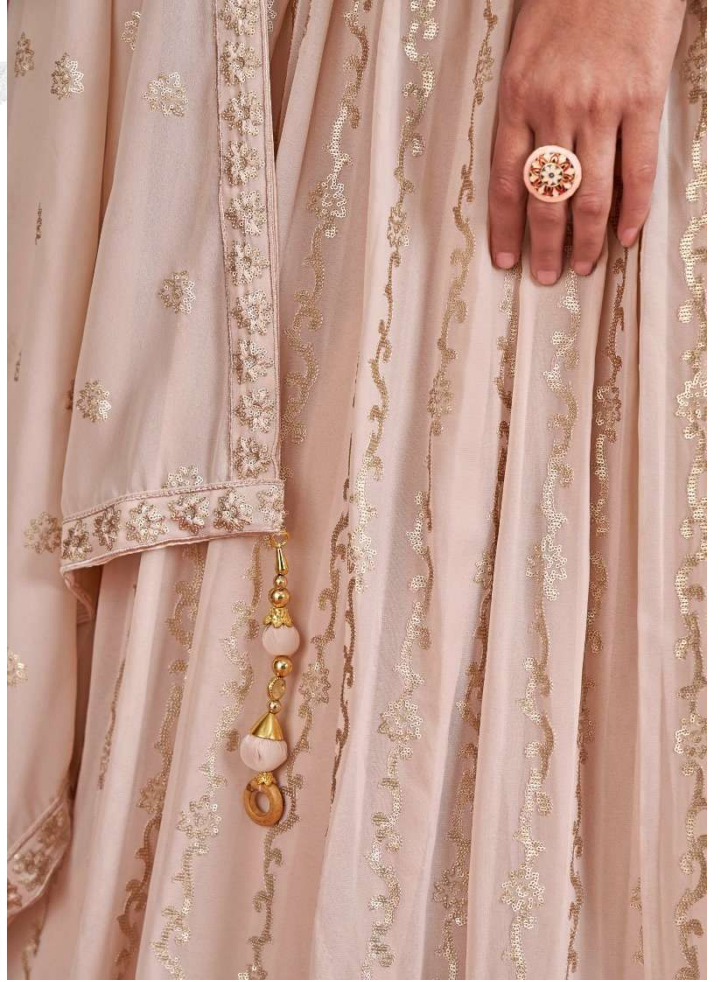




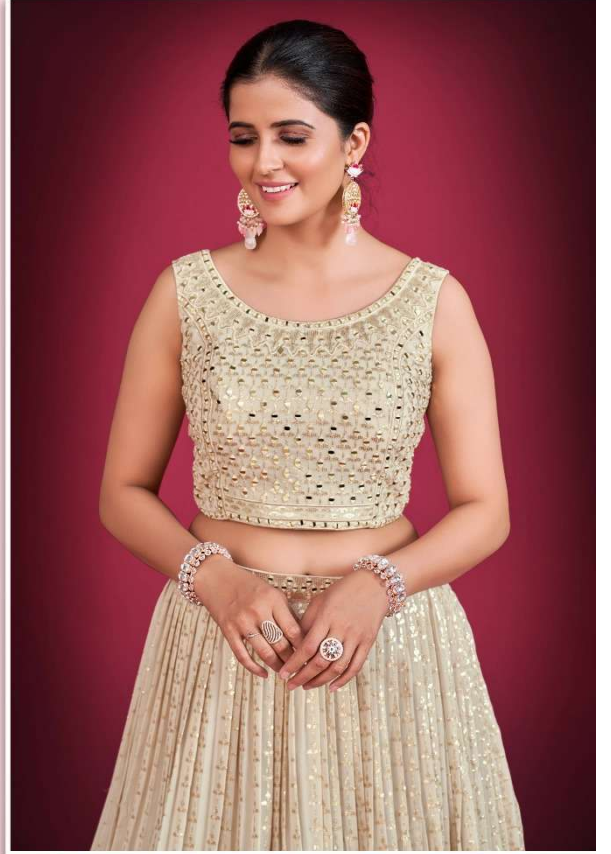
DRESSTIVE® | DRS1403



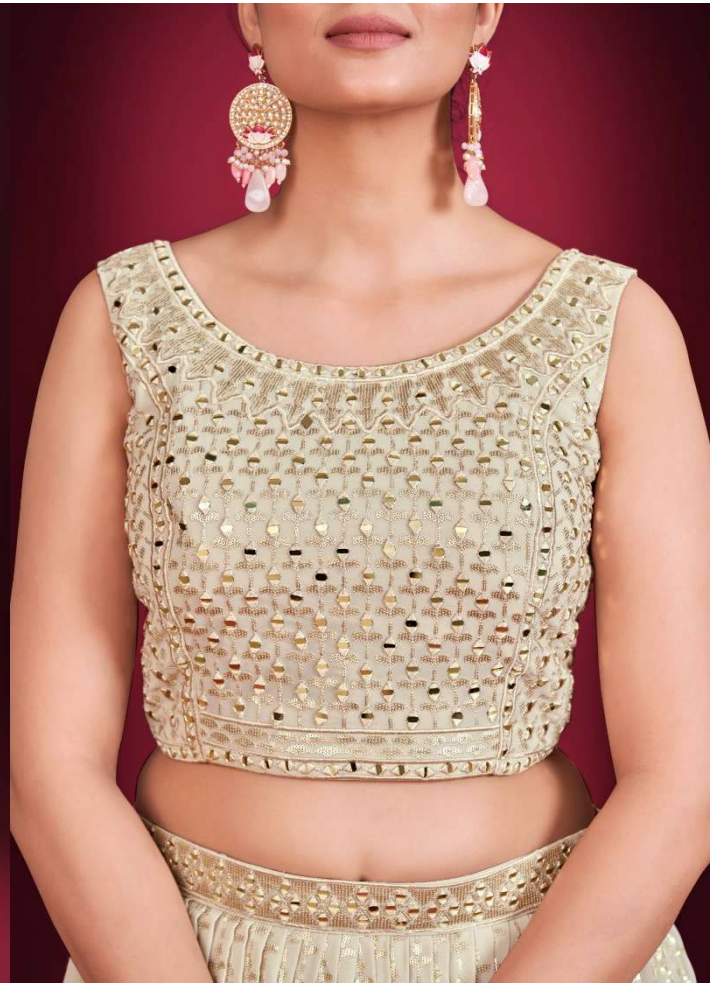
DRESSTIVE® | DRS1403



DRESSTIVE® | DRS1404



DRESSTIVE® | DRS1404





DRESSTIVE | DRS1405



DRESSTIVE® | DRS1405



DRESSTIVE®



DRS1401

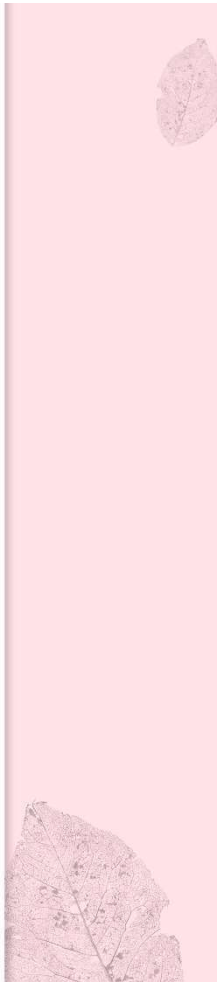
DRS1402

DRS1403



DRS1404

DRS1405



DRESSTIVE[®]

ANGELICA



SKU	MAIN COLOR	BLOUSE FABRIC	LEHENGA FABRIC	DUPATTA FABRIC	SIZE	WORK	PRICE
DRS1401	Lilac	Georgette	Georgette	Georgette	Full Stitched (40, 42)	Sequins , Mirror	5310 + 12% GST + SHIPPING
DRS1402	Pista	Georgette	Georgette	Georgette	Full Stitched (40, 42)	Sequins , Mirror	5310 + 12% GST + SHIPPING
DRS1403	Peach	Georgette	Georgette	Georgette	Full Stitched (40, 42)	Sequins , Mirror	5310 + 12% GST + SHIPPING
DRS1404	Cream	Georgette	Georgette	Georgette	Full Stitched (40, 42)	Sequins , Mirror	5310 + 12% GST + SHIPPING
DRS1405	Light Blue	Georgette	Georgette	Georgette	Full Stitched (40, 42)	Sequins , Mirror	5310 + 12% GST + SHIPPING

TOTAL DESIGNS: 5 PCS | AVERAGE COST : 5310/-

TOTAL COST : Rs. 26550/-