

A woman with long dark hair is wearing a purple kurta with intricate white embroidery. The embroidery features a large central floral motif and smaller patterns along the neckline and sleeves. The sleeves are long and flared with elasticated cuffs. She is also wearing matching purple pants. Her accessories include large pearl earrings, a bracelet, and rings. The background shows a wooden door with carvings.

 **Vamika Nx**
VINTAGE

A woman with long dark hair is wearing a purple kurta with intricate white embroidery. The embroidery features a large central floral motif and smaller patterns around the neckline and sleeves. The sleeves are long and flared with elasticated cuffs. She is also wearing matching purple pants. Her accessories include large pearl earrings, a bracelet, and rings. The background shows a wooden door with carvings.

 **Vamika Nx**
VINTAGE



903







901



902



905



906



903



904

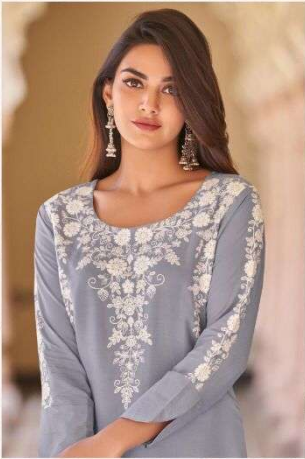
 **Vamika 12x**
VINTAGE





Vamika Dlx

906





905





901





904







 Vamika Dx

VINTAGE



Vamika Dlx
902

