

maisha™

Rosemeen



maisha™



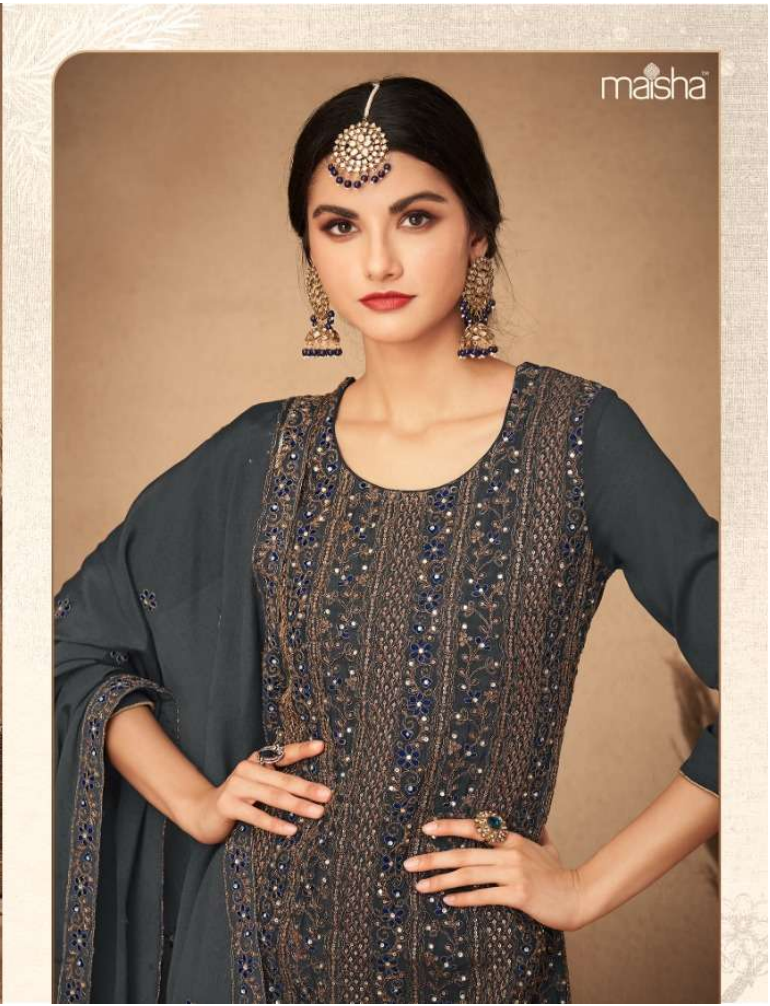


A woman with dark hair is seated, wearing a vibrant green outfit with intricate gold and teal embroidery. She is adorned with large, ornate gold earrings featuring teal beads and a matching forehead ornament. The background is a soft, neutral-toned wall with a vase of white flowers visible on the left. The brand name 'maisha' is printed in the top right corner.

maisha™

Rosemeen





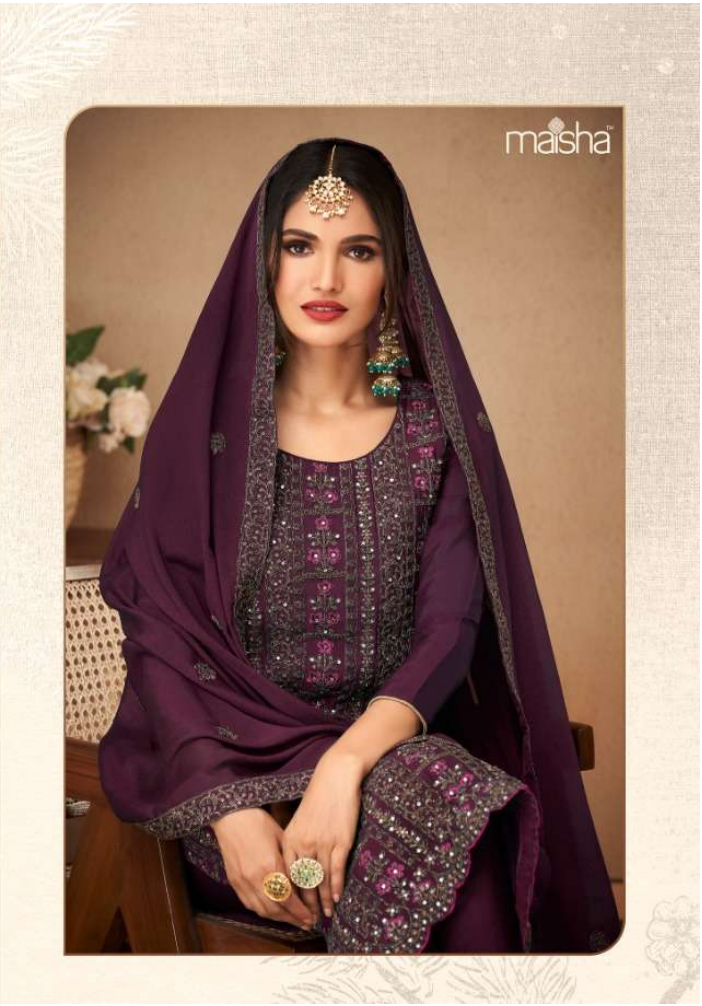








maisha™



maisha



Rosemeen



12019



12020



12021



12022



12023



12024