



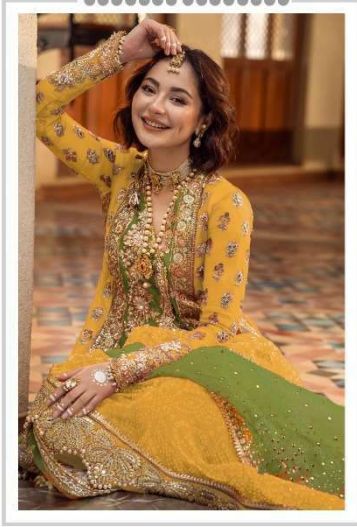
#R-548-D



TOP- ORGENZA WORK WITH EMBROIDERY
BOTTOM-DULL SANTOON
DUPATTA - ORGENZA WORK WITH EMBROIDERY

Ⓟ DRY CLEAN ONLY.
ⓧ DO NOT USE ANY BLEACH OR STAIN REMOVING CHEMICAL.
Ⓛ IRON THE FABRIC AT MODERATE TEMPERATURE.

Ramsha®
548-NX



Ramsha®
548-NX



#R-548-A



#R-548-B



#R-548-C



#R-548-D



#R-548-D



TOP- ORGENZA WORK WITH EMBROIDERY
BOTTOM-DULL SANTOON
DUPATTA - ORGENZA WORK WITH EMBROIDERY

Ⓟ DRY CLEAN ONLY.
ⓧ DO NOT USE ANY BLEACH OR STAIN REMOVING CHEMICAL.
Ⓡ IRON THE FABRIC AT MODERATE TEMPERATURE.



#R-548-B



TOP- ORGENZA WORK WITH EMBROIDERY
BOTTOM-DULL SANTOON
DUPATTA - ORGENZA WORK WITH EMBROIDERY

Ⓟ DRY CLEAN ONLY.
ⓧ DO NOT USE ANY BLEACH OR STAIN REMOVING CHEMICAL.
☎ IRON THE FABRIC AT MODERATE TEMPERATURE.



#R-548-A



TOP- ORGENZA WORK WITH EMBROIDERY
BOTTOM-DULL SANTOON
DUPATTA - ORGENZA WORK WITH EMBROIDERY

- Ⓟ DRY CLEAN ONLY.
- ⓧ DO NOT USE ANY BLEACH OR STAIN REMOVING CHEMICAL.
- ☎ IRON THE FABRIC AT MODERATE TEMPERATURE.



#R-548-C



TOP- ORGENZA WORK WITH EMBROIDERY
BOTTOM-DULL SANTOON
DUPATTA - ORGENZA WORK WITH EMBROIDERY

- Ⓟ DRY CLEAN ONLY.
- ⓧ DO NOT USE ANY BLEACH OR STAIN REMOVING CHEMICAL.
- ☎ IRON THE FABRIC AT MODERATE TEMPERATURE.

