

# ALEENA

VOL-1

आाawiyd®



# ALEENA

VOL-1

आाawiyd®





GO

FORTH & BE FABULOUS!

2112

Aaawiyaa®



Aaawiya®



BE

YOUR OWN LABEL

2113



GO

FORTH & BE FABULOUS!

DESIGNER: ANITA DOLY. PHOTOGRAPHY: ANITA DOLY. STYLING: ANITA DOLY. MAKEUP: ANITA DOLY. HAIR: ANITA DOLY. ACCESSORIES: ANITA DOLY. LEHENGA: ANITA DOLY. DUPATTA: ANITA DOLY. SHOES: ANITA DOLY. JEWELRY: ANITA DOLY. LOCATION: ANITA DOLY. DATE: ANITA DOLY. TIME: ANITA DOLY. WEATHER: ANITA DOLY. MOOD: ANITA DOLY. VIBES: ANITA DOLY. FEELINGS: ANITA DOLY. THOUGHTS: ANITA DOLY. DREAMS: ANITA DOLY. WISHES: ANITA DOLY. HOPE: ANITA DOLY. FAITH: ANITA DOLY. LOVE: ANITA DOLY. PASSION: ANITA DOLY. DEDICATION: ANITA DOLY. COMMITMENT: ANITA DOLY. RESPECT: ANITA DOLY. HONOR: ANITA DOLY. GLORY: ANITA DOLY. SUCCESS: ANITA DOLY. PROSPERITY: ANITA DOLY. WEALTH: ANITA DOLY. POWER: ANITA DOLY. INFLUENCE: ANITA DOLY. REPUTATION: ANITA DOLY. STATUS: ANITA DOLY. CREDIT: ANITA DOLY. RECOGNITION: ANITA DOLY. APPRECIATION: ANITA DOLY. GRATITUDE: ANITA DOLY. THANKS: ANITA DOLY. LOVE: ANITA DOLY. RESPECT: ANITA DOLY. HONOR: ANITA DOLY. GLORY: ANITA DOLY. SUCCESS: ANITA DOLY. PROSPERITY: ANITA DOLY. WEALTH: ANITA DOLY. POWER: ANITA DOLY. INFLUENCE: ANITA DOLY. REPUTATION: ANITA DOLY. STATUS: ANITA DOLY. CREDIT: ANITA DOLY. RECOGNITION: ANITA DOLY. APPRECIATION: ANITA DOLY. GRATITUDE: ANITA DOLY. THANKS: ANITA DOLY.

2112



Aaawiya®



Aaawiya®

BE

YOUR OWN LABEL

2113





Aaawiya®



YOU

SHOULD ALWAYS FEEL PRETTY

2114

आaawiya®

YOU

SHOULD ALWAYS  
FEEL PRETTY  
2114





आाawiya®



2111



2112



2113



2114



2115

ALEENA  
VOL-1

आाawiya®



SMILES

ARE ALWAYS IN FASHION!

2115



WEIGHT - 1.5 KG

SKU	MAIN COLOR	LEHENGA FABRIC	BLOUSE FABRIC	DUPATTA FABRIC	DESCRIPTION
2111	PARPAL	CHINON CROCHET	CHINON CROCHET	CHINON CROCHET	DIGITAL PRINT & CORCHET WORK
2112	PEACH	CHINON CROCHET	CHINON CROCHET	CHINON CROCHET	DIGITAL PRINT & CORCHET WORK
2113	BLUE	CHINON CROCHET	CHINON CROCHET	CHINON CROCHET	DIGITAL PRINT & CORCHET WORK
2114	BLUE	CHINON CROCHET	CHINON CROCHET	CHINON CROCHET	DIGITAL PRINT & CORCHET WORK
2115	BLUE	CHINON CROCHET	CHINON CROCHET	CHINON CROCHET	DIGITAL PRINT & CORCHET WORK

- 1) LEHENGA & BLOUSE WORK:- DIGITAL PRINT & CORCHET
- 2) DUPATAA WORK:- DIGITAL PRINT & CORCHET WITH TASSELS
- 3) LEHENGA SEMI-STICH WITH ART SILK INNER & CAN-CAN WITH CANVAS
- 4) LEHENGA LENGTH 42" & WAIST 44"
- 5) LEHENGA FLAIR - 4 MTR & BLOUSE 1. MTR & DUPATTA LENGTH 2.3 MTR

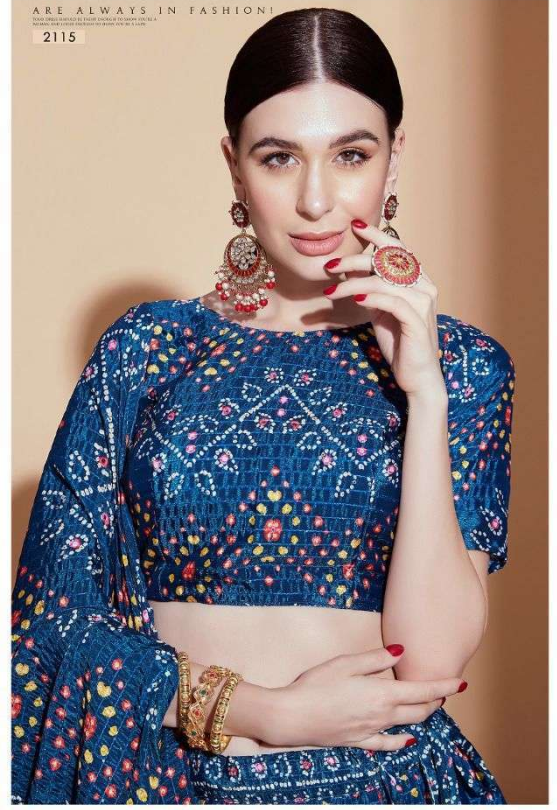
आaawiyā®



SMILES

ARE ALWAYS IN FASHION!

2115





Aaawiya®

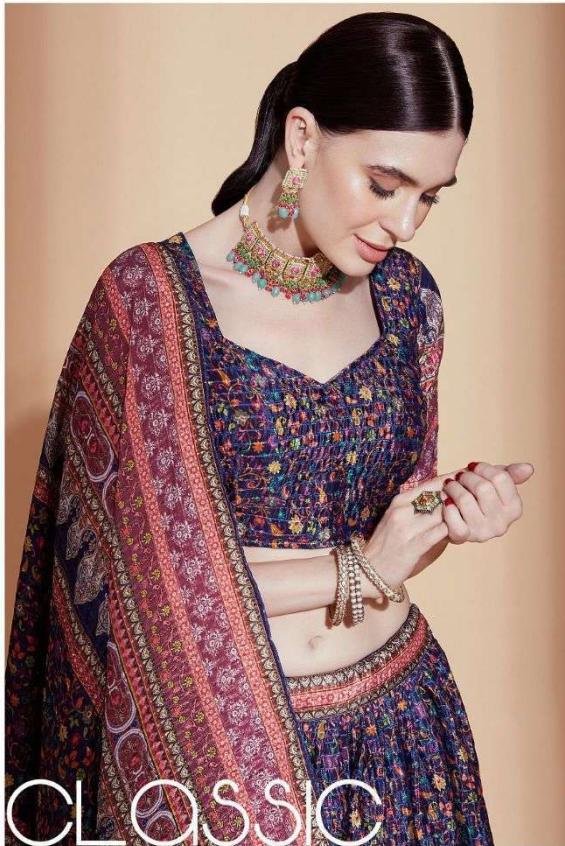


CLASSIC

NEVER GOES OUT OF STYLE

2111

आaawiya®



CLASSIC

NEVER GOES OUT OF STYLE

© 2011 AAWIYA. ALL RIGHTS RESERVED. PHOTOGRAPHY BY ANITA DIXIT. STYLING BY ANITA DIXIT. MAKEUP BY ANITA DIXIT. HAIR BY ANITA DIXIT.

2111

