



D.no-177-A



-:TOP:-

**Organza Embroidery with applique
and pearl Work**

-:BOTTAM/INNER:-

Santoon

-:DUPATTA:-

Organza Embroidery.



D.no-177-C



-:TOP:-

**Organza Embroidery with applique
and pearl Work**

-:BOTTAM/INNER:-

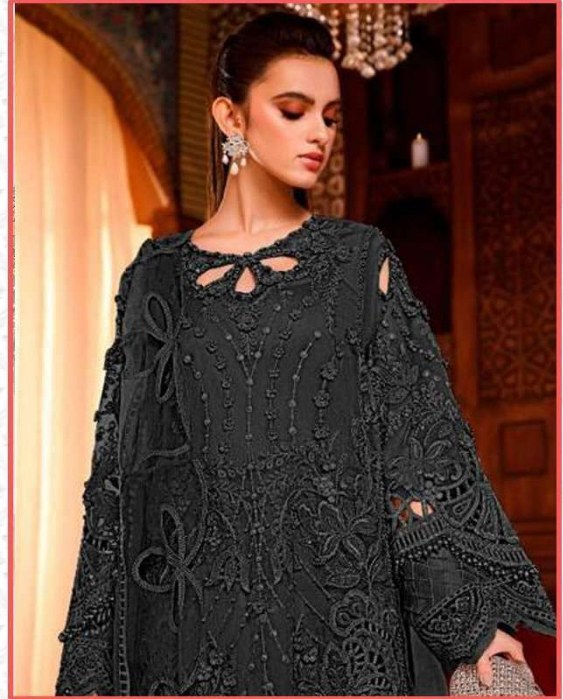
Santoon

-:DUPATTA:-

Organza Embroidery.



D.no-177-B



-:TOP:-

**Organza Embroidery with applique
and pearl Work**

-:BOTTAM/INNER:-

Santoon

-:DUPATTA:-

Organza Embroidery.



D.no-177-A



-:TOP:-

**Organza Embroidery with applique
and pearl Work**

-:BOTTAM/INNER:-

Santoon

-:DUPATTA:-

Organza Embroidery.



D.NO.177-A



D.NO.177-B



D.NO.177-C



FABRIC DETAILS

- :TOP:-
Organza Embroidery with applique and pearl Work
- :BOTTAM/INNER:-
Santoon
- :DUPATTA:-
Organza Embroidery.