

A close-up portrait of a woman with dark hair, wearing a green and gold saree. She is adorned with traditional Indian jewelry, including large gold earrings, multiple rings, and bangles. Her hands are positioned near her face, and she has white henna designs on her fingers and palm. The background is a solid blue color.

**RAJPATH™**  
"The Secret of Style"

**AARYA SILK**

**RAJPATH**<sup>TM</sup>  
"The Secret of Style"



131001

**RAJPATH™**  
"The Secret of Style"

# AARYA SILK



A close-up portrait of a woman with dark hair, wearing a green and gold saree. She is adorned with traditional Indian jewelry, including large gold earrings, multiple rings, and bangles. Her hands are positioned near her face, and she has white henna designs on her fingers and palm. The background is a solid blue color.

**RAJPATH™**  
"The Secret of Style"

**AARYA SILK**

**RAJPATH™**  
"The Secret of Style"

# Aarya Silk









131002



**RAJATH**<sup>TM</sup>  
"The Secret of Style"





**RAJPATH™**  
"The Secret of Style"





131002

**RAJPATH**<sup>TM</sup>  
"The Secret of Style"



131004

**RAJATH**<sup>TM</sup>  
"The Secret of Style"



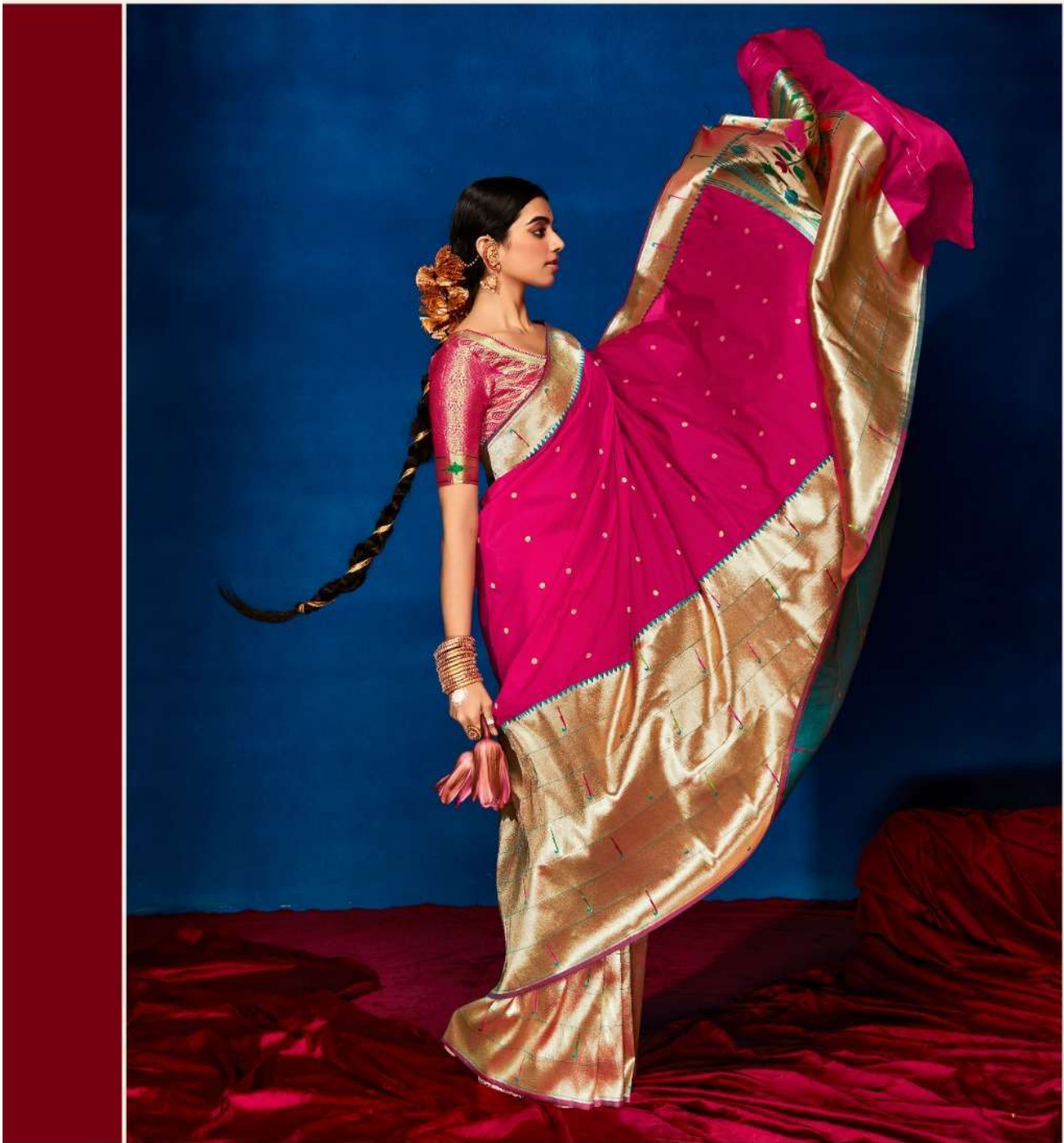
131003











The logo for Rajpath features a stylized crown or floral motif above the word "RAJPATH" in a bold, serif font. Below the brand name, the tagline "The Secret of Style" is written in a smaller, elegant script. A trademark symbol (TM) is positioned to the right of the brand name.

131005





**RAJPATH**<sup>TM</sup>  
"The Secret of Style"

131006

**RAJPATH™**  
"The Secret of Style"





131007



131001



131002



131003



131005



131006



131007







131008



131004



131008

**RAJPATH**<sup>TM</sup>  
"The Secret of Style"

# Aarya Silk

