



shraddha  
DESIGNER



*M*  
*prints*  
VOL-14

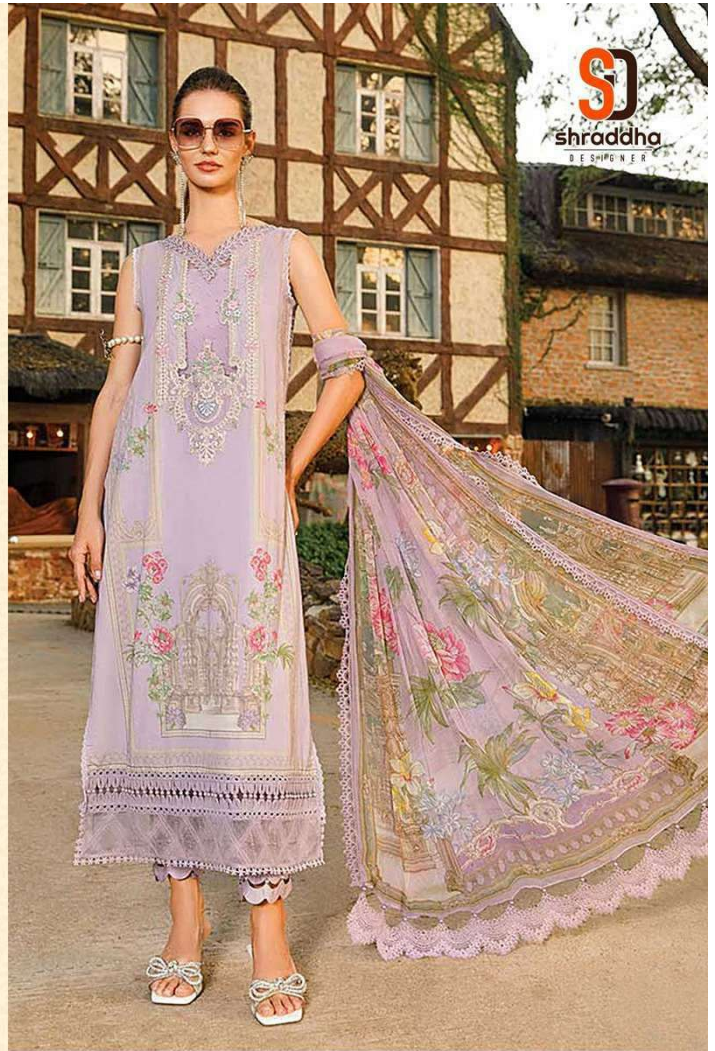
**SIMPLE SENSATION**

Quiet in its ecstatic tones, yet oozing style from a million miles, for silent observers with the loudest minds.

*M*prints  
VOL-14



SD#-14002



**S**  
shradha  
DESIGNERS

LADY OF LIGHT

Bright colours and bold patterns lift up the spirits. the world waits on you to let your hair down and start the evening in style.

SD#-14001

M  
prints  
VOL-14

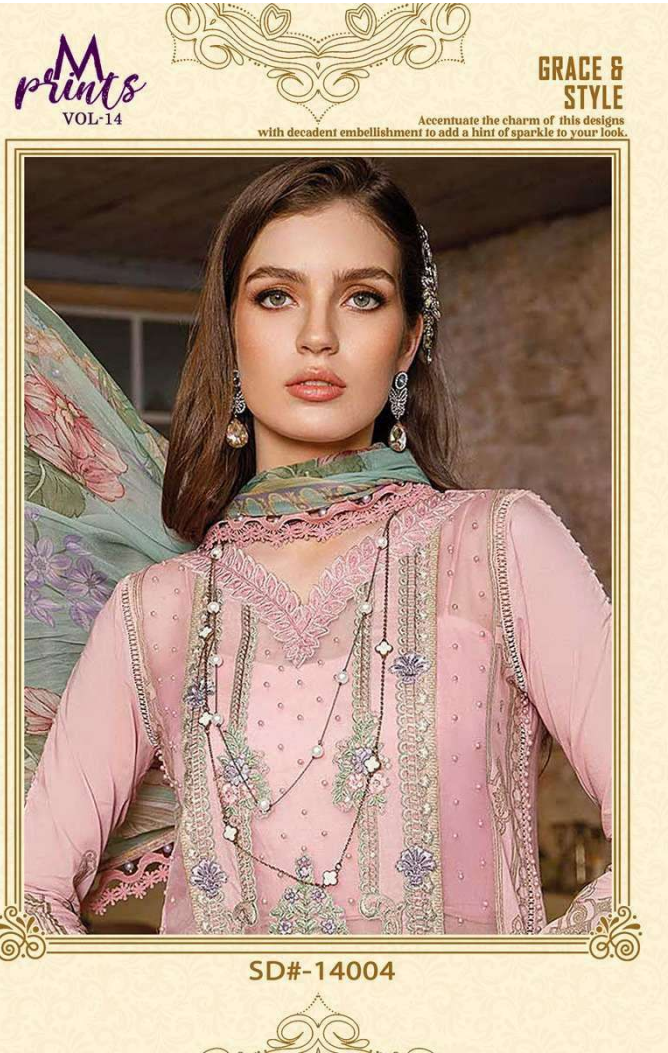


SD  
shraddha  
DESIGNER





**SD**  
**shreddha**  
DESIGNS



*M*  
*prints*  
VOL-14

**GRACE &  
STYLE**

Accentuate the charm of this designs  
with decadent embellishment to add a hint of sparkle to your look.

SD#-14004



shraddha  
DESIGNER



*M*  
*prints*  
VOL-14

# SAILING



shraddha  
DESIGNER

## SAILING



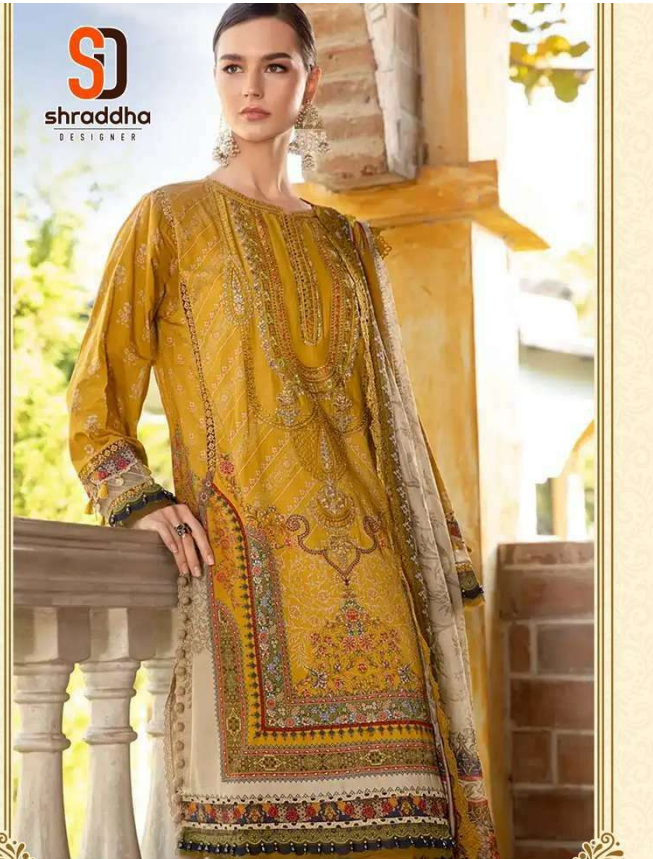
Showcasing excellent  
work and craftsmanship  
each one of these  
pieces will make  
for a class-apart  
style in your wardrobe

*M*  
prints  
VOL-14



shraddha  
DESIGNER



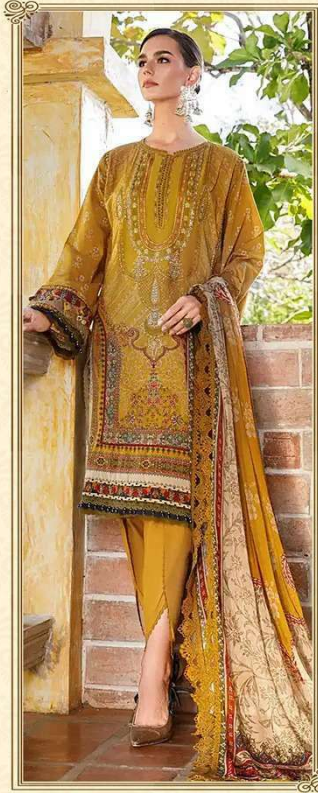


**STYLISH  
ELEGANCE**

**SD#-14003**

Accentuate the charm of this designs with decadent embellishment to add a hint of sparkle to your look.









**SD**  
shradha  
DESIGNER

# Beautiful Couture

THE ESSENCE OF GREAT FASHION

Casual dresses are selected with care so that they make any lady wearing it, look enchanting & adorable you have to do is follow the print which will be your new effect.

*M*  
*prints*  
VOL-14

