

A woman with long dark hair is the central figure, wearing a dark dress with a repeating diamond pattern of floral and geometric motifs. She is also wearing a black shawl draped over her left shoulder. Her accessories include a pearl headband and long, dangling earrings. She is holding a red fabric in her right hand. The background is a blurred outdoor setting with greenery and a building.

  
POONAM  
DESIGNER

Rivaz



UPDATE PASTE STYLE





BRIDE & BEAUTIFUL



POONAM  
DESIGNER

10006



10001



10002



10003



10007



10004



10005



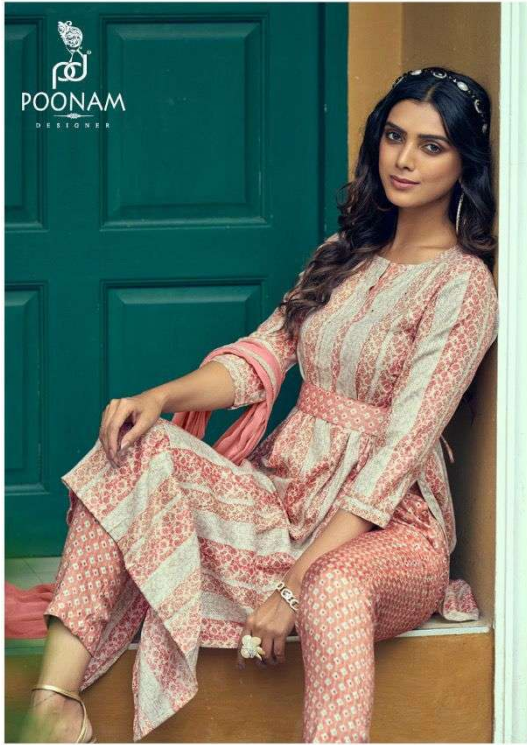
10006



10008

**M, L, XL, XXL**

UPDATE PASTE STYLE



POONAM  
DESIGNER

10008







10003



POONAM  
DASTANERY





10001





POONAM

I WANTED TO BE A  
CERTAIN KIND OF WOMAN.

**I BECAME THAT  
KIND OF WOMAN**

  
POONAM  
DESIGNER



  
THE TREND SETTER



A woman with long dark hair is the central figure, wearing a dark dress with a repeating diamond pattern of floral and geometric motifs. She is also wearing a black shawl draped over her left shoulder. Her accessories include a pearl headband and long, dangling earrings. She is holding a red fabric in her right hand. The background is a blurred outdoor setting with greenery and a building.

  
POONAM  
DESIGNER

Rivaz



THE TREND SETTER