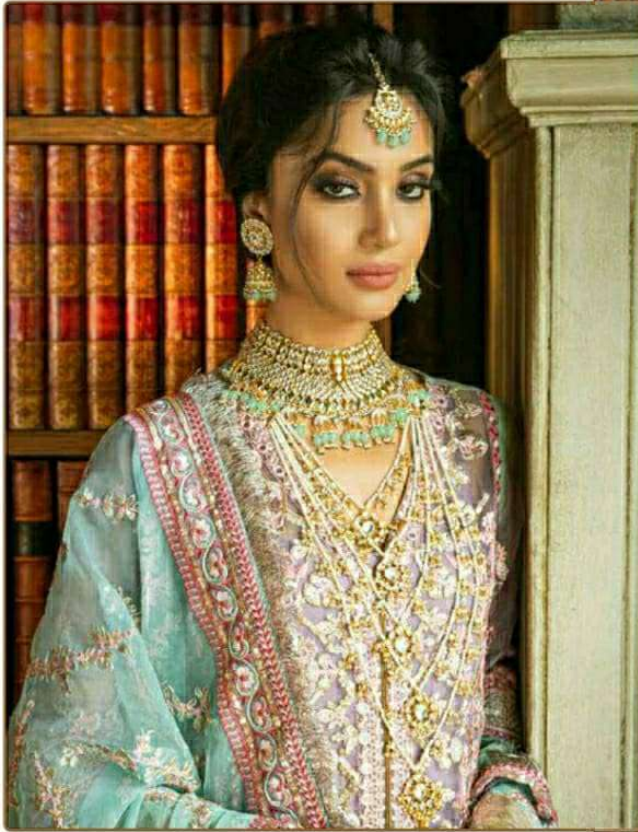




#R-118



TOP- HEAVY ORGANZA EMBROIDERY
BOTTOM- SANTOON WITH PATCH
DUPATTA - HEAVY ORGANZA EMBROIDERY

- Ⓟ DRY CLEAN ONLY.
- ✖ DO NOT USE ANY BLEACH OR STAIN REMOVING CHEMICAL.
- ☎ IRON THE FABRIC AT MODERATE TEMPERATURE.



Sleeves

Ramsha

EMB FRONT

ORGANZA EMB DUPATTA

PATCH

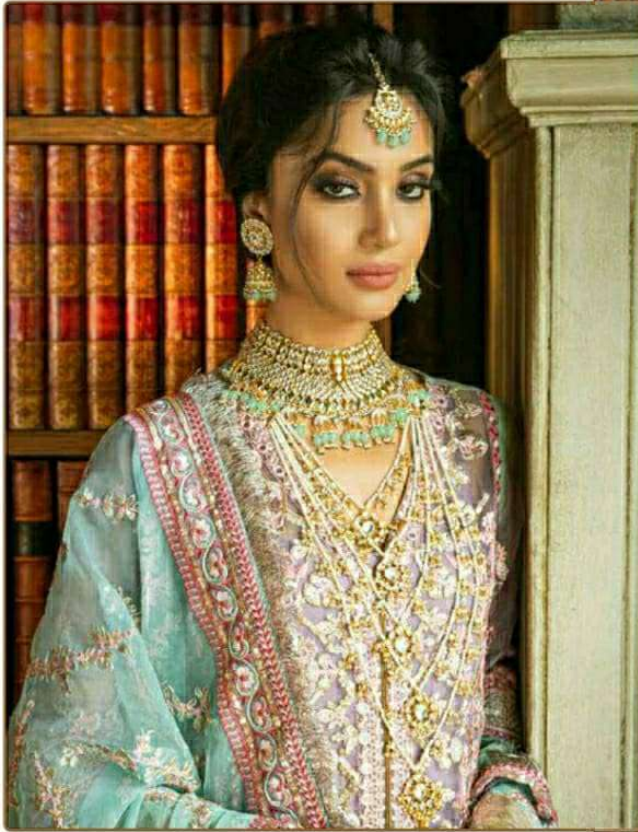
Ramsha

PR-118

TOP- HEAVY ORGANZA EMBROIDER
BOTTOM- SANTOON WITH PATCH
DUPATTA - HEAVY ORGANZA EMBRO



#R-118



TOP- HEAVY ORGANZA EMBROIDERY
BOTTOM- SANTOON WITH PATCH
DUPATTA - HEAVY ORGANZA EMBROIDERY

- Ⓟ DRY CLEAN ONLY.
- ✖ DO NOT USE ANY BLEACH OR STAIN REMOVING CHEMICAL.
- ☎ IRON THE FABRIC AT MODERATE TEMPERATURE.