



SF

SF-130



**WASHING INSTRUCTIONS**

DO NOT USE ANY TYPE OF BLEACH OR STAIN REMOVING CHEMICALS  
BEFORE CUTTING / STITCHING. FABRIC SHOULD BE SOAKED IN WATER  
[ALL COMPONENTS SEPARATELY ] FOR 15 MINUTES  
DO NOT KEEP WET FABRIC IN TWISTED FORM IN ORDER TO AVOID COPY MARKS !  
WASH COLOURED AND WHITE FABRICS SEPARATELY  
IRON CLOTHES AT MODERATE TEMPERATURE ! DO NOT DRY FABRIC IN DIRECT SUNLIGHT  
( EXTRA LACES , HANGING AND ACCESSORIES ARE NOT INLUDED)

TOP - FOX GEORGETTE  
BOTTOM INNER - HEAVY SHANTUN  
DUPATTA - NAZNEEN





TOP - FOX GEORGETTE  
BOTTOM INNER - JAY SHANTON  
DUPATEA - NA - ESH





SF

SF-130



**WASHING INSTRUCTIONS**

DO NOT USE ANY TYPE OF BLEACH OR STAIN REMOVING CHEMICALS  
BEFORE CUTTING / STITCHING. FABRIC SHOULD BE SOAKED IN WATER  
(ALL COMPONENTS SEPARATELY ) FOR 15 MINUTES  
DO NOT KEEP WET FABRIC IN TWISTED FORM IN ORDER TO AVOID COPY MARKS !  
WASH COLOURED AND WHITE FABRICS SEPARATELY  
IRON CLOTHES AT MODERATE TEMPERATURE ! DO NOT DRY FABRIC IN DIRECT SUNLIGHT  
( EXTRA LACES , HANGING AND ACCESSORIES ARE NOT INLUDED)

TOP - FOX GEORGETTE  
BOTTOM INNER - HEAVY SHANTUN  
DUPATTA - NAZNEEN









**SF**

**SF-130 A**

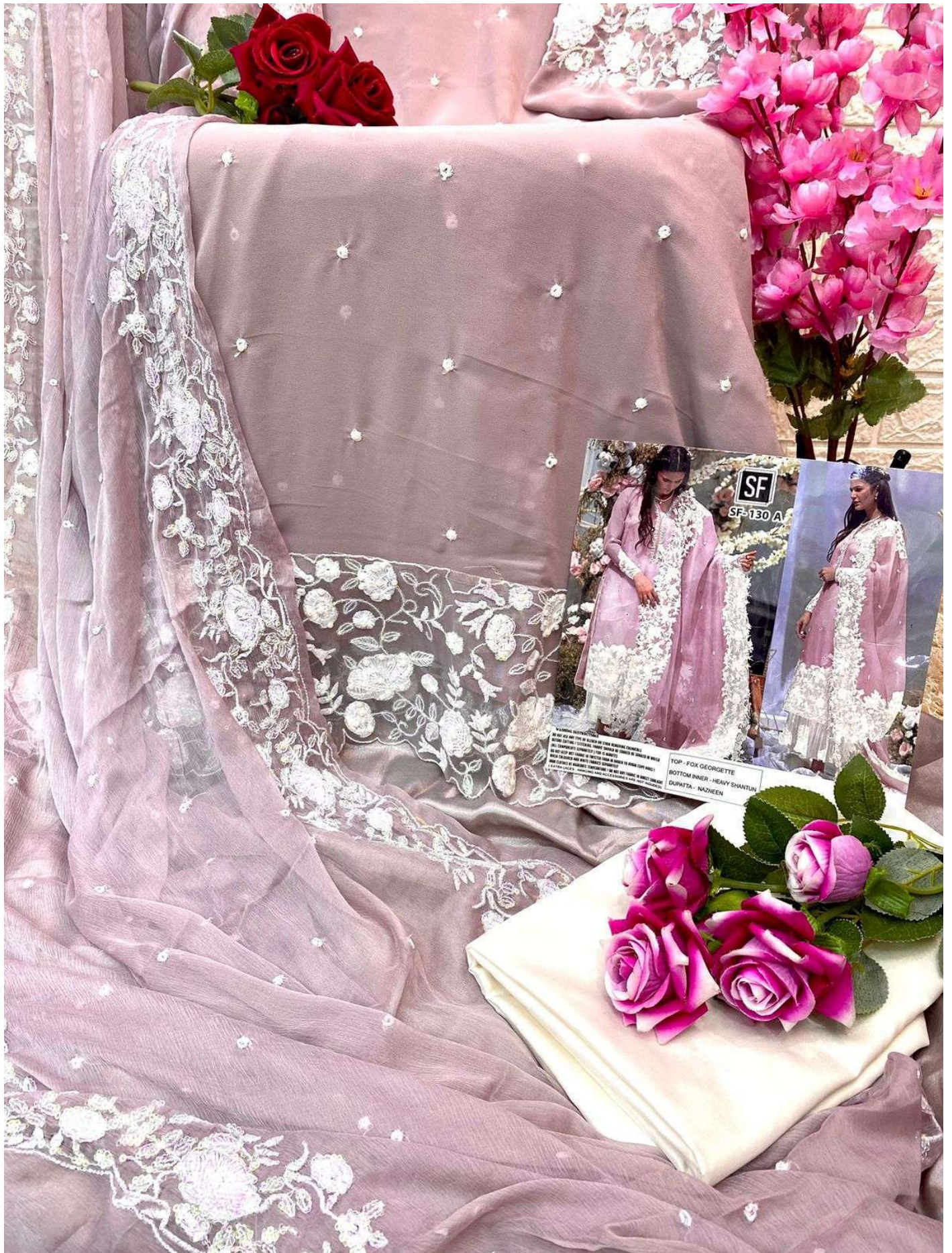


**WASHING INSTRUCTIONS**

DO NOT USE ANY TYPE OF BLEACH OR STAIN REMOVING CHEMICALS  
BEFORE CUTTING / STITCHING. FABRIC SHOULD BE SOAKED IN WATER  
(ALL COMPONENTS SEPARATELY ) FOR 15 MINUTES  
DO NOT KEEP WET FABRIC IN TWISTED FORM IN ORDER TO AVOID COPY MARKS !  
WASH COLOURED AND WHITE FABRICS SEPARATELY  
IRON CLOTHES AT MODERATE TEMPERATURE ! DO NOT DRY FABRIC IN DIRECT SUNLIGHT  
( EXTRA LACES , HANGING AND ACCESSORIES ARE NOT INLUDED)

TOP - FOX GEORGETTE  
BOTTOM INNER - HEAVY SHANTUN  
DUPATTA - NAZNEEN





**SF**  
SF-130 A

**WARNING INSTRUCTIONS:**  
DO NOT USE ANY TYPE OF BLEACH OR OTHER CHEMICALS.  
DO NOT WASH IN HOT WATER OR DRYER.  
DO NOT IRON OR STEAM.  
DO NOT TIE OR HANG BY THE STRAPS OR BELT.  
DO NOT WASH IN HOT WATER OR DRYER.  
DO NOT IRON OR STEAM.

TOP - FOX GEORGETTE  
BOTTOM INNER - HEAVY SHANTUN  
DUPATTA - NAZNEEN



