



DS-178-D

**Top- ORGANZA EMBROIDERY WITH
APLIQUE & PEARL WORK**

Bottom/Iner- SANTOON

Dupatta- ORGANZA EMBROIDERY

WASHING INSTRUCTIONS
DO NOT USE ANY TYPE OF BLEACH OR FORMALIN OR DYEING CHEMICALS
BEFORE CUTTING THE FABRIC SHOULD BE SOAKED IN WATER
ALL COMPONENTS WASH FOR 15 MINUTES
DO NOT USE HOT IRON OR THUSTED IRON PRESS TO AVOID OF MARKS
WASH COLOURED AND WHITE FABRICS SEPARATELY
IRON COLOURED FABRICS SHOULD BE IRONED FROM THE REVERSE SIDE
BEFORE WASHING AND ACCESSORIES ARE NOT ALLOWED





**Top- ORGANZA EMBROIDERY WITH
APLIQUE & PEARL WORK**

Bottom/Iner- SANTOON

Dupatta- ORGANZA EMBROIDERY



DS-178-A



DS-178-B



DS-178-C



DS-178-D





DS-178-D

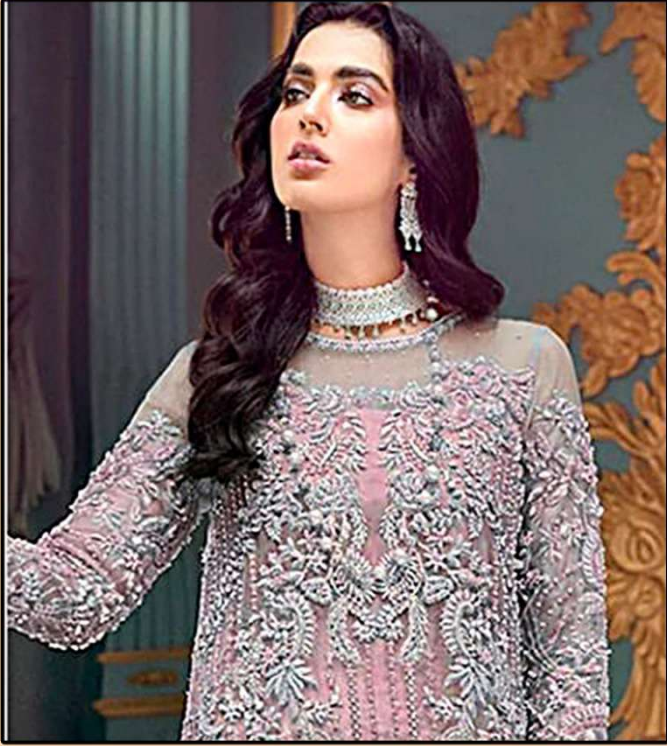
**Top- ORGANZA EMBROIDERY WITH
APLIQUE & PEARL WORK**

Bottom/Iner- SANTOON

Dupatta- ORGANZA EMBROIDERY

WASHING INSTRUCTIONS
DO NOT USE ANY TYPE OF BLEACH OR FORMALDEHYDE CHEMICALS
BEFORE CUTTING THE FABRIC SHOULD BE SOAKED IN WATER
ALL COMPONENTS WASH FOR 15 MINUTES
DO NOT USE HOT IRON OR THUSTED IRON PRESS TO AVOID OF MARKS
WASH COLOURED AND WHITE FABRICS SEPARATELY
IRON COLOURED FABRICS SHOULD BE IRONED FROM INSIDE TO OUT
DRESSING ROOMS AND ACCESSORIES ARE NOT INCLUDED





DS-178-C

**Top- ORGANZA EMBROIDERY WITH
APLIQUE & PEARL WORK**

Bottom/Iner- SANTOON

Dupatta- ORGANZA EMBROIDERY

WASHING INSTRUCTIONS
DO NOT USE ANY TYPE OF BLEACH OR FORMALDEHYDE CHEMICALS
BEFORE DYEING OR STAINING. SHOULD BE WASHED IN COLD WATER
ALL COMPONENTS WASHED FOR 15 MINUTES
DO NOT USE HOT IRON OR PRESSURE DRYER TO AVOID DAMAGING
WASH COLOURED AND WHITE FABRICS SEPARATELY
IRON CLOTHES AT MODERATE TEMPERATURE TO AVOID DAMAGE TO FABRIC
DRESSING ACCESSORIES SHOULD BE WASHED SEPARATELY





DS-178-A

**Top- ORGANZA EMBROIDERY WITH
APLIQUE & PEARL WORK**

Bottom/Iner- SANTOON

Dupatta- ORGANZA EMBROIDERY

WASHING INSTRUCTIONS
DO NOT USE ANY TYPE OF BLEACH OR FORMALDEHYDE CHEMICALS
BEFORE CUTTING THE FABRIC SHOULD BE SOAKED IN WATER
ALL COMPONENTS WASHED FOR 15 MINUTES
DO NOT USE HOT IRON OR PRESSURE FROM IRON TO AVOID DAMAGE
WASH COLOURED AND WHITE FABRICS SEPARATELY
IRON COLOURED FABRICS SHOULD BE IRONED FROM THE REVERSE SIDE
BEFORE WASHING AND PRESSING ARE NOT ALLOWED





DS-178-B

**Top- ORGANZA EMBROIDERY WITH
APLIQUE & PEARL WORK**

Bottom/Iner- SANTOON

Dupatta- ORGANZA EMBROIDERY

WASHING INSTRUCTIONS
DO NOT USE ANY TYPE OF BLEACH OR FORMALIN OR DYEING CHEMICALS
BEFORE CUTTING THE FABRIC SHOULD BE SOAKED IN WATER
ALL COMPONENTS WASHED FOR 15 MINUTES
DO NOT USE HOT IRON OR PRESSURE FROM IRON TO AVOID OF MARKS
WASH COLOURED AND WHITE FABRICS SEPARATELY
IRON COLOURED FABRICS SHOULD BE IRONED FROM THE REVERSE SIDE
BEFORE WASHING AND ACCESSORIES ARE NOT WASHED

