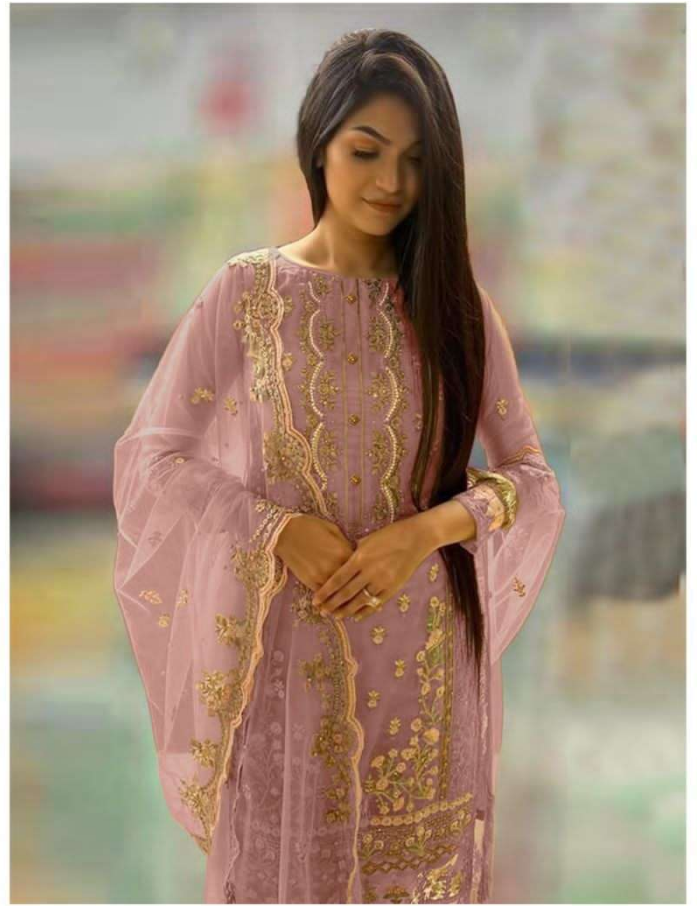


P - 10003-A





 **P - 10003-C**

**TOP - ORGENZA WITH EMBROIDERY WITH
Khatli work**

BOTTOM / INNER - SANTOON

DUPATTA - ORGENZA WITH EMBROIDERY




Saniya
TRENDZ

DRY CLEAN ONLY. 
DO NOT USE ANY BLEACH OR STAIN REMOVING CHEMICAL. 
IRON THE FABRIC AT MODERATE TEMPERATURE. 



 **P - 10003-A**

**TOP - ORGENZA WITH EMBROIDERY WITH
KHATLI WORK**

BOTTOM / INNER - SANTOON

DUPATTA - ORGENZA WITH EMBROIDERY




Saniya
TRENDZ

DRY CLEAN ONLY. 
DO NOT USE ANY BLEACH OR STAIN REMOVING CHEMICAL. 
IRON THE FABRIC AT MODERATE TEMPERATURE. 



 **P - 10003-B**

**TOP - ORGENZA WITH EMBROIDERY WITH
Khatli Work**

BOTTOM / INNER - SANTOON

DUPATTA - ORGENZA WITH EMBROIDERY




Saniya
TRENDZ

DRY CLEAN ONLY. 
DO NOT USE ANY BLEACH OR STAIN REMOVING CHEMICAL. 
IRON THE FABRIC AT MODERATE TEMPERATURE. 



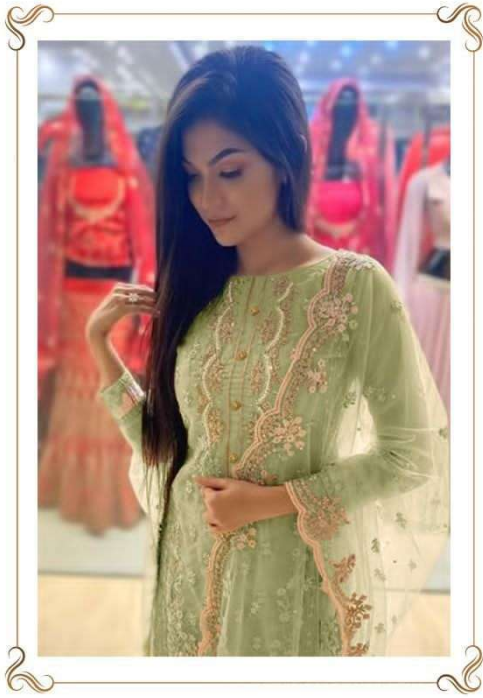
🔦 P - 10003-A



🔦 P - 10003-B



🔦 P - 10003-C



P - 10003-C

