

anaara®



AA 117-A

www.anaaraethnic.com

*SECOND DUPATTA IS OPTIONAL & CHARGEABLE

anaara



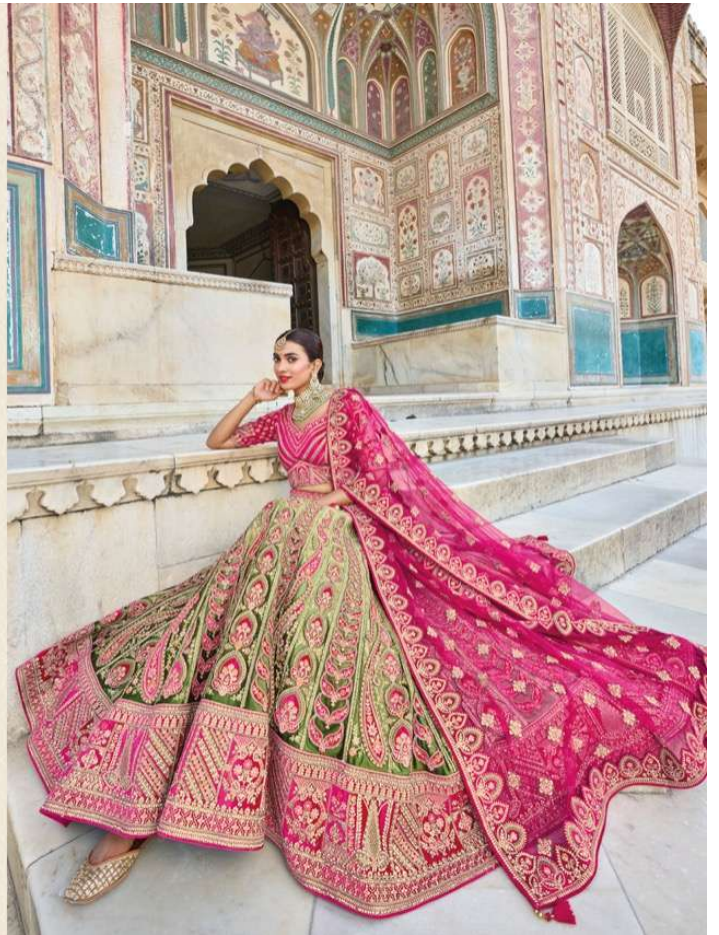
WEAR A LEHENGA AND MAKE EVERY MOMENT SPECIAL

anaara



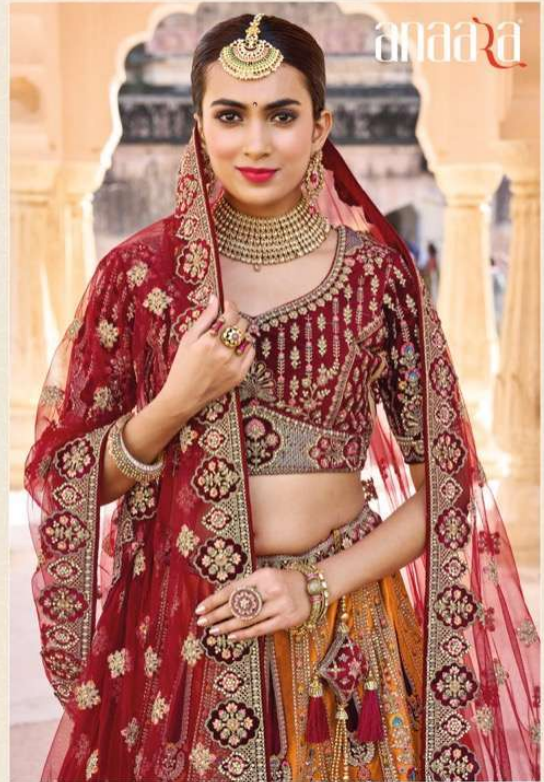
AA122

KEEP YOUR DOCTOR ASIDE. MY LEHENGA CAN TWIRL YOUR BLOOD CIRCULATION





AA125



anara

RED LEHENGA IS ONE OF MY FAVORITE DRESSES THAT HAS ENOUGH TO TWIRL MY BLOOD CIRCULATION



AA110

anaara



SPINNING LIKE A GIRL IS A BRAND-NEW LEHENGA

anaara



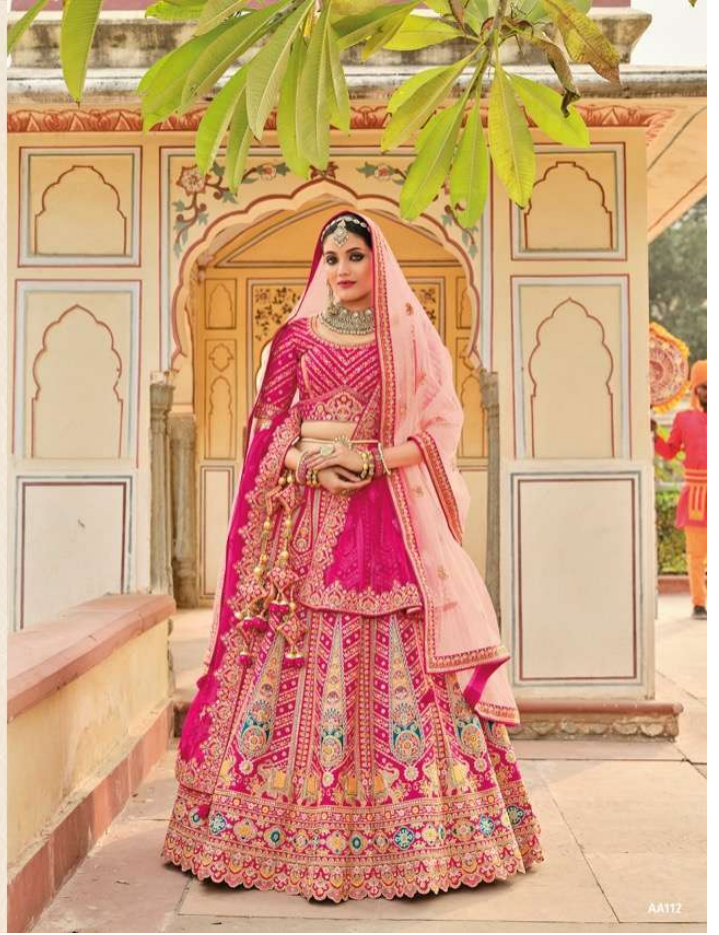
AA126



SPINNING LIKE A GIRL IS A BRAND-NEW LEHENGA



anaara



AA172

anaara



ONE MUST BE IN TUNE WITH THE TIMES TO APPRECIATE TRADITIONS



anaara



anaara

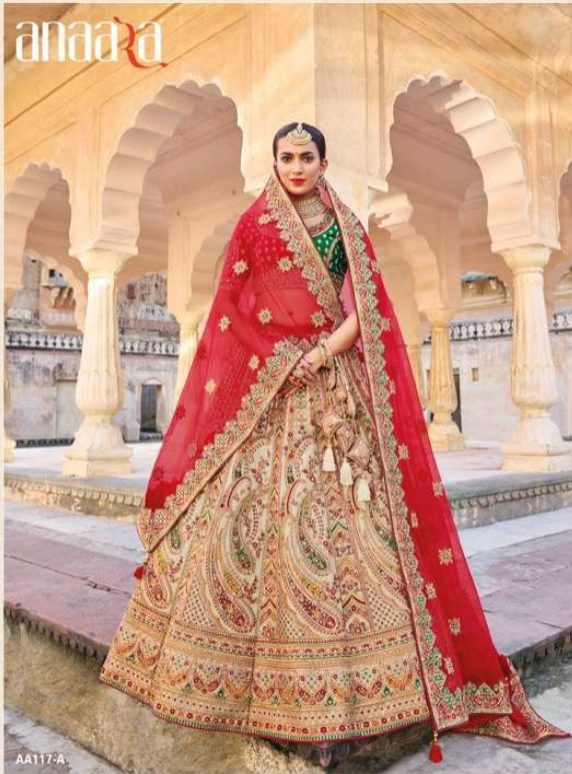


AA117

THIS LEHenga TWIRLS ME IN FRONT OF THE MIRROR, WAKING MY CONFIDENCE



anaara



AA117-A

THIS LEHenga TWIRLS ME IN FRONT OF THE MIRROR, WAKING MY CONFIDENCE



anaara®



AA 117-A

www.anaaraethnic.com

*SECOND DUPATTA IS OPTIONAL & CHARGEABLE





AA119

anaara

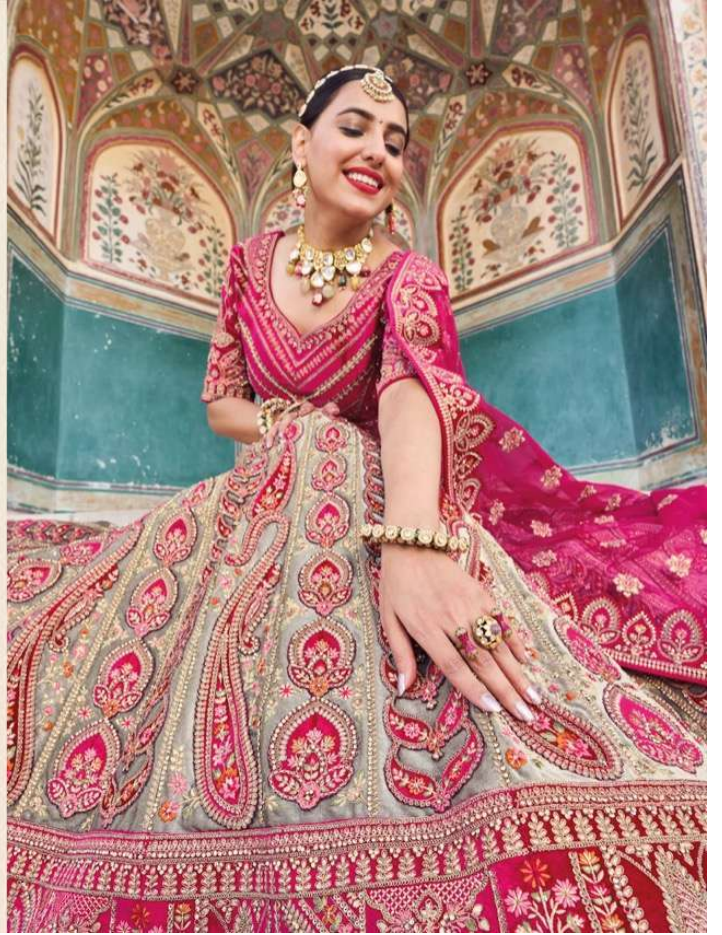


MY NEW DRESS CODE IS HERE. I CALL IT 'LEHENGA'

anaara



AA120



|| Tathastu™ ||

DESIGN NO	DESCRIPTION	PRICE
AA-103	CHANYA CHOLI	10500/-
AA-109	CHANYA CHOLI	14995/-
AA-110	CHANYA CHOLI	12995/-
AA-111	CHANYA CHOLI	9995/-
AA-112	CHANYA CHOLI	11025/-
AA-113	CHANYA CHOLI	12055/-
AA-114	CHANYA CHOLI	12845/-
AA-115	CHANYA CHOLI	11955/-
AA-116	CHANYA CHOLI	14665/-
AA-117	CHANYA CHOLI	13865/-
AA-118	CHANYA CHOLI	11955/-
AA-119	CHANYA CHOLI	13195/-
AA-120	CHANYA CHOLI	14355/-
AA-121	CHANYA CHOLI	14325/-
AA-122	CHANYA CHOLI	14955/-
AA-123	CHANYA CHOLI	13185/-
AA-124	CHANYA CHOLI	13985/-
AA-125	CHANYA CHOLI	13185/-
AA-126	CHANYA CHOLI	14255/-
	TOTAL	/-
	12% GST EXTRA ON ABOVE RATE	
1.)Second Dupatta is optional & chargeable		



AA - 109

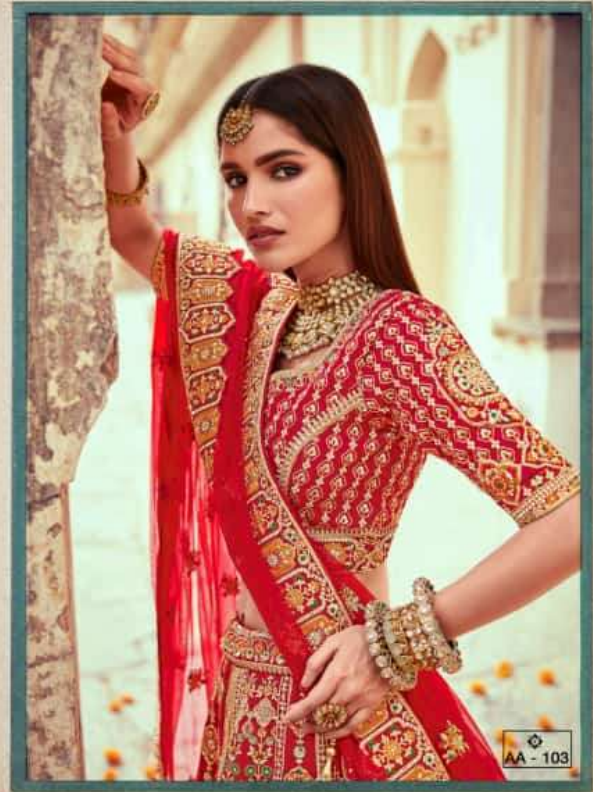


anaara

NOW IS THE TIME TO BE A LITTLE MORE ADVENTUROUS IN PRINTS AND COLOURS OF YOUR DRESS. EXPERIENCE THE EXOTIC FLORAL BLISS IN SOFT AND EMBROIDERED WHICH GIVES YOU A FEMININE TOUCH TO YOUR PERSONALITY



anaara



AA - 103

EVERY CREATION WAS CLASSIC YET VERSATILE WITH A MODERN TOUCH
GIVEN EVEN THE MOST TRADITIONAL GARMENT WHILE
RETAINING ITS RICHNESS OF EMBROIDERY, DETAILING & TEXTURES

