

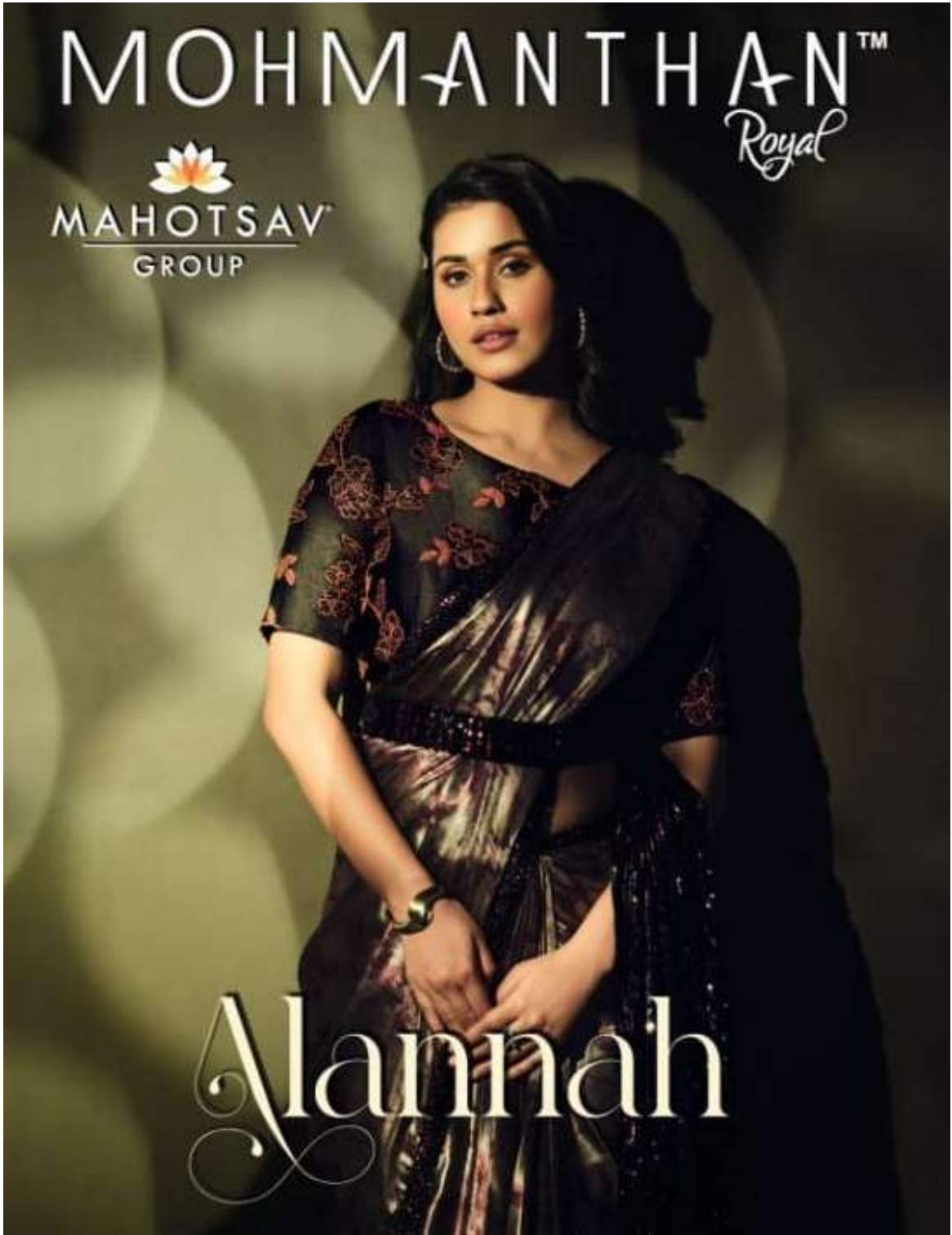
MOHMANTHAN™

Royal



MAHOTSAV  
GROUP

Alannah



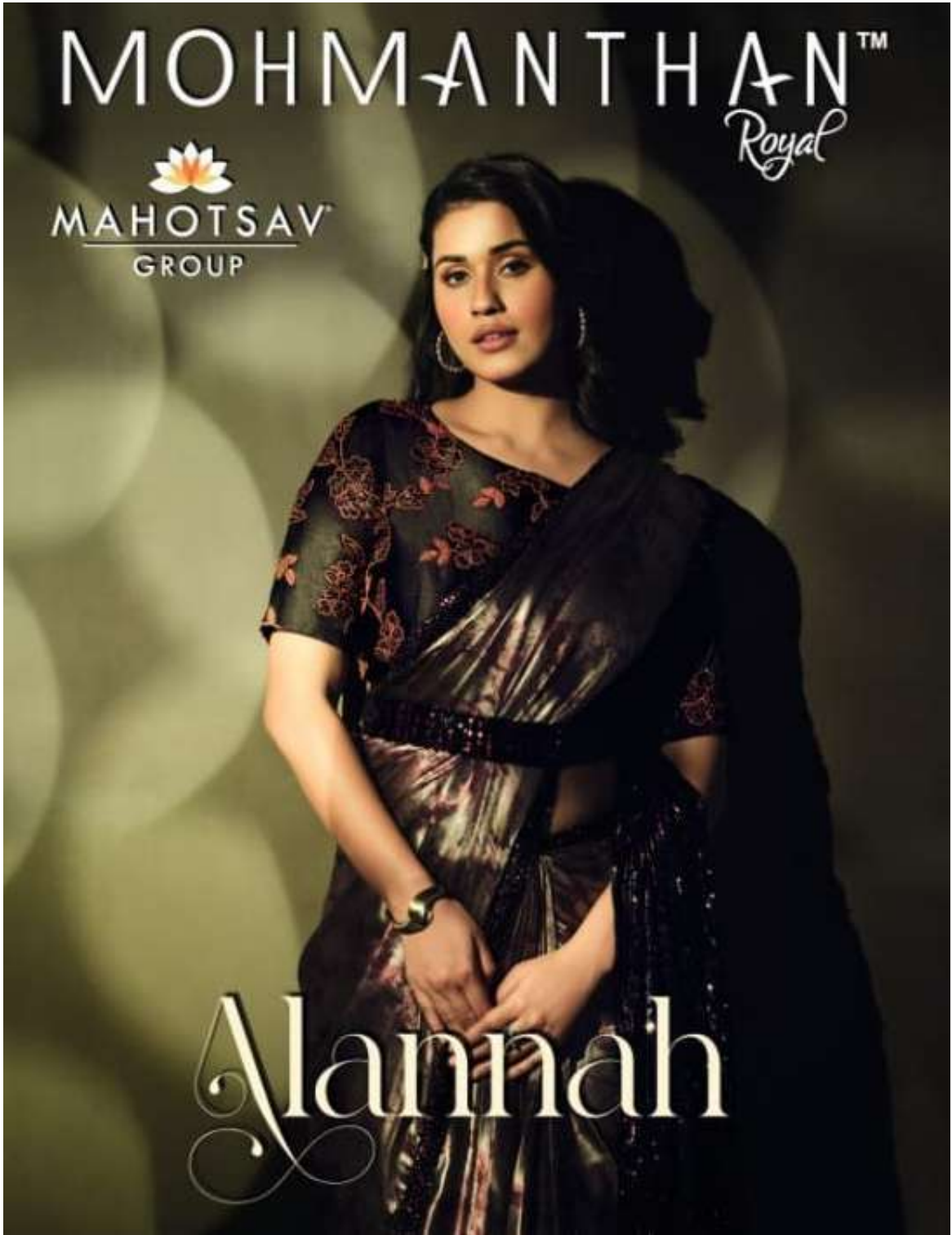
MOHMANTHAN™

Royal



MAHOTSAV  
GROUP

Alannah



The color of  
**FEMINITY**

A feminine and delicate onion pink saree with delicate and meticulous silver embroidery and applique details.





The love of **STYLE**

A stylish and beautiful emerald green saree with Applique Hand work, floral embroidery and shimmering sequined pallu.



**22608**

Fabric : Crystal Lycra



The art of **Fashion**

A pretty peach pre-draped saree with cut work, hand embroidered adornment and a scalloped belt for added appeal.



The Queen of  
**ROMANCE**

A very glamorous hot red saree with sequins embroidery and all over corpus design applique work





The magic of  
**SHIMMER**

A soft green Saree with minute leaf embroidered border and a designer sequined abstract embroidered blouse with handwork details.



**22610**  
Fabric : Soft Net

DESIGN NO	SAREE FABRIC	BLOUSE FABRIC	Saree WORK	Blouse Work	CUSTZ (SEMISTITCH UN-STITCH)	BLOUSE LENGTH
22608	Crystal Lycra	Raw Silk	Solid Saree with Sequence Work in Border and Pallu, Flower Embroidered Lace with Tassels Work	Heavy Embroidered	Stitched Blouse	up to 38 Inch with margin of 42 inch
22609	Crepe Satin Silk	Raw Silk	Solid Saree with Floral Embroidered Lace and Tassels Work	Heavy Embroidered	Stitched Blouse	up to 38 Inch with margin of 42 inch
22610	Soft Net	Raw Silk, net	Solid Saree with Sequence Work in Border, Floral Embroidered Lace with Tassels Work	Sequence abstract Embroidered Work	Stitched Blouse	up to 38 Inch with margin of 42 inch
22611	Crepe Georgette	raw Silk	Floral Cord Embroidered Border with Tassels Work	Heavy Embroidered	Stitched Blouse	up to 38 Inch with margin of 42 inch
22612	Digital Printed Satin Georgette	Raw Silk	Digital Floral Printed, Black Sequined Pallu with Tassels Work	Heavy Embroidered	Stitched Blouse	up to 38 Inch with margin of 42 inch
22613	Crepe Georgette	Raw Silk	Floral Embroidered with Sequined Flare Pallu and Border	Heavy Embroidered	Stitched Blouse	up to 38 Inch with margin of 42 inch
22614	Crepe Silk	Raw Silk	Solid Saree with Floral Embroidered Lace and Tassels Work	Floral Embroidered	Stitched Blouse	up to 38 Inch with margin of 42 inch
22615	Crepe Lycra	Raw Silk	Sequins Embroidery, Floral applique Work	Heavy Embroidered	Stitched Blouse	up to 38 Inch with margin of 42 inch
22616	Crepe Lycra	Raw Silk	Sequins Embroidery, Floral applique Work	Heavy Embroidered	Stitched Blouse	up to 38 Inch with margin of 42 inch
22617	Satin Silk Crepe	Raw Silk	Silver Embroidery and applique Work	Heavy Embroidered	Stitched Blouse	up to 38 Inch with margin of 42 inch
22618	Crepe Lycra	Sequins	Mirror Embroidery with Sequins Work, Floral applique Work and Tassels Work	Heavy Embroidered	Stitched Blouse	up to 38 Inch with margin of 42 inch
22619	Chiffon Lycra	Raw Silk	Sequined Embellishment	Heavy Embroidered	Stitched Blouse	up to 38 Inch with margin of 42 inch



**MAHOTSAV GROUP PRESENTS**  
**MOHMANTHAN-Royal**  
**"Alannah"**

<b>DESIGN NO.</b>	<b>DESCRIPTION</b>	<b>PRICE</b>
22608	DESIGNER SAREE	3255
22609	DESIGNER SAREE	3465
22610	DESIGNER SAREE	3465
22611	DESIGNER SAREE	2865
22612	DESIGNER SAREE	4095
22613	DESIGNER SAREE	3495
22614	DESIGNER SAREE	3155
22615	DESIGNER SAREE	3135
22616	DESIGNER SAREE	3275
22617	DESIGNER SAREE	3675
22618	DESIGNER SAREE	3465
22619	DESIGNER SAREE	2715
22620	DESIGNER SAREE	2685
<b>NOTE : GST@5% WILL BE CHARGED ON THE ABOVE PRICES.</b>		



MOHMAN THAN™

Presenting

high  
style Collection

# Alannah

Our highly acclaimed collection of ONE MINUTE SAREES, under our brand MOHMAN THAN

A tasteful collection of designer ready-to-wear sarees brimming with many elements that make the modern Indian woman. Designs that are meant for women who is contemporary chic and at the very same time connected to her roots for women who are glamorous and elegant, cultured and spirited.



COLORS



WHEN TO WEAR ?

COCKTAIL PARTIES, SANGEET NIGHTS, WEDDINGS

FABRIC

Lyora, Silk Crepe, Silk Georgette, Net.

HOW TO WEAR ?

Pair the sarees with your favourite fashion accessories, sleek hairdo and your natural posse for a diva-esque appeal.



The art of **Fashion**



**22609**  
Fabric : Crepe Satin Silk



The power of **SIMPLICITY**

A quintessential summery aqua blue saree with multi colored sequins floral embroidered designer appeal.



22616  
Fabric : Crepe Lycra

The shade of  
**MYSTERY**

A digital floral printed metallic saree made stretch with black sequined pallu and designer embroidered details.



22612

Fabric : Digital Sparkle Print

# The Queen of ROMANCE

A very glamorous hot red saree with sequins embroidery and 3D red carpet style floral applique work.



22615  
Fabric : Crepe Lycra

The beauty of **MODERNITY**

Exude royalty in this royal blue saree with unique fabric ornamentation of applique work and sequins.







The print of  
**DREAM**

Delicate print in soft shades of aqua and double sequined embellishment.



22619

Fabric : Shimmer Chiffon Lycra



**22617**  
Fabric : Suede Crepe Silk



The PRINT  
of DREAMS

Delicate print in soft shades of aqua and double sequined embellishment.



The color of  
**FEMINITY**

A feminine and delicate onion pink saree with delicate and meticulous silver embroidery and applique details.



**22617**

Fabric : Satin Silk Crepe



The charm of  
**BLACK**

An ever so glamorous black cocktail saree adorned with mirror embroidery and subtle floral applique work.

**22618**  
Fabric : Crepe Lycra



The Secret of  
**ELEGANCE**

A pastel peach saree with sequined  
frill pallu style and delicate floral  
embroidered design blouse.

**22615**  
Fabric : Crepe Georgette



The season of  
**GLAMOUR**

A beautiful saree in a trending shade of Viva Magenta, embellished with floral cord embroidered border, shoulder applique and belt.



**22611**  
Fabric : Crepe Georgette



22608

22609

22610



22611

22612

22613



22614

22615

22616

22617



22618

22619

22620

MOHMANTRA™

MAHOTSAV  
GROUP

Alannah