



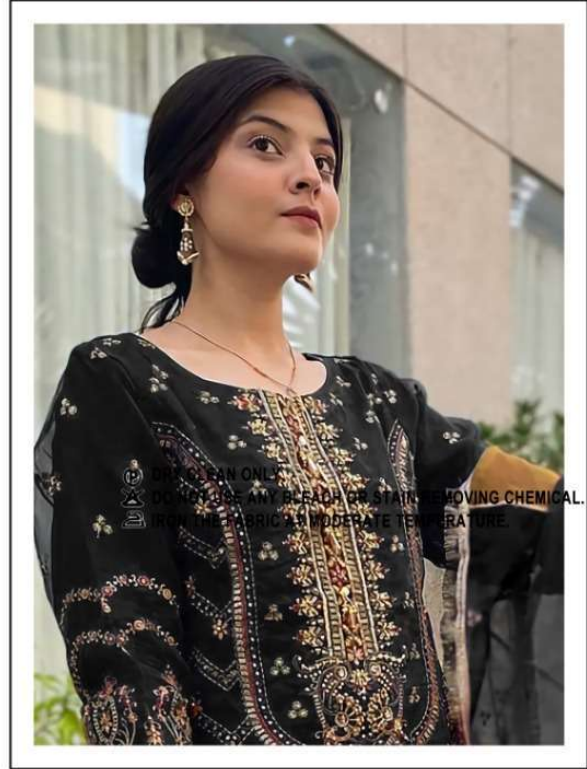
**D.NO.170-C**

**FABRIC DETAILS**

**TOP-** HEAVY DAL ORGANZA WITH EMBROIDERY WORK WITH DIMAND MOTI

**BOTTOM/INNER-** SANTOON WITH WORK

**DUPATTA/NET-** HEAVY DAL ORGANZA WITH EMBROIDERY WORK WITH FANCY LESS



**D.NO.170-A**

**FABRIC DETAILS**

**TOP-** HEAVY DAL ORGANZA WITH EMBROIDERY WORK WITH DIMAND MOTI

**BOTTOM/INNER-** SANTOON WITH WORK

**DUPATTA/NET-** HEAVY DAL ORGANZA WITH EMBROIDERY WORK WITH FANCY LESS



**D.NO.170-C**

**FABRIC DETAILS**

**TOP-** HEAVY DAL ORGANZA WITH EMBROIDERY WORK WITH DIMAND MOTI

**BOTTOM/INNER-** SANTOON WITH WORK

**DUPATTA/NET-** HEAVY DAL ORGANZA WITH EMBROIDERY WORK WITH FANCY LESS



D.NO.170-A



D.NO.170-B



D.NO.170-C



**:TOP:**

HEAVY DAL ORGANZA WITH EMBROIDERY  
WORK WITH DIMAND MOTI.

**:BOTTAMI/INNER:**

SANTOON WITH WORK.

**:DUPATTA/NET:**

HEAVY DAL ORGANZA WITH EMBROIDERY  
WORK WITH FANCY LESS.



**D.NO.170-B**

**FABRIC DETAILS**

- TOP-** HEAVY DAL ORGANZA WITH EMBROIDERY WORK WITH DIMAND MOTI
- BOTTOM/INNER-** SANTOON WITH WORK
- DUPATTA/NET-** HEAVY DAL ORGANZA WITH EMBROIDERY WORK WITH FANCY LESS