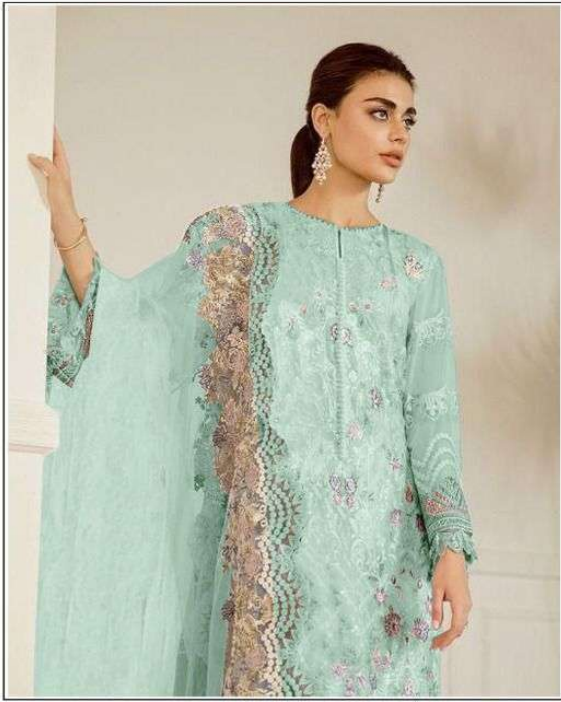


TOP- HEAVY FOX WITH 3mm SEQUENCE
EMBROIDERY WORK
DUPATTA - HEAVY NET WITH EMBROIDERY WORK
BOTTOM/INNER- HEAVY SANTOON

D.No-1631-C

Ⓟ DRY CLEAN ONLY.
✘ DO NOT USE ANY BLEACH OR STAIN REMOVING CHEMICAL.
☐ IRON THE FABRIC AT MODERATE TEMPERATURE.





TOP- HEAVY FOX WITH 3mm SEQUENCE
EMBROIDERY WORK
DUPATTA - HEAVY NET WITH EMBROIDERY WORK
BOTTOM/INNER- HEAVY SANTOON

D.No-1631-C

Ⓟ DRY CLEAN ONLY.
✘ DO NOT USE ANY BLEACH OR STAIN REMOVING CHEMICAL.
☐ IRON THE FABRIC AT MODERATE TEMPERATURE.



Z
ZIANA[®]

TOP

DUPTTA

SLEEVE

BOTTOM

Z
ZIANA
FEEL THE DIFFERENCE

Z
ZIANA
FEEL THE DIFFERENCE





TOP- HEAVY FOX WITH 3mm SEQUENCE
EMBROIDERY WORK
DUPATTA - HEAVY NET WITH EMBROIDERY WORK
BOTTOM/INNER- HEAVY SANTOON

D.No-1631-B

Ⓟ DRY CLEAN ONLY.
✘ DO NOT USE ANY BLEACH OR STAIN REMOVING CHEMICAL.
☐ IRON THE FABRIC AT MODERATE TEMPERATURE.



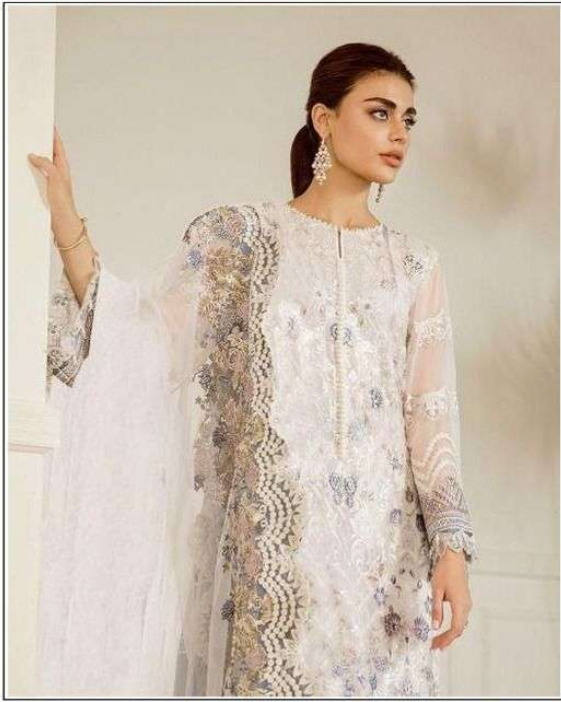


TOP- HEAVY FOX WITH 3mm SEQUENCE
EMBROIDERY WORK
DUPATTA - HEAVY NET WITH EMBROIDERY WORK
BOTTOM/INNER- HEAVY SANTOON

D.No-1631-D

Ⓟ DRY CLEAN ONLY.
✘ DO NOT USE ANY BLEACH OR STAIN REMOVING CHEMICAL.
☐ IRON THE FABRIC AT MODERATE TEMPERATURE.





TOP- HEAVY FOX WITH 3mm SEQUENCE
EMBROIDERY WORK
DUPATTA - HEAVY NET WITH EMBROIDERY WORK
BOTTOM/INNER- HEAVY SANTOON

D.No-1631-A

Ⓟ DRY CLEAN ONLY.
✘ DO NOT USE ANY BLEACH OR STAIN REMOVING CHEMICAL.
☐ IRON THE FABRIC AT MODERATE TEMPERATURE.





D.No-1631-A



D.No-1631-B



D.No-1631-C



D.No-1631-D

Z
ZIANA®

TOP- HEAVY FOX WITH 3mm SEQUENCE
EMBROIDERY WORK
DUPATTA - HEAVY NET WITH EMBROIDERY WORK
BOTTOM/INNER- HEAVY SANTOON

☐ DRY CLEAN ONLY.
✘ DO NOT USE ANY BLEACH OR STAIN REMOVING CHEMICAL.
☐ IRON THE FABRIC AT MODERATE TEMPERATURE.