

RINAZ[®]
FASHION

D.NO.1393 C

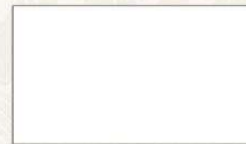


TOP - FOX GEORGETTE WITH EMBROIDERY
DUPTTA - NAZNIN EMBROIDERY FREEL DUPATTA
INNER / BOTTOM - DULL SANTOON



WASHING INSTRUCTIONS

DO NOT USE ANY TYPE OF BLEACH OR STAIN REMOVING CHEMICALS
BEFORE CUTTING / STITCHING. FABRIC SHOULD BE SOAKED IN WATER
(ALL COMPONENTS SEPARATELY) FOR 15 MINUTES
DO NOT KEEP WET FABRIC IN TWISTED FORM IN ORDER TO AVOID COPY MKRS !
WASH COLOURED AND WHITE FABRICS SEPARATELY
IRON CLOTHES AT MODERATE TEMPERATURE ! DO NOT DRY FABRIC IN DIRECT SUNLIGHT
(EXTRA LACES , HANGING AND ACCESSORIES ARE NOT INDUDED)



RINAZ[®]
FASHION

D.NO.1393 C

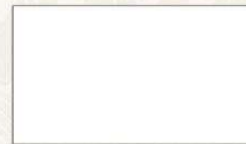


TOP - FOX GEORGETTE WITH EMBROIDERY
DUPTTA - NAZNIN EMBROIDERY FREEL DUPATTA
INNER / BOTTOM - DULL SANTOON



WASHING INSTRUCTIONS

DO NOT USE ANY TYPE OF BLEACH OR STAIN REMOVING CHEMICALS
BEFORE CUTTING / STITCHING. FABRIC SHOULD BE SOAKED IN WATER
(ALL COMPONENTS SEPARATELY) FOR 15 MINUTES
DO NOT KEEP WET FABRIC IN TWISTED FORM IN ORDER TO AVOID COPY MKRS !
WASH COLOURED AND WHITE FABRICS SEPARATELY
IRON CLOTHES AT MODERATE TEMPERATURE ! DO NOT DRY FABRIC IN DIRECT SUNLIGHT
(EXTRA LACES , HANGING AND ACCESSORIES ARE NOT INDUDED)



RINAZ[®]
FASHION

D.NO.1393 A

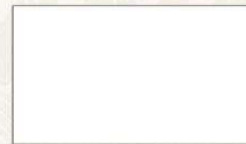


TOP - FOX GEORGETTE WITH EMBROIDERY
DUPTTA - NAZNIN EMBROIDERY FREEL DUPATTA
INNER / BOTTOM - DULL SANTOON



WASHING INSTRUCTIONS

DO NOT USE ANY TYPE OF BLEACH OR STAIN REMOVING CHEMICALS
BEFORE CUTTING / STITCHING. FABRIC SHOULD BE SOAKED IN WATER
(ALL COMPONENTS SEPARATELY) FOR 15 MINUTES
DO NOT KEEP WET FABRIC IN TWISTED FORM IN ORDER TO AVOID COPY MKRS !
WASH COLOURED AND WHITE FABRICS SEPARATELY
IRON CLOTHES AT MODERATE TEMPERATURE ! DO NOT DRY FABRIC IN DIRECT SUNLIGHT
(EXTRA LACES , HANGING AND ACCESSORIES ARE NOT INDUDED)



RINAZ[®]
FASHION

D.NO.1393 D



TOP - FOX GEORGETTE WITH EMBROIDERY
DUPTTA - NAZNIN EMBROIDERY FREEL DUPATTA
INNER / BOTTOM - DULL SANTOON



WASHING INSTRUCTIONS

DO NOT USE ANY TYPE OF BLEACH OR STAIN REMOVING CHEMICALS
BEFORE CUTTING / STITCHING. FABRIC SHOULD BE SOAKED IN WATER
(ALL COMPONENTS SEPARATELY) FOR 15 MINUTES
DO NOT KEEP WET FABRIC IN TWISTED FORM IN ORDER TO AVOID COPY MKRS !
WASH COLOURED AND WHITE FABRICS SEPARATELY
IRON CLOTHES AT MODERATE TEMPERATURE ! DO NOT DRY FABRIC IN DIRECT SUNLIGHT
(EXTRA LACES , HANGING AND ACCESSORIES ARE NOT INDUDED)



RINAZ[®]
FASHION

D.NO.1393 B

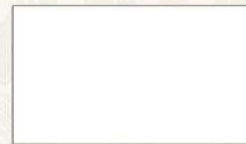


TOP - FOX GEORGETTE WITH EMBROIDERY
DUPTTA - NAZMIN EMBROIDERY FREEL DUPATTA
INNER / BOTTOM - DULL SANTOON



WASHING INSTRUCTIONS

DO NOT USE ANY TYPE OF BLEACH OR STAIN REMOVING CHEMICALS
BEFORE CUTTING / STITCHING. FABRIC SHOULD BE SOAKED IN WATER
(ALL COMPONENTS SEPARATELY) FOR 15 MINUTES
DO NOT KEEP WET FABRIC IN TWISTED FORM IN ORDER TO AVOID COPY MARKS !
WASH COLOURED AND WHITE FABRICS SEPARATELY
IRON CLOTHES AT MODERATE TEMPERATURE ! DO NOT DRY FABRIC IN DIRECT SUNLIGHT
(EXTRA LACES , HANGING AND ACCESSORIES ARE NOT INCLUDED)



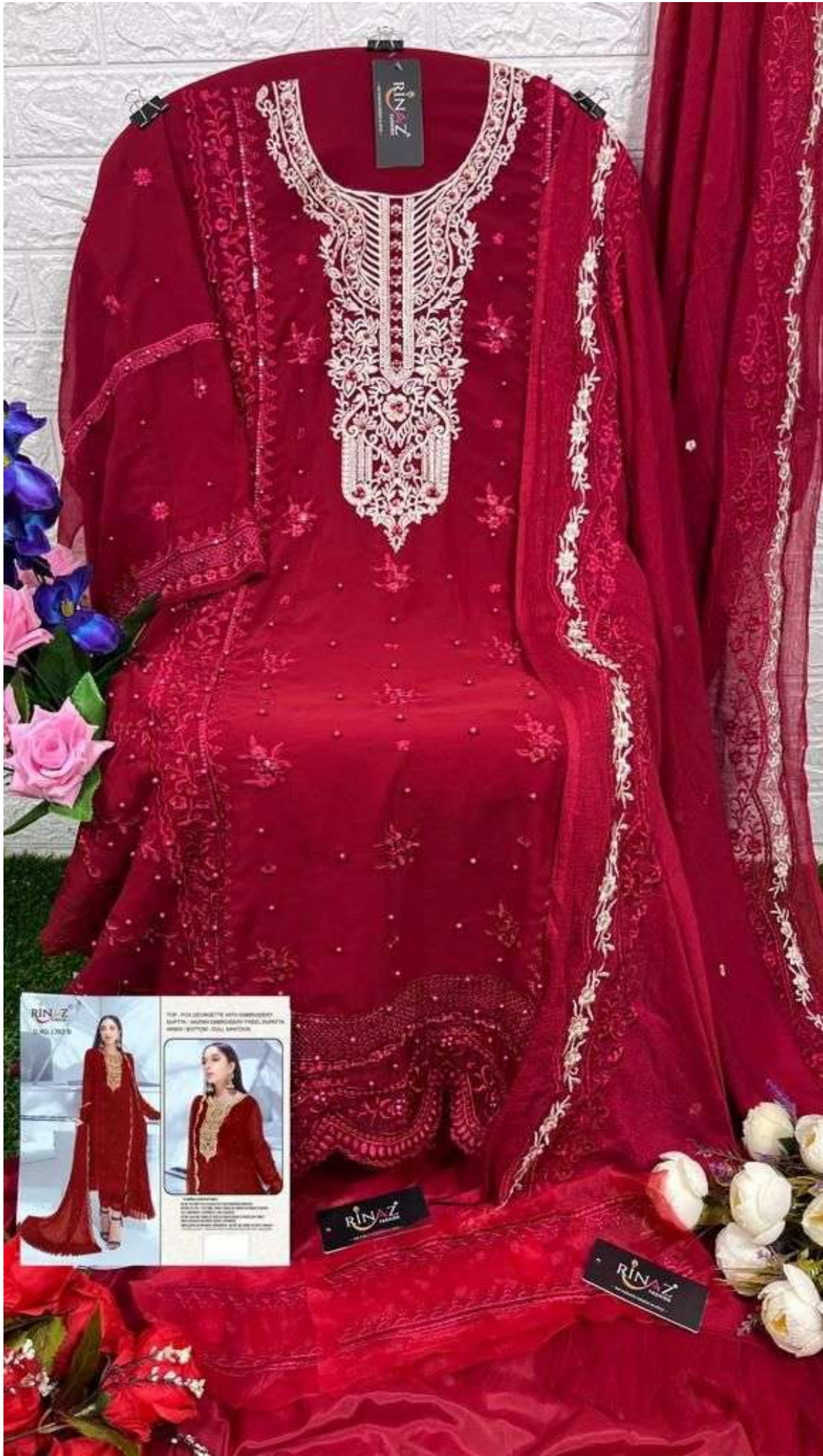


RIN-Z
TOP - FOR PROMIETTE WITH CARRIAGE

TOP - FOR PROMIETTE WITH CARRIAGE
SUIT FOR: WEDDING, PROMIETTE, FORMAL, EVENING
PRICE: 1000000 - 10000000







RINAZ
L 140-150 D 95

THE 2023 COLLECTION WITH EMBROIDERY, SOFT, LUXURY FABRIC, FINE DETAILS, HIGH QUALITY MATERIAL.

100% COTTON
100% POLYESTER
100% SILK
100% WOOL
100% LINEN
100% CASHMERE
100% ALPACA
100% ANGORA
100% MOHAIR
100% TWEED
100% HERRINGBONE
100% CHECK
100% STRIPED
100% PLaid
100% BROU
100% TARTAN
100% CHECKED
100% STRIPED
100% PLaid
100% BROU
100% TARTAN
100% CHECKED

RINAZ

RINAZ



D.NO.1593 A



D.NO.1593 B



D.NO.1593 C



D.NO.1593 D