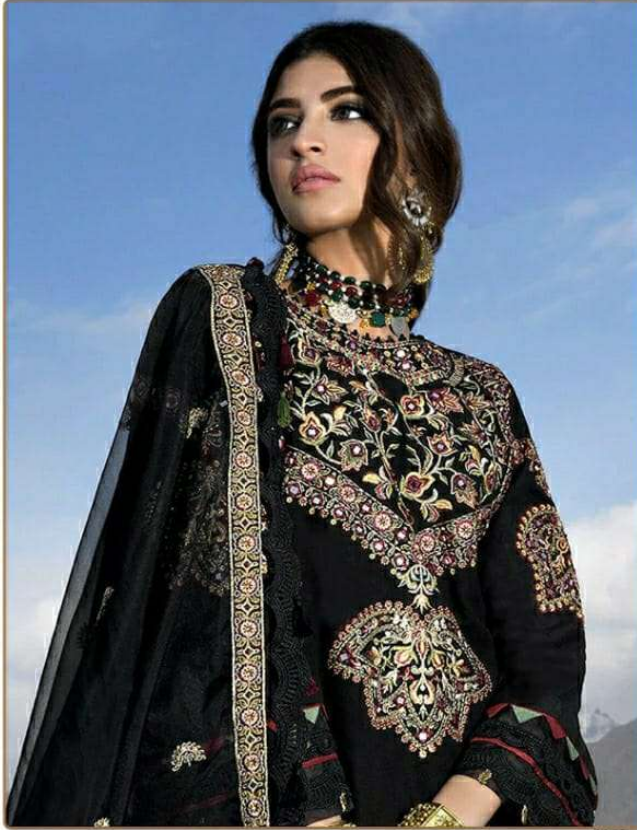


  
Ramsha®

#R-492



TOP- FOX GEORGETTE WITH HEAVY EMBROIDERY  
BOTTOM- DULL SANTOON  
DUPATTA - NET EMBROIDERY WITH FRILL

Ⓟ DRY CLEAN ONLY.  
ⓧ DO NOT USE ANY BLEACH OR STAIN REMOVING CHEMICAL.  
☎ IRON THE FABRIC AT MODERATE TEMPERATURE.





Emb Net Dupatta

Emb Front

Emb Sleeves



TOP: 100% COUNTESS WITH SILK & SATIN  
SHIRT: 100% COUNTESS  
DUPATTA: NET WITH EMBROIDERY

100% COUNTESS  
SHIRT AND TOP: 100% COUNTESS  
DUPATTA: NET WITH EMBROIDERY

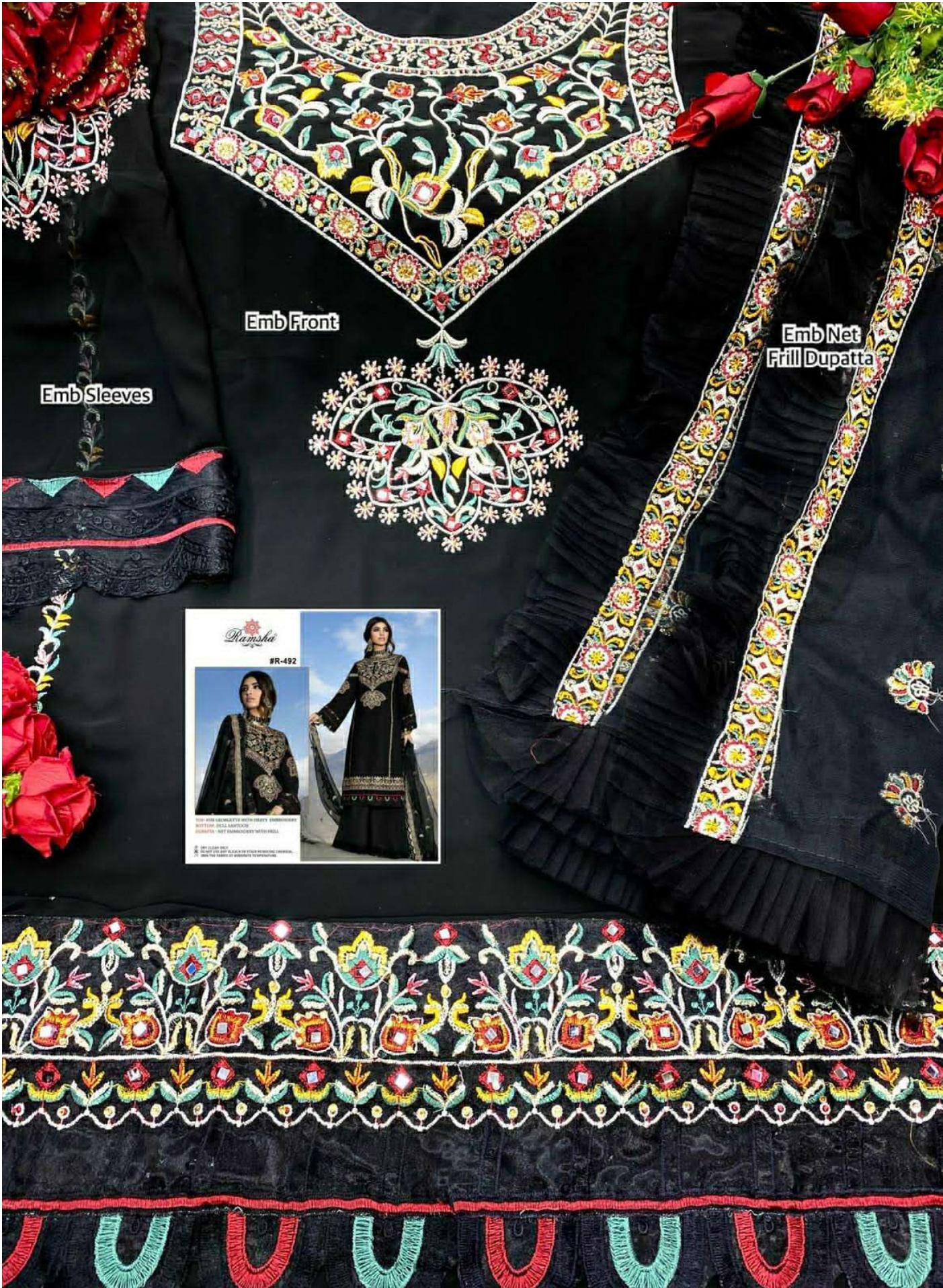


#R-493



**TOP- FOX GEORGETTE WITH HEAVY EMBROIDERY**  
**BOTTOM- SANTOON**  
**DUPATTA - NET WITH EMBROIDERY**

Ⓟ DRY CLEAN ONLY.  
✘ DO NOT USE ANY BLEACH OR STAIN REMOVING CHEMICAL.  
☎ IRON THE FABRIC AT MODERATE TEMPERATURE.



Emb Front

Emb Net Frill Dupatta

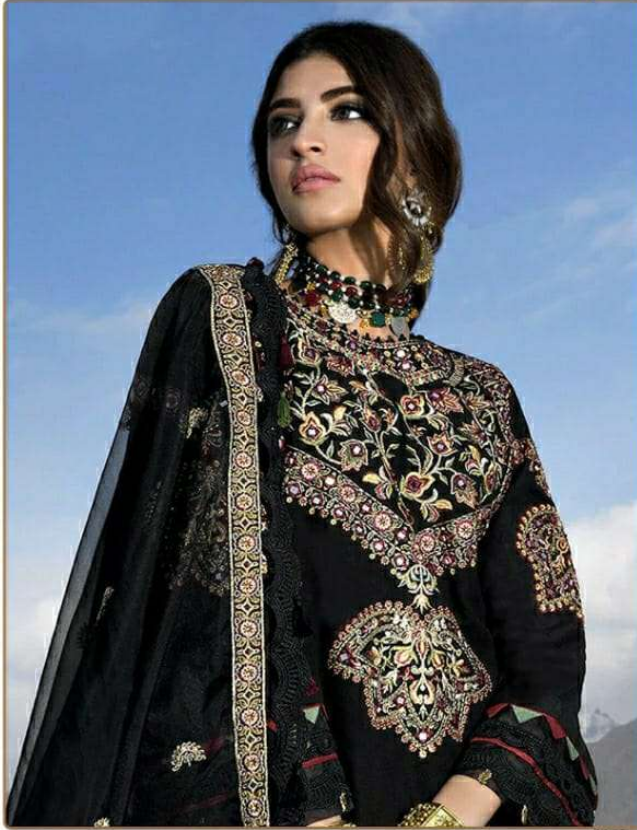
Emb Sleeves



FOR COMPLETE INFO ABOUT EMBROIDERY, VISIT: WWW.RAMSHA.COM. CONTACT: 022-26111111. \*NOT AVAILABLE WITH NET.



#R-492



TOP- FOX GEORGETTE WITH HEAVY EMBROIDERY  
BOTTOM- DULL SANTOON  
DUPATTA - NET EMBROIDERY WITH FRILL

- Ⓟ DRY CLEAN ONLY.
- ✂ DO NOT USE ANY BLEACH OR STAIN REMOVING CHEMICAL.
- ☎ IRON THE FABRIC AT MODERATE TEMPERATURE.

