

The **STYLE**

The brightest shade of blue to beat every blue in your wardrobe, the unusual tie-dye effect is the hero.



42203
FABRIC:
SILK SATIN CREPE





The perfect
DRESSER

Dress like you're takink a walk in a perfectly charming meadows looking like an abolute diva



42204
FABRIC:
SHIK SATIN CREPE



THE *Femme*
FACTOR
A feminine take on the combination of light
weight fabric, and red and yellow color.

42208
FABRIC:
DOLLA SILK

THE *Wild* WANDERER An earthy and animal inspired print adorned with a unique fabric ornamentation.



42205
FABRIC:
SHR SATIN CREPE



The **TREND SETTER**
A handloom style diagonal line print is trending high and low!





Winner
THE VIBRANT

A tie - and - dye effect crocheted saree print for a fresh appearance



42213
FABRIC:
CREPE GEORGETTE



The FLORAL NUMBER
Earthy florals in a subtle shade of ochre and brown is a perfect style for the statement making minimalist.



42201
FABRIC:
SILK SATIN CREPE

THE *Wild* WANDERER An earthy and animal inspired print adorned with a unique fabric ornamentation.



42205
FABRIC:
SHR SATIN CREPE

The
MOOD MAKER

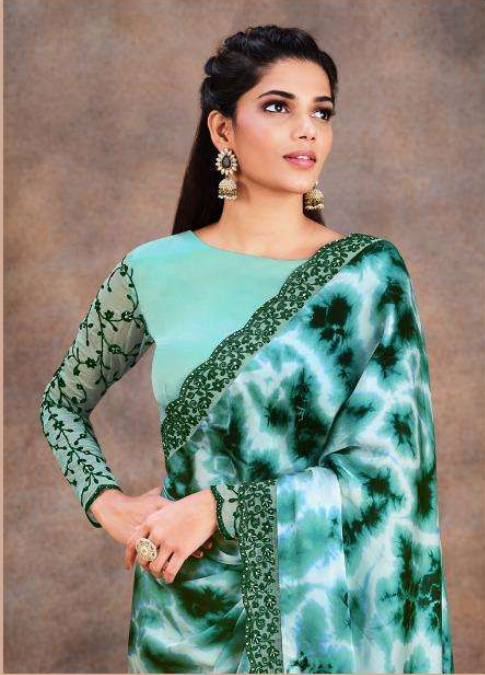
Setting the perfect mood for an evening soiree in this digital printed abstract design.



42209
FABRIC:
SILK SATIN CREPE

The **STYLE**

The brightest shade of blue to beat every blue in your wardrobe, the unusual tie-dye effect is the hero.



42203
FABRIC:
SILK SATIN CREPE

The HEAD TURNER

The abstractness of the print, the bright hues and the ornamentation, this one's ready to steal the spotlight.



42202
FABRIC:
CREPE GEORGETTE



THE GOLDEN
Summer

A trending tie-dye effect in sunshine red hue with the perfect hint of sequined shimmer



42206
FABRIC:
SILK SATIN CREPE



The simple SOBER

Careful and sophisticated, this print saree in the most red and pink colors is appropriate for multiple occasions.



42211
FABRIC:
CREPE GEORGETTE