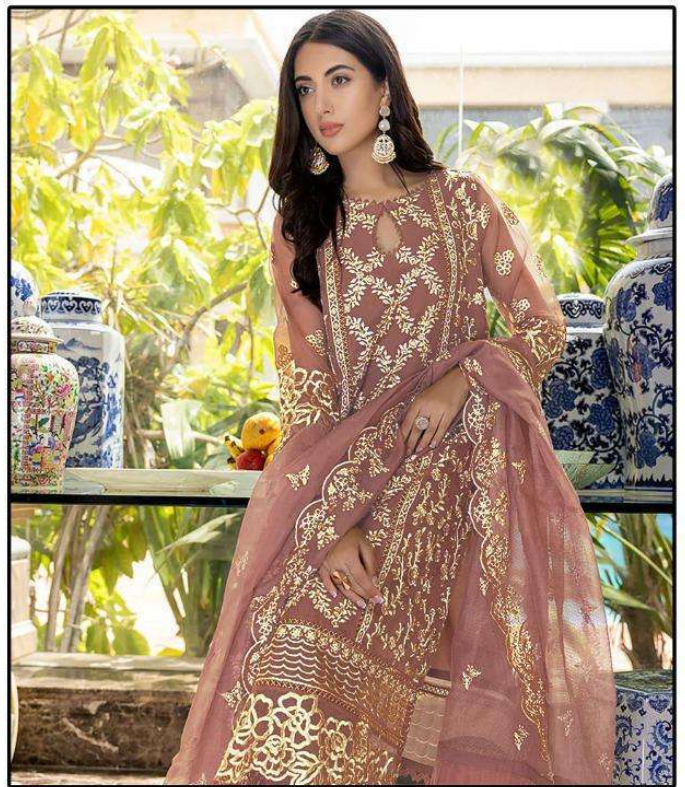


DS-147-C

Top- FOX GEORGETTE
Bottom/Iner- SANTOON
Dupatta- NAZMEEN EMBROIDERY WITH FRILL

WASHING INSTRUCTIONS
 DO NOT USE HOT TIPS. IF STAIN OR SPILL REMOVAL IS REQUIRED, USE THE COLD WATER AND GENTLE SOAP. DO NOT BLEACH OR DRY CLEAN. DO NOT USE IRON OR STEAM. DO NOT USE DRYER. DO NOT USE TUMBLER DRYER. DO NOT USE HANGING AND HANGING METHOD. DO NOT USE TUMBLER DRYER. DO NOT USE HANGING AND HANGING METHOD.



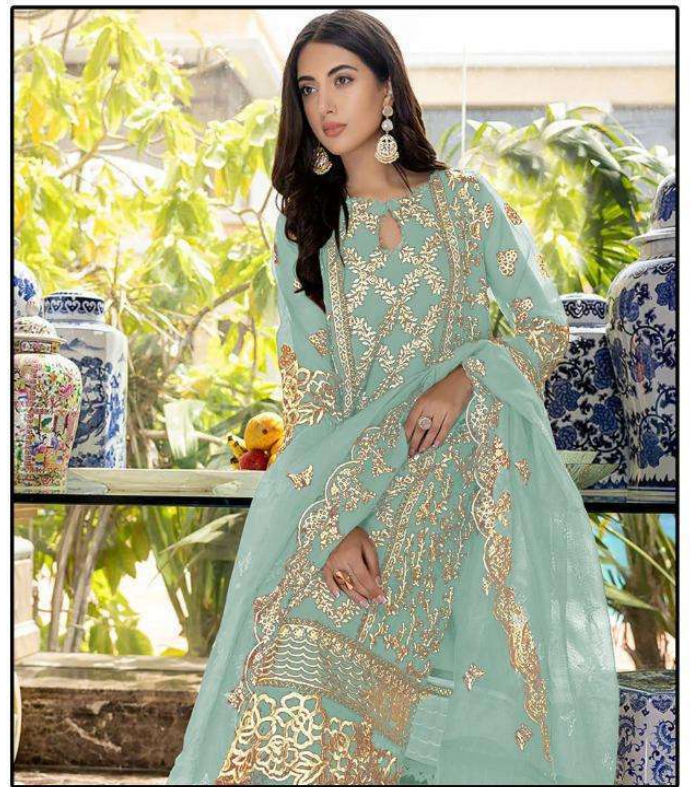
DS-147-C

Top- FOX GEORGETTE

Bottom/Iner- SANTOON

**Dupatta- NAZMEEN EMBROIDERY
WITH FRILL**

WASHING INSTRUCTIONS
 DO NOT USE HOT TIPS. IF STAIN OR SPILL REMOVED, DO NOT USE
 HOT IRON TO DRY. DO NOT USE DRY CLEANING. DO NOT USE BLEACH OR WATER
 ALL COMPONENTS SHOULD BE WASHED IN WATER
 DO NOT USE HOT IRON. IN TIPS FROM INSTRUCTIONS AND COPY MARKS
 WASH-DRYING AND WASH-DRYING
 REMOVING STAIN FROM TIPS FROM INSTRUCTIONS AND COPY MARKS
 EXTRA CARE AND INSTRUCTIONS ARE NOT INCLUDED



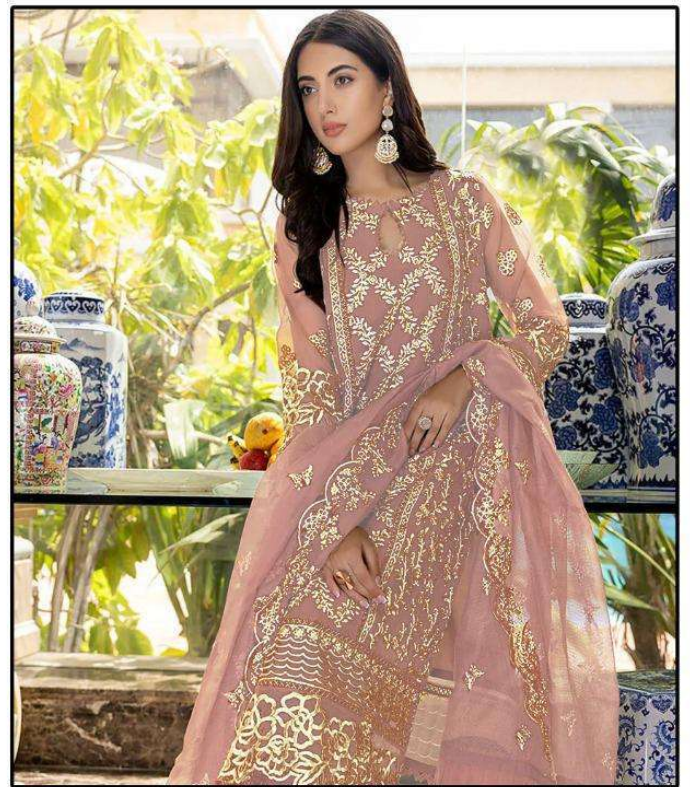
DS-147-D

Top- FOX GEORGETTE

Bottom/Iner- SANTOON

**Dupatta- NAZMEEN EMBROIDERY
WITH FRILL**

WASHING INSTRUCTIONS
 DO NOT USE HOT TIPS. IF STAIN OR SPILL REMOVED, DO NOT USE
 HOT WATER. DO NOT USE BLEACH. DO NOT USE IRON. DO NOT DRY IN SUN.
 ALL COMPONENTS SHOULD BE WASHED IN WATER.
 DO NOT USE DRYER. DO NOT USE TUMBLER DRYER.
 DO NOT USE STEAM. DO NOT USE PRESSURE WASHING.
 DO NOT USE DRY CLEANING. DO NOT USE CHEMICALS.
 DO NOT USE DRY CLEANING. DO NOT USE CHEMICALS.
 DO NOT USE DRY CLEANING. DO NOT USE CHEMICALS.



DS-147-A

Top- FOX GEORGETTE

Bottom/Iner- SANTOON

**Dupatta- NAZMEEN EMBROIDERY
WITH FRILL**

WASHING INSTRUCTIONS
 DO NOT USE HOT TIPS. IF STAIN OR SPILL REMOVAL IS REQUIRED,
 BEFORE DRYING AND CLEANING SHOULD BE WASHED IN WATER
 WITH COMFORT DIRECTION FOR FINISHES
 DO NOT USE BLEACH. IN TUBS FROM IN ORDER TO AVOID COLOR
 AND COLOR AND WASHING CAREFULLY
 REMOVING STAIN FROM TUBS AND DRYING IN DIRECT SUNLIGHT
 (IF YOU HAVE ANY QUESTIONS PLEASE CONTACT US)



**Top-
FOX GEORGETTE**

**Bottom/Iner-
SANTOON**

**Dupatta-
NAZMEEN EMBROIDERY
WITH FRILL**



DS-147-A



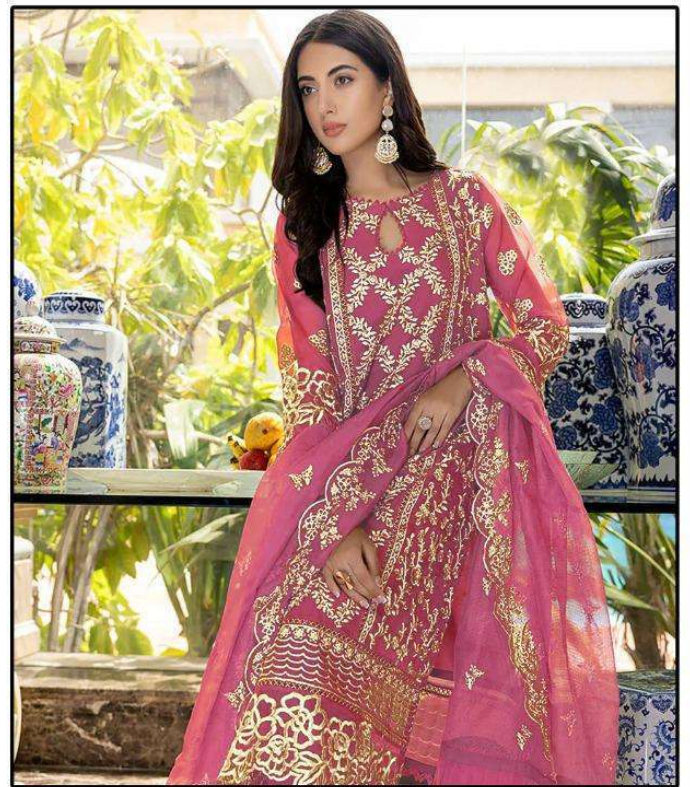
DS-147-B



DS-147-C



DS-147-D



DS-147-B

Top- FOX GEORGETTE

Bottom/Iner- SANTOON

**Dupatta- NAZMEEN EMBROIDERY
WITH FRILL**

WASHING INSTRUCTIONS
 DO NOT USE HOT TIPS. IF AVAILABLE, STAIN REMOVERS OR ENZYMES
 ARE NOT TO BE USED ON FABRIC. SHOULD BE WASHED IN WATER
 FULL. COMPARISON DIRECTIONS FOR FABRICS
 DO NOT USE BLEACH. IN PARTS FROM IN ORDER TO AVOID COLOR LOSS
 WASH IN COLD OR WARM WATER. DRY IN SHADE
 IRONING: IRON ON LOW TO MEDIUM TEMPERATURE. DO NOT USE DIRECT SUNLIGHT
 IF THE FABRIC IS DAMAGED AND REPAIRS ARE NOT INCLUDED