

MOHMANTHAN™
Royal

The new Muse Taranaah

Our highly acclaimed collection of ONE MINUTE SAREES under our brand MOHMANTHAN is a collection of ready to wear designs that are more than perfect if you're looking for a fuss free, glamorous and statement making attire this festive season.

COLORS



FABRICS

SATIN CREPE, SATIN SILK, LYCRA, CRUSH

WHEN TO WEAR?

COCKTAIL PARTIES, SANGEET NIGHTS, DIWALI PARTIES, WEDDINGS

HOW TO WEAR THIS SAREE



MOHMANTHAN™
Royal

The new Muse Taranaah

Our highly acclaimed collection of ONE MINUTE SAREES under our brand MOHMANTHAN is a collection of ready to wear designs that are more than perfect if you're looking for a fuss free, glamorous and statement making attire this festive season.

COLORS



FABRICS

SATIN CREPE, SATIN SILK, LYCRA, CRUSH

WHEN TO WEAR?

COCKTAIL PARTIES, SANGEET NIGHTS, DIWALI PARTIES, WEDDINGS

HOW TO WEAR THIS SAREE





THE DREAM ATTIRE

SLEEK, STYLISH AND OH-SO-BOLLYWOOD, THIS GREEN PRE-DRAPED SAREE WITH IT'S DESIGNER AND STATEMENT-MAKING BLOUSE IS A FESTIVE-DESIRE.



MOHMANTHAN™



22401

SILK CREPE WITH SWAROVSKI WORK



MOHMANZHAN™



"STYLE IS
SOMETHING
EACH OF
US ALREADY
HAS. ALL
WE NEED
TO DO IS
FIND IT."



**BRIGHT
BRILLIANT**

22405

SATIN SILK CREPE WITH SEQUINS AND MIRROR WORK



#TRENDINGNOW

In some cases, the fashions trends reflect the mood of the public in terms of popular clothes and accessories and in other cases, fashion trends impose the changes in the public sense. Fashion trends in the world are unpredictable and their transitory character, but what true or that particular fashion trend is in fall, weing no one is likely to predict that to end is soon to come. The awareness of designer houses is a clear manifestation of the demand that the society provides for exclusivity, continuously changing clothes styles.



MOHMAN THAN™



SATIN SILK WITH APPLIQUE THREADWORK



DELIGHT



FOILED STRIPES, CRUSHED DETAILS AND THE SURREAL SHADE OF BLACK -
A WINNING COMBINATION FOR YOUR DIVA-LIKE APPEARANCE

THE DESIGN

MOHMANZHAN™



22403

SATIN SILK WITH CRUSH DETAILS

MOHMAN THAN™



BEAUTIFUL



1MI
TE
FUSION SAREE

FEMINA

MOHMANTHAN™



Subtle and rich shade of pink with 3D floral embellished designer blouse and statement pallu for a swoon-worthy look.

MODERN PRINCESS

1 MINUTE
FUSION SAREE
22402

SATIN SILK WITH APPLIQUE THREADWORK



THING OF
Beauty
IS A JOY
FORVER -
JOHN KEATS



POISED - PRETTY - PLAYFUL

22406
LYCRA WITH APPLIQUE WORK

MOHMANTHAN™



NEW &
FABULOUS

Shine through the events like an absolute fashionista with glimmering sequins, unique shade of teal, touch of mirror work and that lacey-floral belt.



AESTHETICALLY
Indian.
TRULY
GLOBAL

MOHMANZHAN™



1
MINUTE
FUSION SAREE

22407

SATIN SILK CREPE WITH SHIBORI PRINT

MOHMAN THAN™



paint THE TOWN RED

Fantastic placement of 3D florals, gorgeously stylized blouse with striped sequins, truly yours!



22412

SATIN CREPE WITH APPLIQUE FLOWERS



WINE DIVINE
REFRESHING SHADE OF WINE AND FLORAL DETAILS



MOHMAN THAN™



GAME OF GLORY

A saree with a unique blend of phenomenal color, self-shining fabric and designer combination of floral and striped embroidered embellishments.

A WOMAN WITH CLASS IS TIMELESS.

1 MINUTE FUSION SAREE
22408

SATIN SILK CREPE WITH FLORAL EMBROIDERY



MOHMAN THAN™



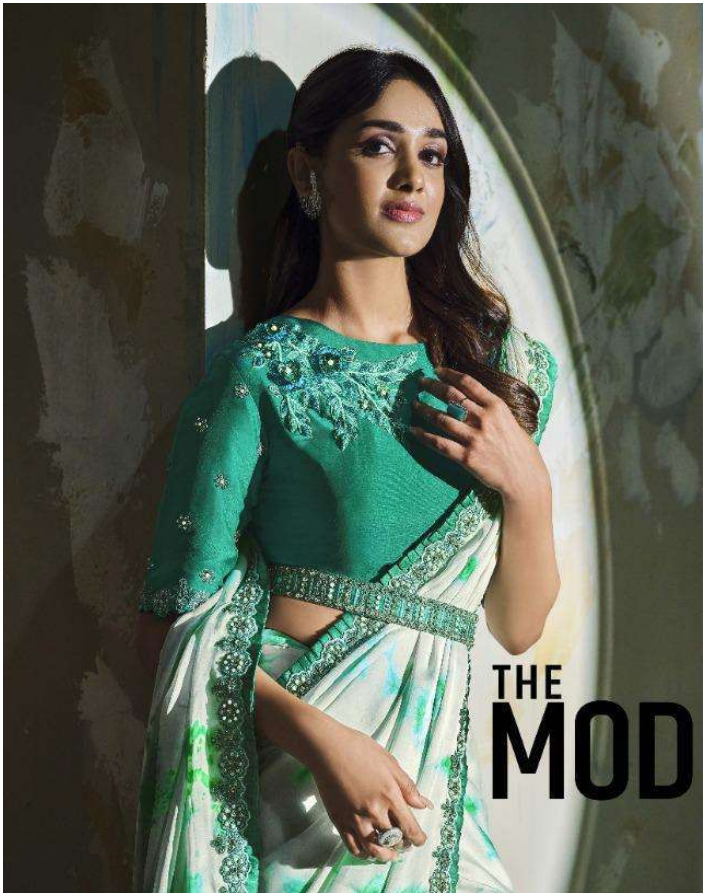
GLORIOUS & GLITTERY

FOR A YOUTHFUL .
GLAMOROUS AND
APPEAL LIKE A STAR.



1 MINUTE
FUSION SAREE
22411

LYCRA NET WITH SEQUINS WORK



THE
MODERN
SHIBORI

STYLIZING THE
AGE-OLD CRAFT
OF TIE AND DYE
WITH MODERN
ELEMENTS.



MOHMANTHAN™



1
MINUTE
FUSION SAREE
22410

SATIN SILK WITH SHIBORI PRINT AND HAND WORK



22401



22402



22403



22404



22409



22410



22411



22412



22405



22406



22407



22408



22413



22414

MOHMANTHAN™
Regal

Taranaah





DRESSED TO THE NINES

WITH METALLIC SHADE OF BLUE, CRUSHED PALLU AND SUBTLE BUT SHINING DESIGNER
BLOUSE - A COMBINATION TO TAKE YOU STYLISHLY THROUGH THE FESTIVITIES.

MOHMANZHAN™



22413

CRUSH SILK CREPE WITH SEQUINS WORK

MOHMANTHAN™

Royal



MAHOTSAV®
GROUP

Taraṅgaah

STYLE
IS A WAY TO SAY
WHO YOU ARE
WITHOUT HAVING TO
SPEAK



MOHMAN THAN™
Royal



PRICELESS

A four-style saree with butterfly, seered, embroidered, designer blouse.



22414

LYCRA WITH FLORAL EMBROIDERY



#TRENDINGNOW

In some cases the fashion trends reflect the mood of the public. In terms of popular clothes and accessories and in other cases fashion trends impose the changes in the public taste. Fashion trends in their essence pre-determine their transitory character. But when this or that particular fashion trend is in full swing no one is likely to predict that its end is soon to come. The abundance of designer houses is a clear manifestation of the demand that the society provides for exclusive continually changing clothes styles.



DELIGHT



FOILED STRIPES, CRUSHED DETAILS AND THE SURREAL SHADE OF BLACK -
A WINNING COMBINATION FOR YOUR DIVA-LIKE APPEARANCE

THE DESIGN
22403





"STYLE IS
SOMETHING
EACH OF
US ALREADY
HAS. ALL
WE NEED
TO DO IS
FIND IT."



**BRIGHT
BRILLIANT**

22405



WINE DIVINE
REFRESHING SHADE OF WINE AND FLORAL DETAILS



22408

GAME OF GLORY

A saree with a unique blend of phenomenal color, self-shining fabric and designer combination of floral and striped embroidered embellishments.

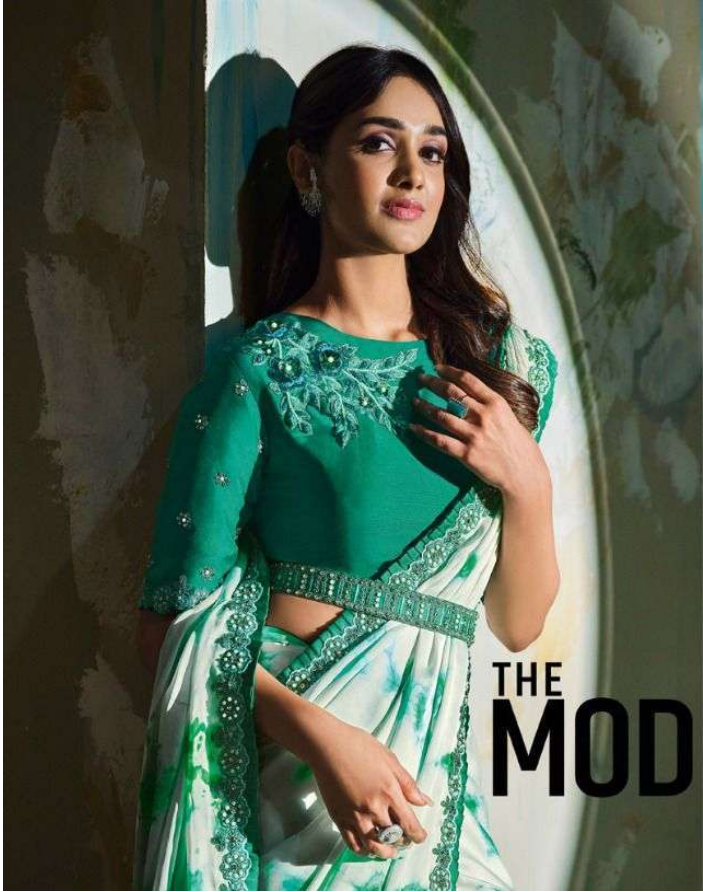
A WOMAN WITH CLASS IS TIMELESS.



AESTHETICALLY
Indian
TRULY
GLOBAL



22407



STYLIZING THE
AGE-OLD CRAFT
OF TIE AND DYE
WITH MODERN
ELEMENTS.

THE
MODERN
SHIBORI



22406

POISED - PRETTY - PLAYFUL

THING OF
Beauty
AS A JOY
FORVER -
JOHN KEATS



DESIGN NO	SAREE FABRIC	BLOUSE FABRIC	WORK	CUSTZ.(SEMISTITCH/UN-STITCH)	BLOUSE LENGTH
22401	Silk Crepe	Silk Crepe	Swarovski work , Stone work ,Sequence Work ,Tassel Work and Blouse Fully Sequins Work	Stitched Blouse	up to 36 Inch with margin of 02 inch
22402	Satin Silk	Satin Silk	3D floral embellished Blouse and thread work , Sequins work	Stitched Blouse	up to 36 Inch with margin of 02 inch
22403	Satin Silk	Satin Silk	Crush Details, Foiled Stripes,Sequins Blouse	Stitched Blouse	up to 36 Inch with margin of 02 inch
22404	Satin Silk Crepe	Satin Silk Crepe	Sequins Work,Solid saree	Stitched Blouse	up to 36 Inch with margin of 02 inch
22405	Satin Silk Crepe	Satin Silk Crepe	Mirror Work Blouse,Sequins	Stitched Blouse	up to 36 Inch with margin of 02 inch
22406	Lycra	Lycra	Applique Work,Floral Design Blouse,Embroidered	Stitched Blouse	up to 36 Inch with margin of 02 inch
22407	Satin Silk Crepe	Satin Silk Crepe	Shibori Print,Lace Work,Embroidered	Stitched Blouse	up to 36 Inch with margin of 02 inch
22408	Satin Silk Crepe	Satin Silk Crepe	Floral and Striped Embroidered Blouse with Embroidered Saree	Stitched Blouse	up to 36 Inch with margin of 02 inch
22409	Satin Silk Crepe	Satin Silk Crepe	Sequins Work and Swarovski Stone Work	Stitched Blouse	up to 36 Inch with margin of 02 inch
22410	Satin Silk	Satin Silk	Shibori Print and Hand work	Stitched Blouse	up to 36 Inch with margin of 02 inch
22411	Lycra Net	Lycra Net	Sequins Work, Embroidered	Stitched Blouse	up to 36 Inch with margin of 02 inch
22412	Satin Crepe	Satin Crepe	Applique Flower Work, Striped Sequins	Stitched Blouse	up to 36 Inch with margin of 02 inch
22413	Silk Crepe	Silk Crepe	Sequins Work,Embroidered Blouse and Saree Border	Stitched Blouse	up to 36 Inch with margin of 02 inch
22414	Lycra	Lycra	Floral Embroidered,Butterfly Sleeved Embroidered Blouse	Stitched Blouse	up to 36 Inch with margin of 02 inch

MAHOTSAV GROUP PRESENTS
MOHMANTHAN-Royal
"Taranaah"

DESIGN NO.	DESCRIPTION	PRICE
22401	READY TO WEAR SAREE	3555
22402	READY TO WEAR SAREE	2945
22403	READY TO WEAR SAREE	2625
22404	READY TO WEAR SAREE	3465
22405	READY TO WEAR SAREE	3295
22406	READY TO WEAR SAREE	2665
22407	READY TO WEAR SAREE	3155
22408	READY TO WEAR SAREE	3325
22409	READY TO WEAR SAREE	2945
22410	READY TO WEAR SAREE	2655
22411	READY TO WEAR SAREE	3455
22412	READY TO WEAR SAREE	2975
22413	READY TO WEAR SAREE	2895
22414	READY TO WEAR SAREE	2605

NOTE : GST@5% WILL BE CHARGED ON THE ABOVE PRICES.