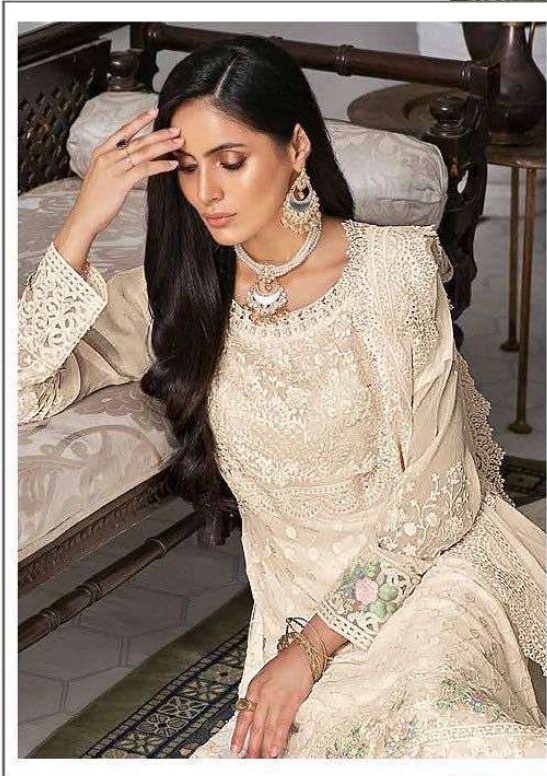


**Fepic®**

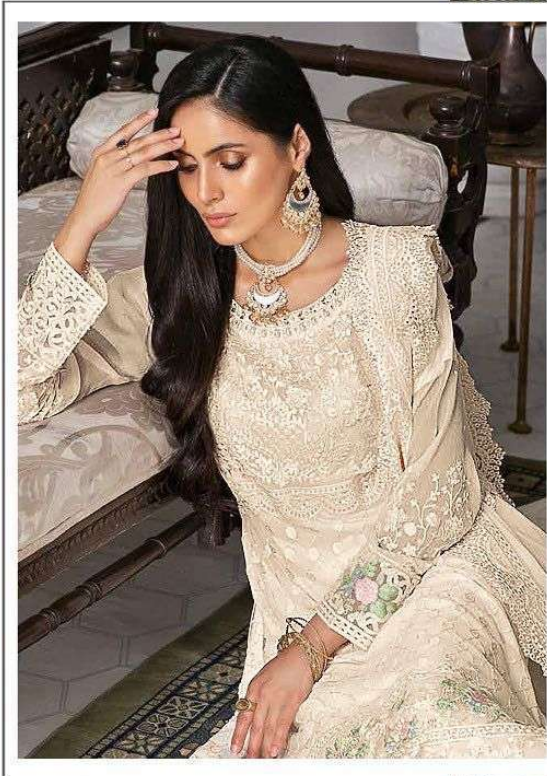


**WASHING INTRUCTIONS**

DO NOT USE ANY TYPE OF BLEACH OR STAIN REMOVING CHEMICALS  
BEFORE CUTTING / STITCHING, FABRIC SHOULD BE SOAKED IN WATER  
( ALL COMPONENTS SEPARATELY ) FOR 15 MINUTES  
DO NOT KEEP WET FABRIC IN TWISTED FROM IN ORDER TO AVOID COPY MARKS |  
WASH COLOURED AND WHITE FABRICS SEPARATELY  
IRON CLOTHES AT MODERATE TEMPERATURE | DO NOT DRY FABRIC IN DIRECT SUNLIGHT  
(EXTRA LACES, HANGINGS AND ACCESSORIES ARE NOT INDUED )

**C-1510 A**

**Fepic**<sup>®</sup>

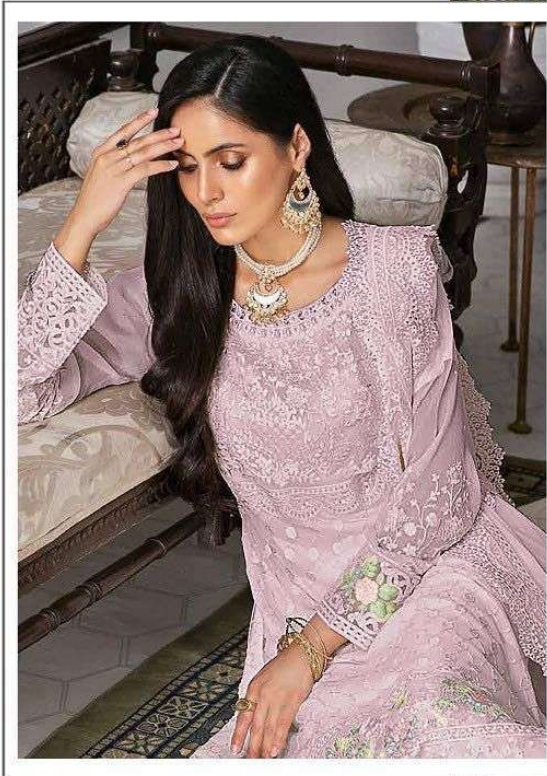


**WASHING INTRUCTIONS**

DO NOT USE ANY TYPE OF BLEACH OR STAIN REMOVING CHEMICALS  
BEFORE CUTTING / STITCHING. FABRIC SHOULD BE SOAKED IN WATER  
( ALL COMPONENTS SEPARATELY ) FOR 15 MINUTES  
DO NOT KEEP WET FABRIC IN TWISTED FROM IN ORDER TO AVOID COPY MARKS |  
WASH COLOURED AND WHITE FABRICS SEPARATELY  
IRON CLOTHES AT MODERATE TEMPERATURE | DO NOT DRY FABRIC IN DIRECT SUNLIGHT  
(EXTRA LACES, HANGINGS AND ACCESSORIES ARE NOT INDUED )

C-1510 A

**Fepic**<sup>®</sup>



**WASHING INTRUCTIONS**

DO NOT USE ANY TYPE OF BLEACH OR STAIN REMOVING CHEMICALS  
BEFORE CUTTING / STITCHING, FABRIC SHOULD BE SOAKED IN WATER  
( ALL COMPONENTS SEPARATELY ) FOR 15 MINUTES  
DO NOT KEEP WET FABRIC IN TWISTED FROM IN ORDER TO AVOID COPY MARKS |  
WASH COLOURED AND WHITE FABRICS SEPARATELY  
IRON CLOTHES AT MODERATE TEMPERATURE | DO NOT DRY FABRIC IN DIRECT SUNLIGHT  
(EXTRA LACES, HANGINGS AND ACCESSORIES ARE NOT INDUED )

**C-1510 B**

**Fepic®**



**WASHING INTRUCTIONS**

DO NOT USE ANY TYPE OF BLEACH OR STAIN REMOVING CHEMICALS  
BEFORE CUTTING / STITCHING. FABRIC SHOULD BE SOAKED IN WATER  
( ALL COMPONENTS SEPARATELY ) FOR 15 MINUTES  
DO NOT KEEP WET FABRIC IN TWISTED FROM IN ORDER TO AVOID COPY MARKS |  
WASH COLOURED AND WHITE FABRICS SEPARATELY  
IRON CLOTHES AT MODERATE TEMPERATURE | DO NOT DRY FABRIC IN DIRECT SUNLIGHT  
(EXTRA LACES, HANGINGS AND ACCESSORIES ARE NOT INDUED )

**C-1510 C**



**Fepic®**

**WASHING INSTRUCTIONS:**  
 WASH IN COLD WATER WITH LIKE COLORS. DO NOT BLEACH. DO NOT DRY IN SUNLIGHT. DO NOT IRON. DO NOT TUMBLE DRY. DO NOT CLEAN WITH SOLVENTS. DO NOT USE CHLORINE BLEACH. DO NOT USE DRY CLEANING. DO NOT USE STARCH. DO NOT USE GLAZE. DO NOT USE WAX. DO NOT USE POLISH. DO NOT USE OIL. DO NOT USE GREASE. DO NOT USE SOAP. DO NOT USE DETERGENT. DO NOT USE SOAP POWDER. DO NOT USE SOAP PASTES. DO NOT USE SOAP SOLUTIONS. DO NOT USE SOAP BLENDS. DO NOT USE SOAP MIXTURES. DO NOT USE SOAP COMBINATIONS. DO NOT USE SOAP MIXTURES. DO NOT USE SOAP COMBINATIONS. DO NOT USE SOAP MIXTURES. DO NOT USE SOAP COMBINATIONS.

**C-1510 C**

**Fepic®**

**WASHING INSTRUCTIONS:**  
 WASH IN COLD WATER WITH LIKE COLORS. DO NOT BLEACH. DO NOT DRY IN SUNLIGHT. DO NOT IRON. DO NOT TUMBLE DRY. DO NOT CLEAN WITH SOLVENTS. DO NOT USE CHLORINE BLEACH. DO NOT USE DRY CLEANING. DO NOT USE STARCH. DO NOT USE GLAZE. DO NOT USE WAX. DO NOT USE POLISH. DO NOT USE OIL. DO NOT USE GREASE. DO NOT USE SOAP. DO NOT USE DETERGENT. DO NOT USE SOAP POWDER. DO NOT USE SOAP PASTES. DO NOT USE SOAP SOLUTIONS. DO NOT USE SOAP BLENDS. DO NOT USE SOAP MIXTURES. DO NOT USE SOAP COMBINATIONS. DO NOT USE SOAP MIXTURES. DO NOT USE SOAP COMBINATIONS.

**C-1510 B**

**Fepic®**

**WASHING INSTRUCTIONS:**  
 WASH IN COLD WATER WITH LIKE COLORS. DO NOT BLEACH. DO NOT DRY IN SUNLIGHT. DO NOT IRON. DO NOT TUMBLE DRY. DO NOT CLEAN WITH SOLVENTS. DO NOT USE CHLORINE BLEACH. DO NOT USE DRY CLEANING. DO NOT USE STARCH. DO NOT USE GLAZE. DO NOT USE WAX. DO NOT USE POLISH. DO NOT USE OIL. DO NOT USE GREASE. DO NOT USE SOAP. DO NOT USE DETERGENT. DO NOT USE SOAP POWDER. DO NOT USE SOAP PASTES. DO NOT USE SOAP SOLUTIONS. DO NOT USE SOAP BLENDS. DO NOT USE SOAP MIXTURES. DO NOT USE SOAP COMBINATIONS. DO NOT USE SOAP MIXTURES. DO NOT USE SOAP COMBINATIONS.

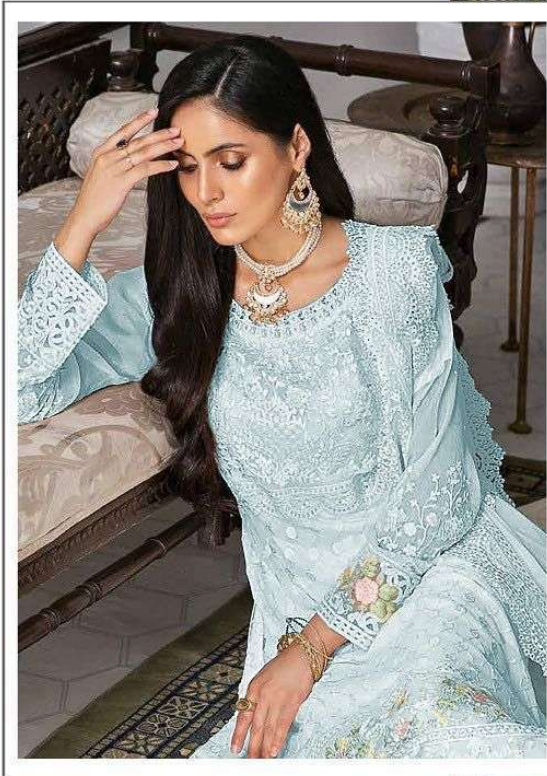
**C-1510 D**

**Fepic®**

**WASHING INSTRUCTIONS:**  
 WASH IN COLD WATER WITH LIKE COLORS. DO NOT BLEACH. DO NOT DRY IN SUNLIGHT. DO NOT IRON. DO NOT TUMBLE DRY. DO NOT CLEAN WITH SOLVENTS. DO NOT USE CHLORINE BLEACH. DO NOT USE DRY CLEANING. DO NOT USE STARCH. DO NOT USE GLAZE. DO NOT USE WAX. DO NOT USE POLISH. DO NOT USE OIL. DO NOT USE GREASE. DO NOT USE SOAP. DO NOT USE DETERGENT. DO NOT USE SOAP POWDER. DO NOT USE SOAP PASTES. DO NOT USE SOAP SOLUTIONS. DO NOT USE SOAP BLENDS. DO NOT USE SOAP MIXTURES. DO NOT USE SOAP COMBINATIONS. DO NOT USE SOAP MIXTURES. DO NOT USE SOAP COMBINATIONS.

**C-1510 A**

**Fepic®**



**WASHING INTRUCTIONS**

DO NOT USE ANY TYPE OF BLEACH OR STAIN REMOVING CHEMICALS  
BEFORE CUTTING / STITCHING, FABRIC SHOULD BE SOAKED IN WATER  
( ALL COMPONENTS SEPARATELY ) FOR 15 MINUTES  
DO NOT KEEP WET FABRIC IN TWISTED FROM IN ORDER TO AVOID COPY MARKS |  
WASH COLOURED AND WHITE FABRICS SEPARATELY  
IRON CLOTHES AT MODERATE TEMPERATURE | DO NOT DRY FABRIC IN DIRECT SUNLIGHT  
(EXTRA LACES, HANGINGS AND ACCESSORIES ARE NOT INDUED )

**C-1510 D**



