

**ROSE**  
**Primium Edition**

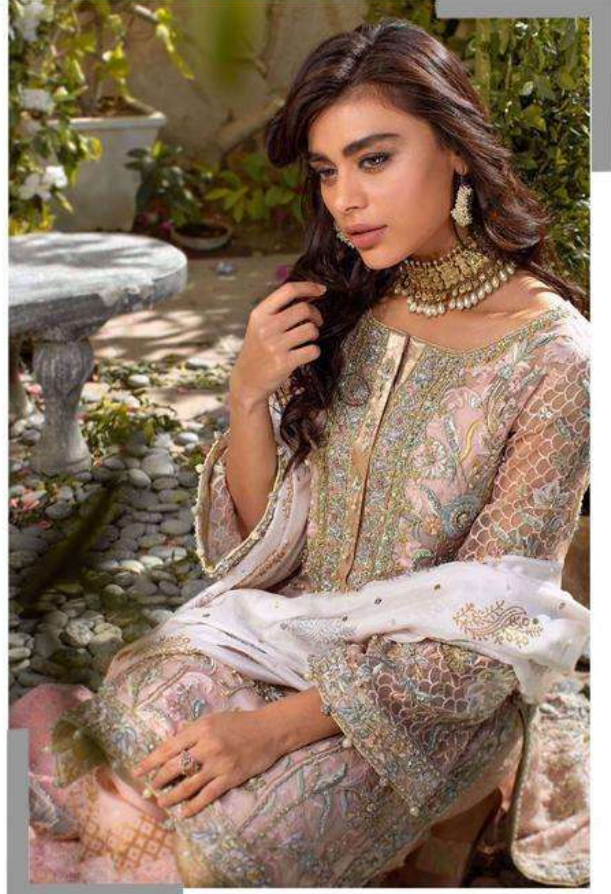
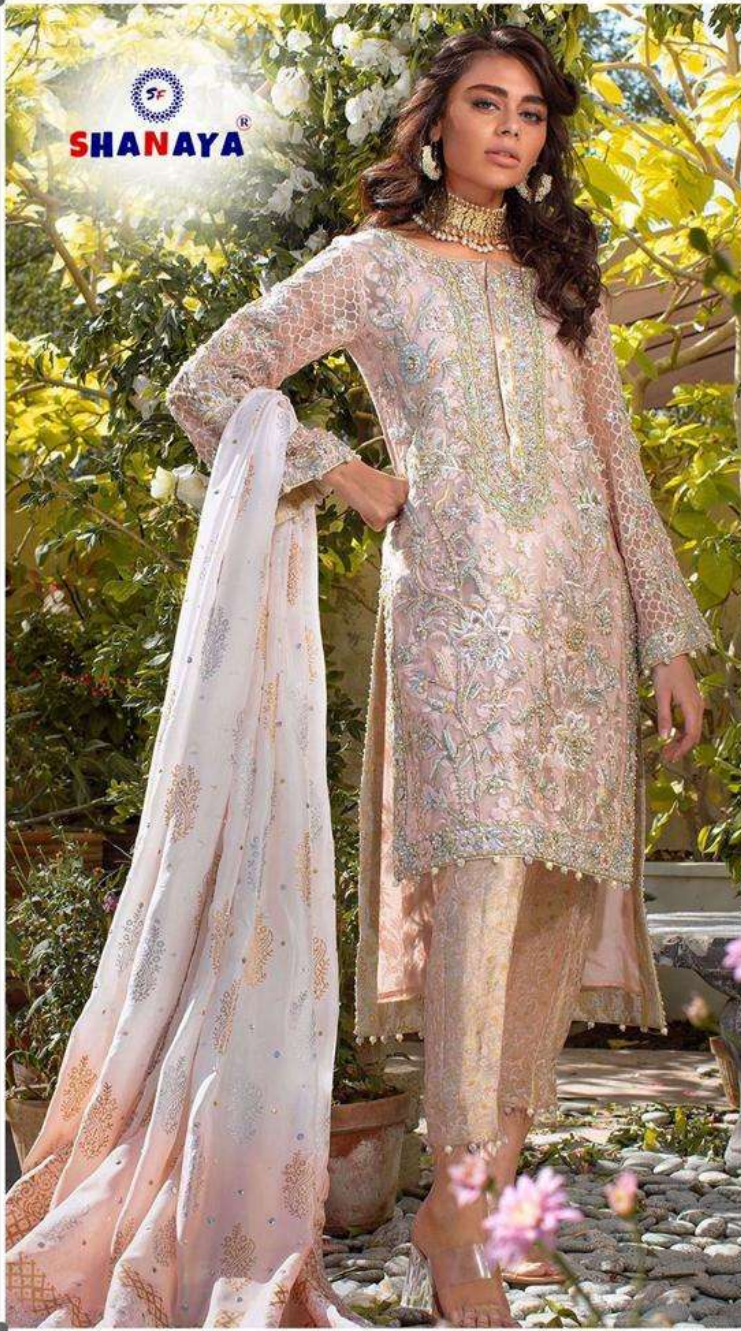
**S-110**



**WASHING INSRUCTIONS**

DO NOT USE TYPE OF BLEACH OR STAIN REMOVING CHEMICALS  
 BEFORE CUTTING / STITHING , FABRIC SHOULD BE SMOKED BE SOAKED IN WATER  
 ( ALL COMPONENTS SEPARATELY ) FOR 15 MINUTES  
 DO BOT KEEP WET FABRIC IN TWISTED FROM IN ORDER TO AVOID COPY MARKS |  
 IRON CLOTHES AT MODRATE TEMPERATURE | DO NOT DRY FABRIC IN DIRECT SUNLIGHT  
 ( EXTRA LACES, HANGINGSAND ACCESSORIES ARE NOT INDUDED )





**ROSE**  
**Primium Edition**

**S-110**



**WASHING INSRUCTIONS**

DO NOT USE TYPE OF BLEACH OR STAIN REMOVING CHEMICALS  
 BEFORE CUTTING / STITHING , FABRIC SHOULD BE SMOKED BE SOAKED IN WATER  
 ( ALL COMPONENTS SEPARATELY ) FOR 15 MINUTES  
 DO BOT KEEP WET FABRIC IN TWISTED FROM IN ORDER TO AVOID COPY MARKS |  
 IRON CLOTHES AT MODRATE TEMPERATURE | DO NOT DRY FABRIC IN DIRECT SUNLIGHT  
 ( EXTRA LACES, HANGINGSAND ACCESSORIES ARE NOT INDUDED )





**SHANAYA**

**ROSE**  
Premium Edition

**S-110**

SHANAYA  
100% COTTON  
MADE IN INDIA