





Design NO. (SKU)	Color	Lehenga Fabric	Choli Fabric	Dupatta Fabric	Size (Semi-Stitched)	Lehenga & Belt Work	Choli Work	Dupatta Work	Choli Length	Lehenga Length	Dupatta Length	Weight
	Lehenga – Choli – Dupatta								(UN-STITCHED) MTR	(SEMI-STITCHED) MTR	MTR	
2141	Teal Blue	Silk	Silk	NET	UPTO 42 BUST AND WAIST	Thread With Sequince Embroidered Work	Thread With Sequince Embroidered Work	Thread With Sequince Embroidered Work	1 MTR	42 INCH	2.40 MTR	2.5 KG
2142	White – Green – White	Silk	Silk	NET	UPTO 42 BUST AND WAIST	Thread With Sequince Embroidered Work	Thread With Sequince Embroidered Work	Thread With Sequince Embroidered Work	1 MTR	42 INCH	2.40 MTR	2.5 KG
2143	Violet	Silk	Silk	NET	UPTO 42 BUST AND WAIST	Thread With Sequince Embroidered Work	Thread With Sequince Embroidered Work	Thread With Sequince Embroidered Work	1 MTR	42 INCH	2.40 MTR	2.5 KG
2144	Peach	Silk	Silk	NET	UPTO 42 BUST AND WAIST	Thread With Sequince Embroidered Work	Thread With Sequince Embroidered Work	Thread With Sequince Embroidered Work	1 MTR	42 INCH	2.40 MTR	2.5 KG
2145	Deep Pink	Silk	Silk	NET	UPTO 42 BUST AND WAIST	Thread With Sequince Embroidered Work	Thread With Sequince Embroidered Work	Thread With Sequince Embroidered Work	1 MTR	42 INCH	2.40 MTR	2.5 KG
2146	White – Deep Pink	Silk	Silk	Silk	UPTO 42 BUST AND WAIST	Thread With Sequince Embroidered Work	Thread With Sequince Embroidered Work	Thread With Sequince Embroidered Work	1 MTR	42 INCH	2.40 MTR	2.5 KG
2147	Dusty – Purple	Silk	Silk	Silk	UPTO 42 BUST AND WAIST	Thread With Sequince Embroidered Work	Thread With Sequince Embroidered Work	Thread With Sequince Embroidered Work	1 MTR	42 INCH	2.40 MTR	2.5 KG

THIS BOOK / CATALOGUE / LOGO / ARE PROTECTED UNDER COPYRIGHT ACT.

AN INLEGAL/UNAUTHORIZED REPRINT, PUBLISHING, REPRODUCTION, DISTRIBUTION AND MODIFICATION OF ANY IMAGES, PHOTOGRAPHS AND PRODUCTCS, TOTALLY OR IN PART, FOR ANY PURPOSE, REASON OR CAUSE IS STRICTLY PROHIBITED AND PUNISHABLE UNDER LAW.





2141



2142



2145



2146



2143

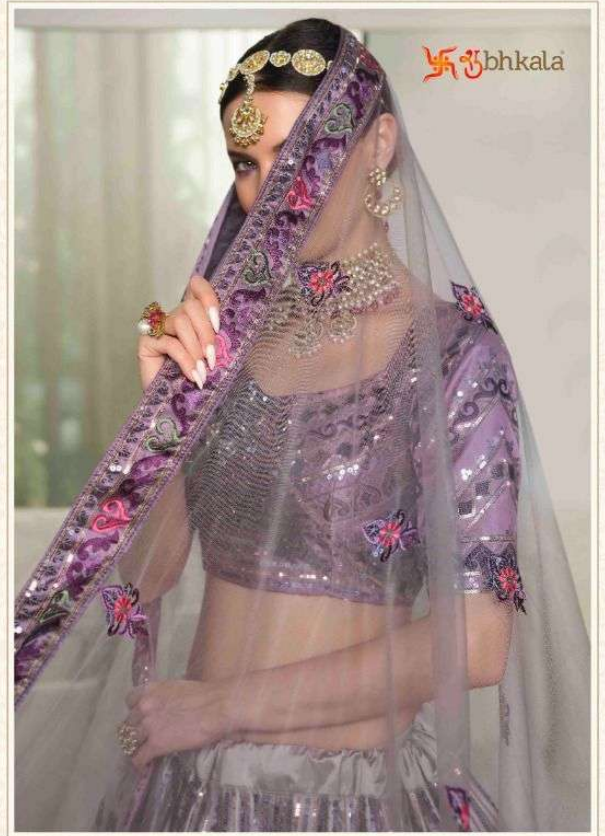


2144



2147









❧ bhkala



2142

A burst of fresh air comes alive in the form of this
green ensemble, while the intricate hand-woven
embroidery brings to life the glory and historical
legacy of the miniature paintings.





Ubhkala



2145

Enough to fill the eyes of the beholder
yet revealing the fabric. The motifs in
one of our lehengas become
three - depending on coloring
and shimmering sheen the entire
palette and the subtle work.

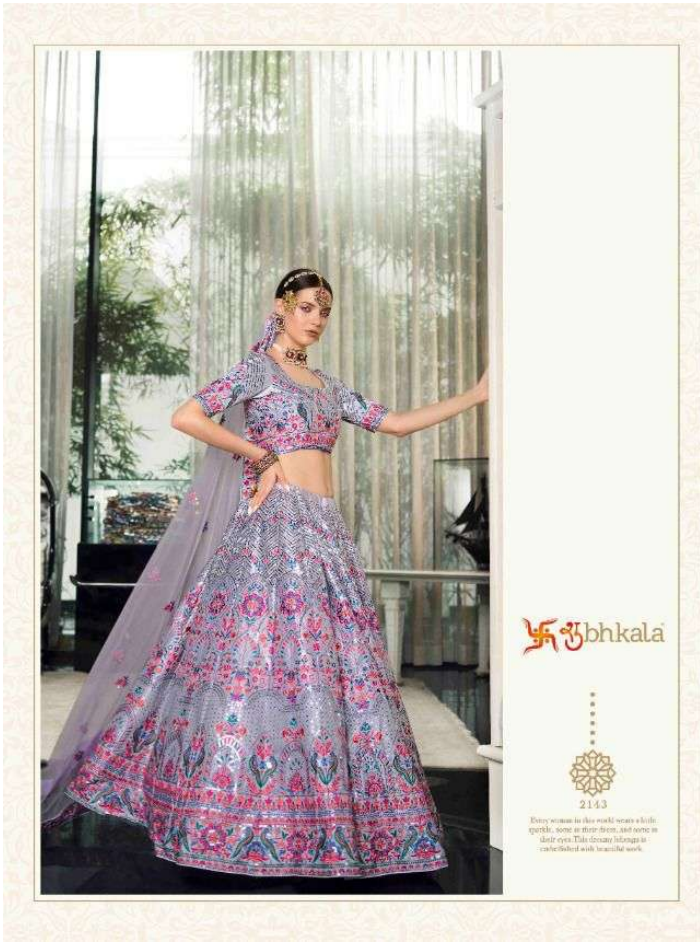


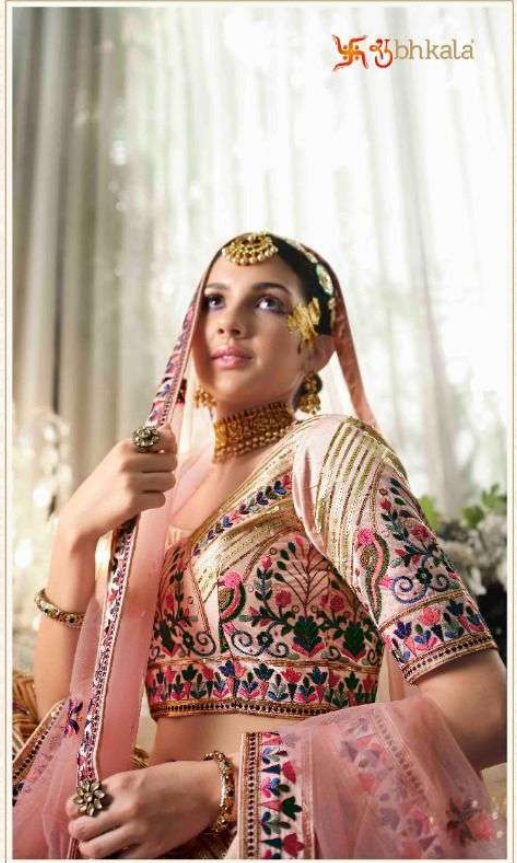
शुभकला

White and pink with a contrasting of delicate floral motifs - it is just the right combination for a big wedding. It adds to the vibrant mood, making you the bride of the day.



2146



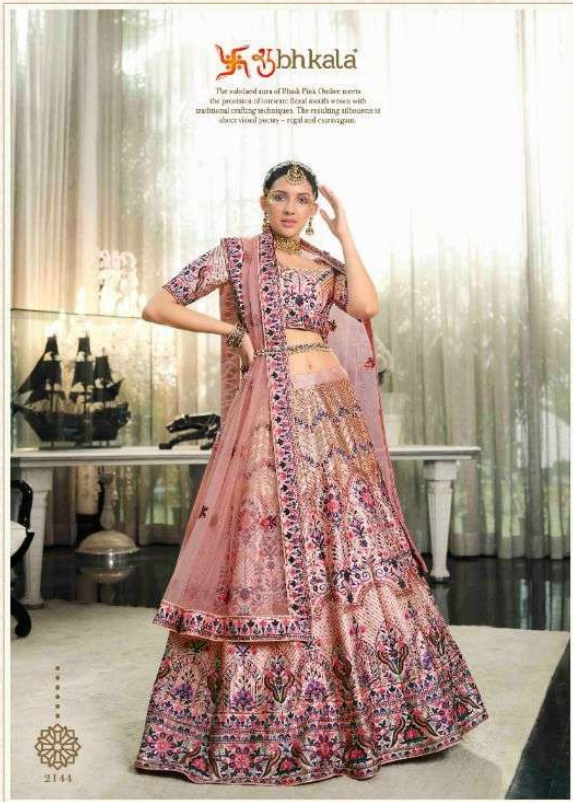


Swabhkala



2144

The intricate work of Swati Kulkarni
Chitra from the collection of
Sangeeta from Swati Kulkarni
with traditional embroidery techniques
The wedding collection is their shared
passion - *preeti aur aashirvachan*.





ॐ bhkala

Every woman in this world owns a little sparkle, some in their dress, and some in their eyes. This dreamy collection is embellished with beautiful work.



2143

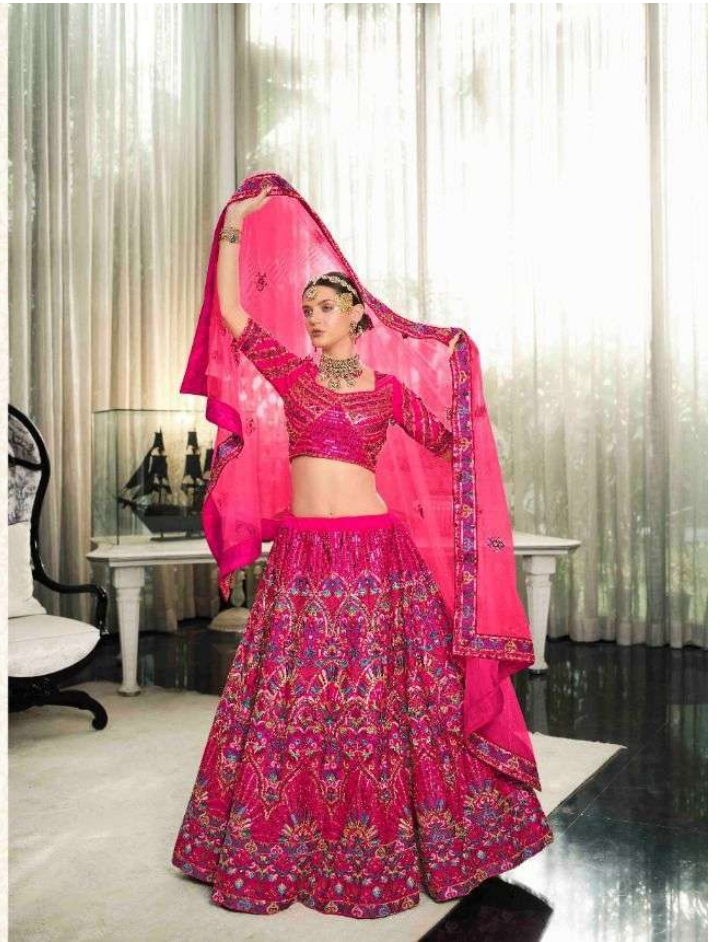


ॐ bhkala



2145

Thought to fall by ways of the Indian art
tradition. Hence, there exists a sense of our
heritage because there's a traditional
aesthetics and the way of the
color palette and the style work!





❧ bhkala



2141

This royal blue ensemble traces the embroidery of Indian colors entwined with the royal adornment
Artistically executed classical embroidery makes it really unique.





ॐ bhkala



2142

A brand of truth we create along the lines of our great ancestors, while the integrity of our work is a testimony
long to tell the glory and cultural history of our ancient garments.

