

It was always considered a privilege to be invited
to attend the weekly Bhakti sangh. The idea was to let the
best of the mind and heart be seen in a Bhakti sangh.
The collection of poems were not just
the right words of love.

ॐ bhkala







ॐ bhkala



The royal like ensemble to suit the exuberance of Indian culture goes with the royal adornment. An ornately embroidered ethnic embroidery adds a royal touch.





शुभकला



2142

A burst of fresh air comes alive in the form of this green ensemble, while the intricate handiwork embroidery brings to life the glory and cultural memory of the miniature paintings.





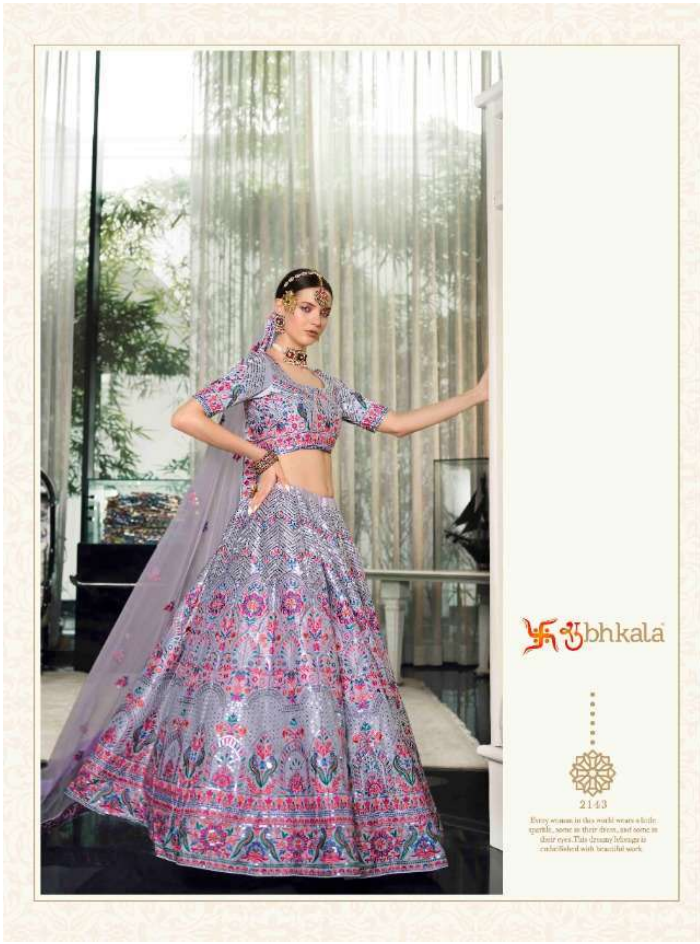
ॐ bhkala



2142

A hint of drishya comes alive in the form of this golden-silk lehenga, which the intricately handwoven embroidery brings to life in glory and modest mastery of our traditional patterns.





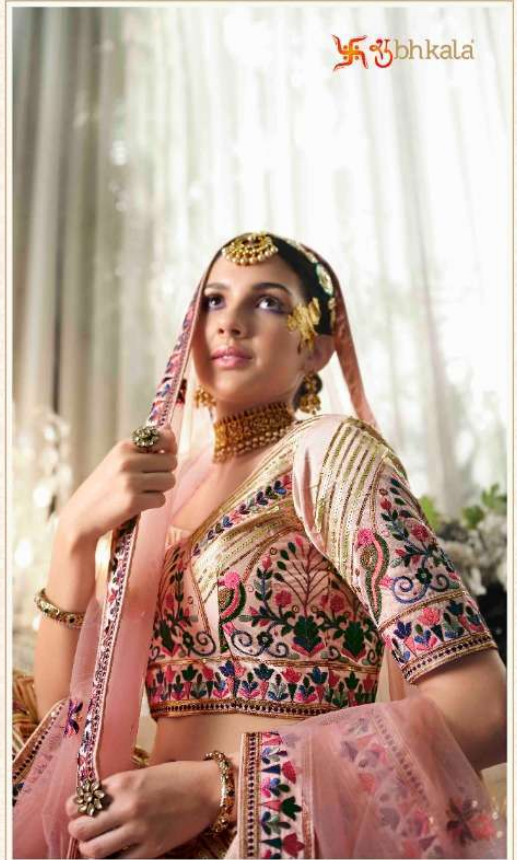


ॐ bhkala

Pretty women in this world seem a little sparkie, some in their dress, and some in their eyes. The dreamy beings are embellished with beautiful work.



2143



Swabhkala



2144
The subtle art of the P.K. Chatterjee is the precision of intricate hand-woven sarees with traditional and contemporary motifs. The resulting silhouettes are a blend of poetry – elegant and sophisticated.

Swabhkala

The cultural arts of Bhaskar Pink Choker were the product of intricate, local motifs woven with traditional crafting techniques. The resulting silhouette is a story of power, regal and elegance.



2144





ॐ bhkala



2145

Thought to fill the eyes of the bride, you
thoughtful bride. This is the story of our
bride's journey. It's a journey to
a place where the heart is the
center point and the world is the
stage.





सुककला



2145

Enough to fill the eyes of the beholder
yet breathable fabric. This outfit is
one of our favorites because
there's something so exciting
and liberating about the vibrant
palette and the subtle work!



ॐ bhkala

White and pink with a scattering of delicate floral motifs - it's just the right combination for a big wedding. It adds to the richness of pink, without going over the top!



2146









2141



2142



2145



2146



2143



2144



2147

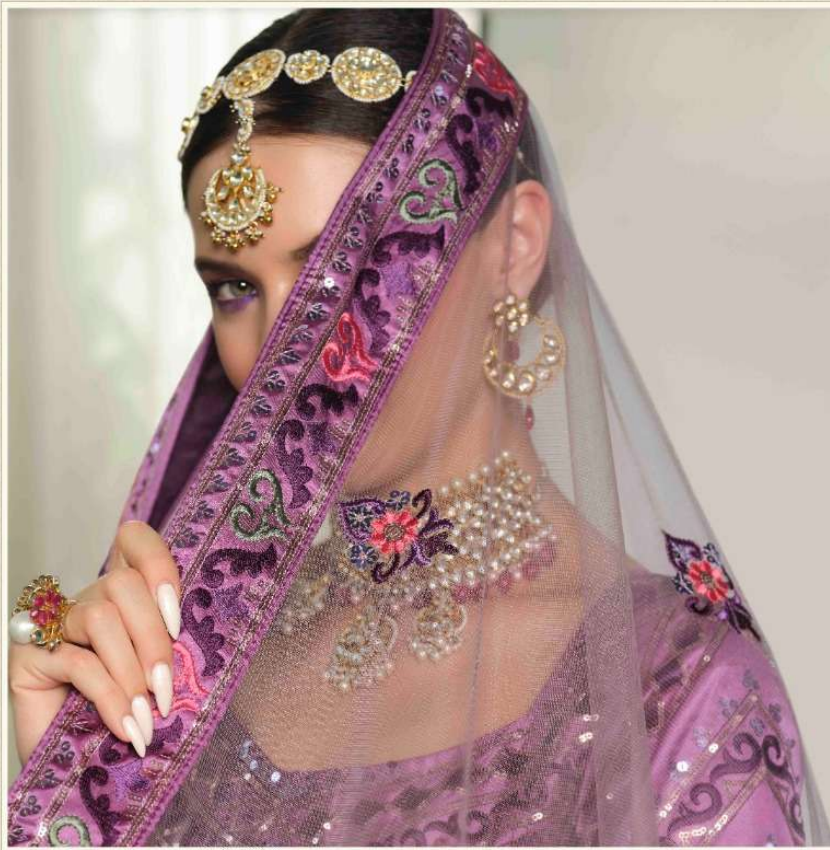




Design NO. (SKU)	Color	Lehenga Fabric	Choli Fabric	Dupatta Fabric	Size (Semi-Stitched)	Lehenga & Belt Work	Choli Work	Dupatta Work	Choli Length	Lehenga Length	Dupatta Length	Weight
	Lehenga – Choli – Dupatta								(UN-STITCHED) MTR	(SEMI-STITCHED) MTR	MTR	
2141	Teal Blue	Silk	Silk	NET	UPTO 42 BUST AND WAIST	Thread With Sequince Embroidered Work	Thread With Sequince Embroidered Work	Thread With Sequince Embroidered Work	1 MTR	42 INCH	2.40 MTR	2.5 KG
2142	White – Green – White	Silk	Silk	NET	UPTO 42 BUST AND WAIST	Thread With Sequince Embroidered Work	Thread With Sequince Embroidered Work	Thread With Sequince Embroidered Work	1 MTR	42 INCH	2.40 MTR	2.5 KG
2143	Violet	Silk	Silk	NET	UPTO 42 BUST AND WAIST	Thread With Sequince Embroidered Work	Thread With Sequince Embroidered Work	Thread With Sequince Embroidered Work	1 MTR	42 INCH	2.40 MTR	2.5 KG
2144	Peach	Silk	Silk	NET	UPTO 42 BUST AND WAIST	Thread With Sequince Embroidered Work	Thread With Sequince Embroidered Work	Thread With Sequince Embroidered Work	1 MTR	42 INCH	2.40 MTR	2.5 KG
2145	Deep Pink	Silk	Silk	NET	UPTO 42 BUST AND WAIST	Thread With Sequince Embroidered Work	Thread With Sequince Embroidered Work	Thread With Sequince Embroidered Work	1 MTR	42 INCH	2.40 MTR	2.5 KG
2146	White – Deep Pink	Silk	Silk	Silk	UPTO 42 BUST AND WAIST	Thread With Sequince Embroidered Work	Thread With Sequince Embroidered Work	Thread With Sequince Embroidered Work	1 MTR	42 INCH	2.40 MTR	2.5 KG
2147	Dusty – Purple	Silk	Silk	Silk	UPTO 42 BUST AND WAIST	Thread With Sequince Embroidered Work	Thread With Sequince Embroidered Work	Thread With Sequince Embroidered Work	1 MTR	42 INCH	2.40 MTR	2.5 KG

THIS BOOK / CATALOGUE / LOGO / ARE PROTECTED UNDER COPYRIGHT ACT.

AN INLEGAL/UNAUTHORIZED REPRINT, PUBLISHING, REPRODUCTION, DISTRIBUTION AND MODIFICATION OF ANY IMAGES, PHOTOGRAPHS AND PRODUCTCS, TOTALLY OR IN PART, FOR ANY PURPOSE, REASON OR CAUSE IS STRICTLY PROHIBITED AND PUNISHABLE UNDER LAW.



It was always considered a luxury to have a sari with intricate embroidery. The art of embroidery has been passed down through generations, and it is a beautiful way to preserve the rich heritage of our country.

शुभकला bhkala



शुभकला



THIS BOOK / CATALOGUE / LOGO / ARE PROTECTED UNDER COPYRIGHT ACT.
AN ILLEGA/UNAUTHORIZED REPRINT, PUBLISHING, REPRODUCTION, DISTRIBUTION AND
MODIFICATION OF ANY IMAGES, PHOTOGRAPHS AND PRODUCTS, TOTALLY OR IN PART,
FOR ANY PURPOSE, REASON OR CAUSE IS STRICTLY PROHIBITED AND PUNISHABLE UNDER LAW.

