

A woman with dark hair pulled back, wearing a vibrant pink and white striped sari with a gold border. She is adorned with traditional Indian jewelry, including a large gold necklace with a central medallion, a matching bracelet, and a ring. She is sitting on a white window ledge, leaning her head on her hand, looking directly at the camera. The background is a textured, light-colored wall with an arched window opening.

kimora<sup>©</sup>

A SENSE OF VERSATILITY AND  
AN EPITOME OF SERENITY

R · A · B · A · B

रबाब



A woman with dark hair pulled back, wearing a light green saree with a pink and white striped border. She is adorned with multiple necklaces, including a large gold pendant, a necklace with red and blue beads, and a gold bracelet. She is leaning her head on her right hand, resting her arm on a white window ledge. The background is a textured, light-colored wall with an arched window opening.

kimora<sup>©</sup>

A SENSE OF VERSATILITY AND  
AN EPITOME OF SERENITY

R · A · B · A · B

रबाब

**kimora®**

A SENSE OF VERSATILITY AND  
AN EPIHOME OF SERENITY







D. No. 2011



A SENSE OF VERSATILITY AND  
AN EPITOME OF SERENITY



D. No. 2012



A SENSE OF VERSATILITY AND  
AN EPILOGUE OF SERENITY

A SENSE OF VERSATILITY AND  
AN EPIHOME OF SERENITY







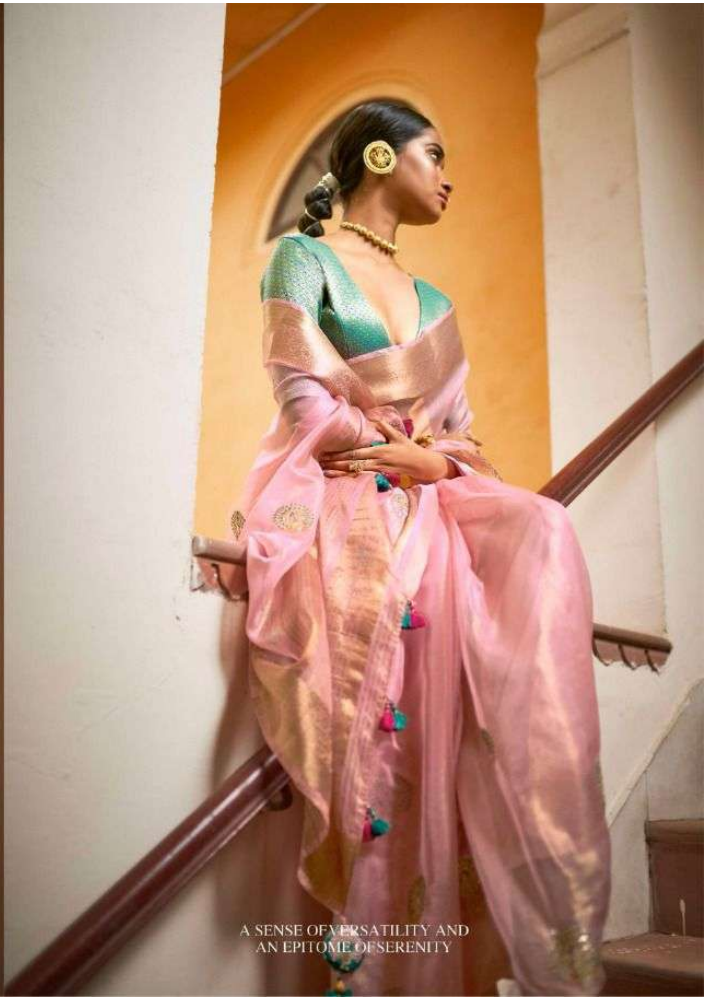
D. No. 2013



A SENSE OF VERSATILITY AND  
AN EPIHOME OF SERENITY



D. No. 2014



A SENSE OF VERSATILITY AND  
AN EPIHOME OF SERENITY



A SENSE OF VERSATILITY AND  
AN EPILOGUE OF SERENITY





D. No. 2015



A SENSE OF VERSATILITY AND  
AN EPIHOME OF SERENITY





D. No. 2011



D. No. 2012



D. No. 2013



D. No. 2014

**KIMORA**<sup>®</sup>

A SENSE OF VERSATILITY AND  
AN EPILOGUE OF SERENITY



D. No. 2015

**R·A·B·A·B**  
रबाब